

CONTROL TRANSFORMER

The transformers are designed for use in 24, 12 or 2.5 Volts AC control system, including air conditioning circuits, thermostats, gas valves, relays and/or other applications that do not exceed the listed ratings. It can be used to replace any transformers of same primary voltage and equal or smaller VA ratings.

INSTALLATION

- 1- Disconnect power supply before beginning installation to prevent electrical shock or equipment damage.
- 2- Transformer can be FOOT, PLATE or KNOCK-OUT (HUB) mounted.
 - * 20VA to 100VA-Foot Mount.
 - * 20VA to 60VA-PLATE or Knock-out Mount.
- 3- Connect Secondary Voltage.
Refer to Voltage color or terminal coding on transformer for proper wire combination. On terminal type transformer, be sure that no exposed wire can come in contact with any terminal.
- 4- Connect Primary Voltage.
Refer to voltage color coding on transformer for proper wire combination.
- 5- Tape all unused exposed wire separately to avoid a possible electrical short.
- 6- Check installation and reconnect power supply for proper operation.

PRIMARY VOLTAGE AC	LEAD COLORS	SECONDARY VOLTAGE AC	LEAD COLORS	TERMINALS
120V	BLACK + WHITE	24 VOLTS	BLU.+BRN.(WHT.)	A + B
208V	BLACK + RED	12 VOLTS	RED + WHT.	A + C
240V	BLACK + ORANGE	2.5 VOLTS	WHT. + ORG.	A + D
277V	BLACK + YELLOW	120 VOLTS	BLACK + WHT.	
440V	BLACK + BROWN			
480V	BLACK + GRAY			

COM = BLACK

A = WHITE

B = BLUE

C = RED

D = ORANGE

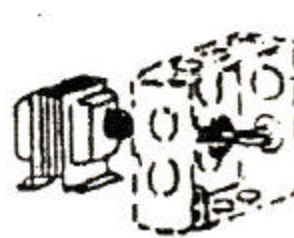
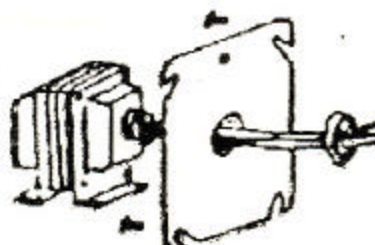
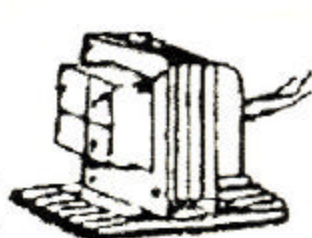
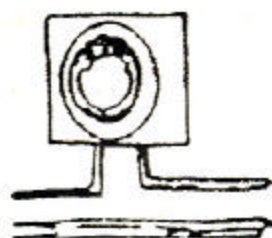


Fig. A

Foot Mount

Fig. B - Plate Mount

Fig. C - Knock-out Mount

(Hub Mount)