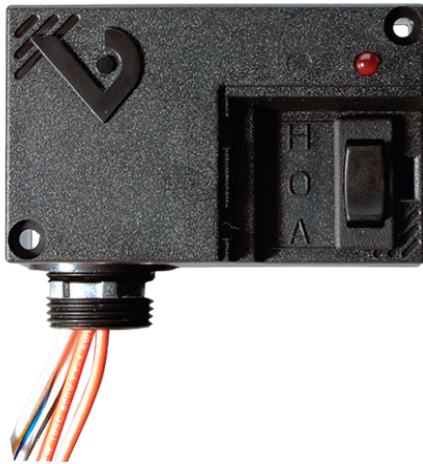


V101



DANGER

HAZARD OF ELECTRIC SHOCK, EXPLOSION, OR ARC FLASH

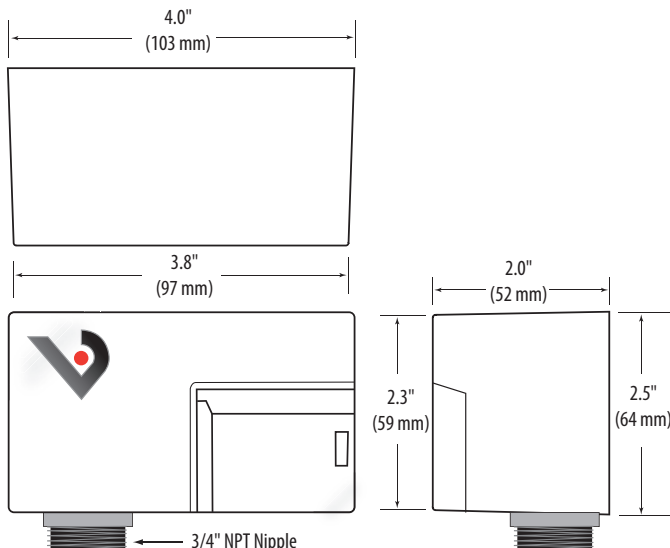
- Follow safe electrical work practices. See NFPA 70E in the USA, or applicable local codes.
 - This equipment must only be installed and serviced by qualified electrical personnel.
 - Read, understand and follow the instructions before installing this product.
 - Turn off all power supplying equipment before working on or inside the equipment.
 - Use a properly rated voltage sensing device to confirm power is off.
- DO NOT DEPEND ON THIS PRODUCT FOR VOLTAGE INDICATION

Failure to follow these instructions will result in death or serious injury.

NOTICE

- This product is not intended for life or safety applications.
- Do not install this product in hazardous or classified locations.
- The installer is responsible for conformance to all applicable codes.
- Mount this product inside a suitable fire and electrical enclosure.

Dimensions



V101

10A SPST Enclosed Relay With HOA Switch

Installer's Specifications

Operating Temperature	-40 to 55 °C (-40 to 131 °F)
Operating Humidity	10 to 90% RH, non-condensing
Expected Relay Life	Electrical (@ rated current) 100,000 cycles; Mechanical (unpowered) 10,000,000 cycles
Relay Status	LED ON = Energized
Wire Specifications:	
Lead Length	14" (356 mm) min.
Gauge	UL1015; Coil: 18 AWG; Contacts: 16 AWG
Insulation Class	600 VAC RMS
Agency Approvals	UL508 enclosed device listing, Pollution Degree 2

Installation

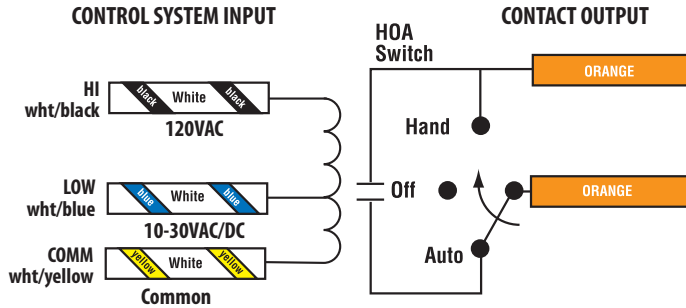
Disconnect and lock out all power sources before beginning the installation.

- Using the threaded nipple, connect the relay to the desired enclosure through a knock out hole.
 - Secure with the conduit nut provided.
 - Connect coil wires:
 - Choose the coil common lead (white with yellow stripe) and connect it to the common (-) source termination point.
 - Choose either the low voltage (10-30VAC/DC, white with blue stripe) or high voltage (120VAC, white with black stripe) lead, depending on the application requirements, and connect it to the (+) source termination point.*
- NOTE: When connecting the control side of this device (#18 wires) to power line circuits, provide current limiting at 7 amps max.
- Connect relay contacts:
 - Choose the two orange wires (N.O. contact) and connect to the switched load.

- Secure the enclosure and reconnect power.

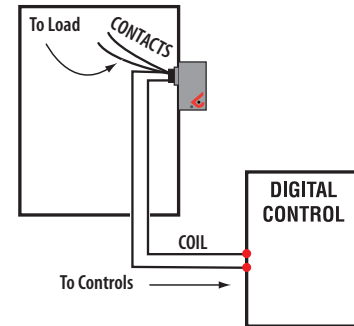
* Isolate or insulate all non-terminated wires according to local electrical code requirements, i.e. wire nut.

Wiring Color Codes



Wiring Example

Nipple mount directly to a panel

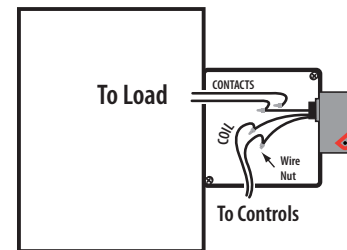


Contact and Coil Specifications

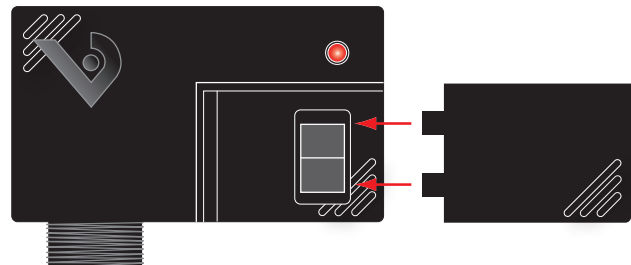
TYPICAL COIL PERFORMANCE			
Pull-in Voltage	AC	DC	
10-30V.....	8	10	
120V.....	58		
Drop-out Voltage	AC	DC	
10-30V.....	3	4	
120V.....	22		
Voltage	Coil Current		
	AC	DC	
10V.....	57mA	32mA	
12V.....	70mA	40mA	
24V.....	93mA	53mA	
30V.....	100mA	55mA	
120V.....	63mA	-	

CONTACT RATINGS	
SPDT Resistive.....	28VDC, 10A, N.O. 28VDC, 5A, N.C.
Motor.....	120VAC, 1/3HP, N.O. only

Nipple mount to a 2x or 4x electrical box



HOA Positions



- HAND** Up position: contacts are closed.
- OFF** Middle position: contacts are open.
- AUTO** Down position: control system actuates the contacts.