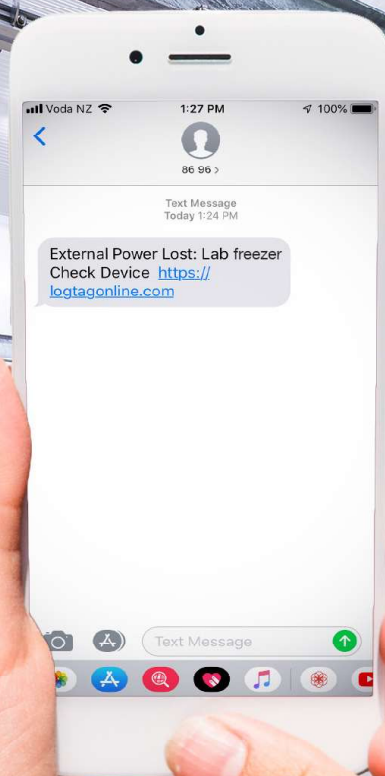


YOUR DATA, ANYWHERE, ANYTIME



UTREL30-WiFi

30 Day WiFi Low Temperature
Logger with Display

LogTag Recorders

1.888.610.7664

 www.calcort.com

sales@calcort.com

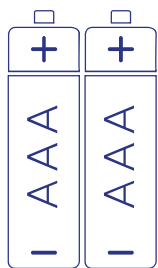


The LogTag® UTREL30-WiFi temperature data logger automatically uploads real-time temperature data to your LogTag® Online cloud account via your existing wireless network.

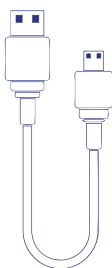
It features a large, easy-to-read display, along with many familiar attributes known from the LogTag® family of data loggers.

These include non-volatile memory for up to 16,129 temperature readings and a statistical memory, storing maximum and minimum reading as well as alarm duration for each of the last 30 days.

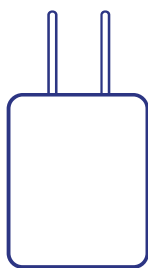
Accessories



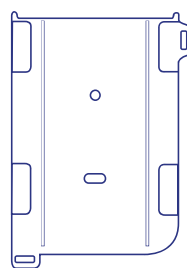
2x AAA Batteries
Not Included



USB Cable
Included



AC Adapter
Not Included



Wall Mount
Not Included



Buffer assembly
Not Included



External Probe
Not Included (Required).

ST10S Probes are available with a 0.5m, 1.5m or 3m cable
ST10M Probes are available with a 1.5m or 3m cable.
E.g. ST10M-15 for 1.5m or ST10M-30 for 3m cable.

Compatible probes below:

ST10S	22mm tip length, ø5mm (Not recommended for use with buffer)
ST10M	65mm tip length, ø5mm.
STX50	5 Meter extension cable for ST10/ST100 sensors.

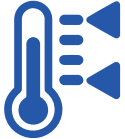
Features



Real-time data automatically uploaded via WiFi to the LogTag Online cloud.



Download data via LogTag Analyzer or as a PDF (no software required) when WiFi is unavailable.



Read current temperature and latest Min-Max temperature at a glance.



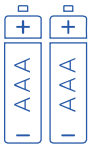
Check and reset Min-Max temperature reading at any time.



Audible alarm and flashing red LED signals a temperature alarm.



View alarm status for up to 30 days at a glance.



Can be powered by 2x AAA batteries (user replaceable) if not external powered.



Measure and store up to 16,000 readings – enough for 67 days at 6 minute logging.



Auto-pause function suspends alarm & statistic processing when the external sensor is unplugged.



Second battery backup via a coin cell to ensure no data is lost.

Applications



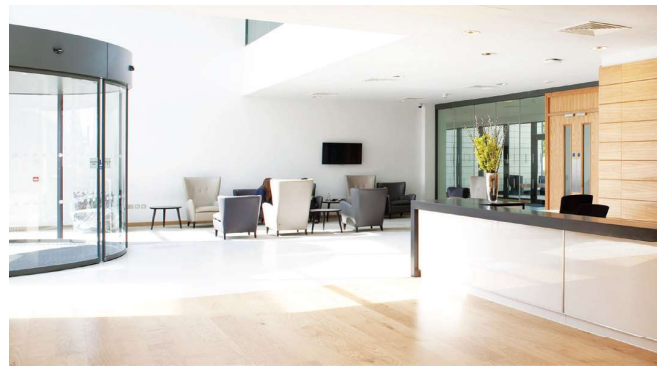
Vaccine & Pharmaceuticals



Industrial



Cold Storage



Clinic



Transportation



Refrigerated Containers

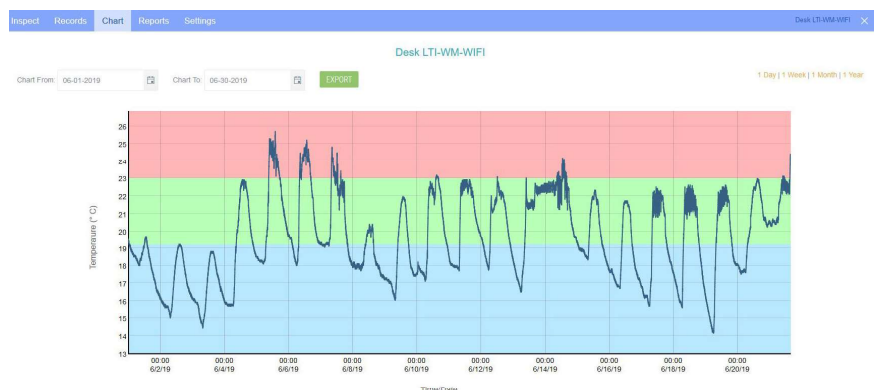
Specifications

Product Model	UTREL30-WiFi.
Sensor Measurement Range	-90°C to +40°C (-130°F to +104°F).
Operating Temperature Range	-30°C to +60°C (-22°F to +140°F).
Storage Temperature Range	0°C to +40°C (32°F to +104°F).
Rated Temperature Reading Resolution	0.1°C (0.2°F) for measurements -80°C to 10°C (-112°F to 50°F) 0.2°C (0.4°F) for measurements 10°C to 20°C (50°F to 68°F) and -90°C to -80°C (-130°F to -112°F) 0.3°C (0.5°F) for measurements 20°C to 30°C (68°F to 86°F) 0.5°C (0.9°F) for measurements 30°C to 40°C (86°F to 104°F) LogTag Analyzer® currently displays to one decimal place of °C or °F. The native resolution is what is stored in the LogTag®.
Rated Temperature Reading Accuracy	Better than ±0.5°C for -20°C to +10°C (-4°F to 50°F) Better than ±0.7°C for -50°C to -20°C (-58°F to -4°F) and +10°C to +30°C (50°F to 86°F) Better than ±1°C for -80°C to -50°C (-112°F to -58°F) and +30°C to +40°C (86°F to 104°F) Better than ±1.8°C for -90°C to -80°C (-130°F to -112°F)
Recording Capacity	16,129 temperature readings. 67 days at 6 minute logging. Day summary statistics memory (for display on LCD): up to 30 days of Min/Max/duration and alarm trigger statistics.
Sensor Reaction Time	Typically less than 2 minutes(T90) in moving air (1m/s) for ST10S type.
Sampling Interval	Configurable from 30 seconds to 18 hours.
Logging Start Options	Push button start (with configurable start delay from 1 minute to 72 hours) or specific date & time.
Download Time	Typically with full memory (16,129 readings) in less than 10 seconds.
Environmental	IP51 (when vertically mounted or hung with USB dust-cap in place).
Calibration	Factory calibrated using NIST equivalent reference equipment. Calibration certificate available on request.
Power Source	5V via micro USB socket or, 2 x 1.5V AAA batteries. CR2032 LiMnO ₂ coin cell (backup logging function only).
Battery Life	Device should normally be powered via USB. AAA batteries provide backup power for up to 2 months.
Connection Interface	USB 2.0 / Micro-USB plug.
WiFi	IEEE 802.11 / WPA/WPA2 security.
Size	141mm(H) x 72mm(W) x 18mm(T).
Weight	158g with AAA batteries. (134g - excluding probe and AAA batteries).
Case Material	Polycarbonate



Connection Software

Real-time data automatically uploaded via WiFi to the LogTag Online cloud.



Preliminary Revision E (111220) © Copyright 2020, LogTag Recorders Ltd
LogTag Recorders Ltd reserves the right to change this specification without notice.

1.888.610.7664



www.calcert.com

sales@calcert.com