



SCOUT

Handheld Thermal Night Vision Camera

1.888.610.7664

 www.calcert.com

sales@calcert.com

EXPERIENCE THE SCOUT ADVANTAGE

FLIR's Scout handheld thermal imaging cameras give hikers, hunters, and outdoorsmen of all stripes the ability to see clearly in total darkness, providing a wealth of valuable information during any nighttime excursion. Scout, powered by the same advanced technology used by military and law enforcement, is the first personal thermal imaging camera affordable enough to give every outdoorsman the unsurpassed practical advantages of full-resolution thermal imaging night vision.

Scout makes images from heat, not light, a feat impossible for the naked eye or even image intensified (I²) night vision devices, which means you can see clearly even without any visible light at all. People, animals, and objects all make their own heat and their own contrast, and are clearly seen by the Scout in even the most adverse conditions.

Scout enables the outdoorsman to:

- See animals and difficult terrain in reduced visibility and total darkness
- See through smoke, dust, and light fog
- See camouflage and foliage in any lighting conditions
- See more – and see farther – than with low-light night vision goggles

If you really love the great outdoors, why limit your world to only the daylight hours? Scout thermal imagers allow you to experience nature in vivid detail 24/7.

 FLIR

Without Scout

With Scout

HOW AND WHY THERMAL IMAGING WORKS

Daylight TV cameras, image intensified (I²) night vision devices, and the human eye all see the same thing: reflected visible light.

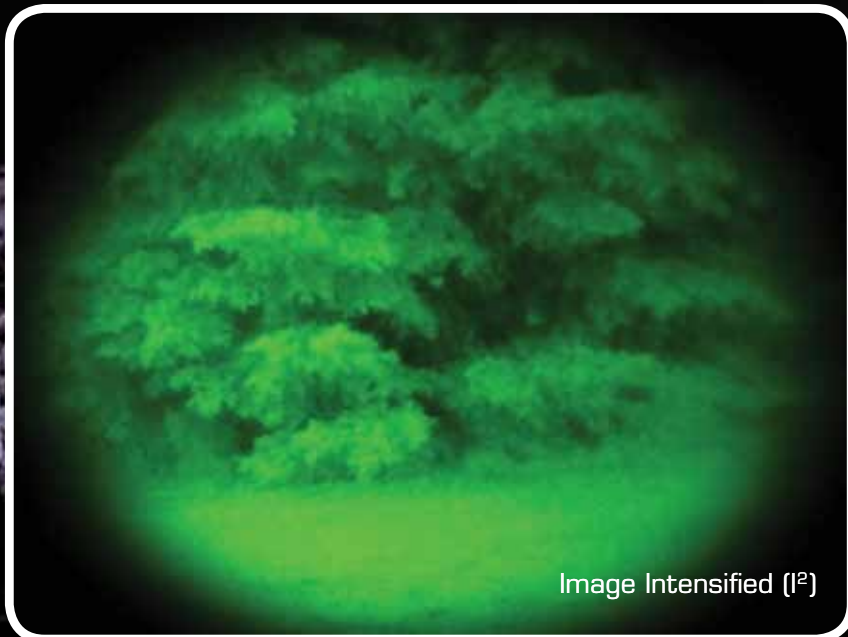
Unfortunately, we need visual contrast to discern an object from its surroundings and at night there is very little visual contrast to work with. Conventional night vision scopes are great for situational awareness, but they can't see in total darkness. Conventional night vision scopes also struggle to penetrate foliage or make a picture at great distances.

Scout thermal cameras don't have these problems since they make pictures from heat, rather than light.

Everything we encounter in day-to-day life gives off thermal energy, even ice. The hotter something is, the more thermal energy it emits. This emitted thermal energy is called a heat signature. When two objects next to one another have even subtly different heat signatures, they show up clearly to a thermal imager regardless of lighting conditions.

Using the 240 x 180 or higher resolution 320 x 240 thermal imaging core, the Scout series provides significantly better image clarity and greater detail than earlier systems, allowing the user to see more of their surroundings than any other night vision technology. FLIR's advanced image-processing algorithms produce crisp, clear thermal video day and night.

To learn more about the benefits of thermal imaging, visit www.flir.com.



SEE AT NIGHT AND STAY SAFE.

The FLIR Scout line of handheld thermal imaging cameras reveals a whole new world of outdoor adventure and can make the world a safer place for outdoor enthusiasts everywhere. Having a Scout in hand means that you can:

- See people – keep track of the rest of your hiking, hunting, or camping party in the darkest nights, and even when they're obscured by light foliage.
- See animals – everything gives off heat, so animals can't use their natural camouflage to hide from Scout. Discover, observe, or catalog those hard-to-spot animals you've always wanted or needed to see, day and night.
- Track game – hunters can use Scout to track wounded animals by following their heat signatures directly, or by detecting the signs they leave behind.
- Navigate – no more losing the trail at night or in bad visibility; with Scout, you'll be able to navigate just as well at night as you can during the day.
- Stay safe – Scout's thermal night vision technology lets you see clearly through smoke, dust, and light fog so you can stay safe in the outdoors when conditions deteriorate.
- See more, and see farther, than with other night vision technologies – because Scout sees clearly without any light whatsoever, it can see farther at night than other imaging technologies that need ambient light to work, and Scout can see heat sources that these other cameras could never find.

And your Scout isn't just for out on the trail—there are dozens of at-home, on-the-water, or on-the-go uses.

THE POWER OF THERMAL IMAGING IN THE PALM OF YOUR HAND

1. **Shuttered Eyepiece:** Keeps light from coming out of the viewfinder and avoids alarming animals or other target subjects.
2. **Multiple lens options available:** Choose the 19 mm lens with 24° field of view (and its optional 2x optical extender), or the longer-range 65 mm lens with 7° field of view for maximum viewing capability.
3. **Rugged design:** All-weather design is built to withstand the demands of day-in, day-out rugged outdoor use. It even floats!
4. **Hot Shoe Attachment:** The included "hot shoe" attachment provides power-in and RCA composite video-out connections while maintaining the camera's tripod mounting capability.
5. **SD Card Slot:** Allows for easy field upgrades and the storage of captured still images and video on the removable SD card.*
6. **USB2 Connection:** Permits rapid transfer of still images and video from the Scout to a PC.*
7. **Battery Compartment:** Four rechargeable AA NiMH batteries are good for more than five hours of continuous operation. Scout also runs on standard non-rechargeable alkaline and Lithium Ion AA batteries.



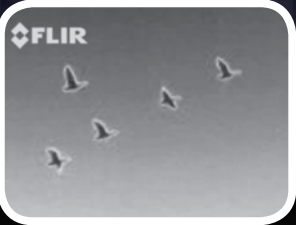
POWER: Virtual instant-on from Standby mode.

RECORD: Press/release the RECORD button once to capture/save images. Press/hold the RECORD button for more than 2 seconds to record video.*

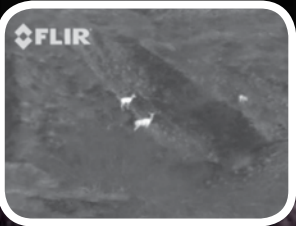
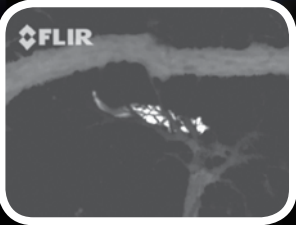
E-ZOOM: Cycles the 2x e-zoom on and off (if equipped).

BRIGHTNESS: Adjusts the brightness of eyepiece display.

POLARITY: Switches the display between Black Hot, White Hot and **Instalert™** modes. **Instalert** highlights specific temperature ranges with a red gradient color to simplify detection of animals, people, and objects.



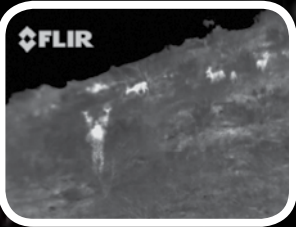
Black Hot



White Hot



Instalert™



* = Pro models only.

Scout



SCOUT MODEL SPECIFIC FEATURES

MODEL DESIGNATION	TS24	TS24 Pro	TS32	TS32 Pro	TS32r	TS32r Pro
Image Resolution	240 x 180		320 x 240		320 x 240	
Field of View - H x V	24° x 18°		24° x 18°		7° x 5°	
Field of View w/Optional 2X Extender - H x V	12° x 9°		12° x 9°		N/A	
Freeze Image on LCD display	TS24 only		TS32 only		TS32r only	
SD/SDHC Card enabled (up to 16Gb)	TS24 Pro only		TS32 Pro only		TS32r Pro only	
Still Image Storage on SD/SDHC Card	TS24 Pro only		TS32 Pro only		TS32r Pro only	
Video Storage (MPEG-4) on SD/SDHC Card	TS24 Pro only		TS32 Pro only		TS32r Pro only	
2x Digital E-Zoom	TS24 Pro only		Both models		Both models	
Diopter Adjustment + 2	Both models		Both models		Both models	
USB2 Port (for SW updates/upgrades)	Both models		Both models		Both models	
Weight incl. batteries (w/o 2X Extender)	1.59 lb (721 g)		1.59 lb (721 g)		2.17 lb (985 g)	
Size - L x W x H (w/o 2X Extender)	9.36" x 3.33" x 2.62" (256 x 84.5 x 66.5 mm)		9.36" x 3.33" x 2.62" (256 x 84.5 x 66.5 mm)		10.96" x 3.33" x 2.69" (278.5 x 84.5 x 68.4 mm)	
Operating Temp.	32°F to +122°F (0°C to +50°C)		-4°F to +140°F (-20°C to + 60°C)		-4°F to + 140°F (-20°C to + 60°C)	
Storage Temp.	-4°F to +158°F (-20°C to +70°C)		-40°F to +167°F (-40°C to +75°C)		-40°F to+167°F (-40°C to +75°C)	

COMMON FEATURES

Detector Type	Longwave Uncooled VOx Microbolometer
Video Output (9 Hz refresh rate)	NTSC or PAL composite video; Aux Video Outout available via RCA jack on detachable Hot Shoe
Built-In Viewfinder Display	Color VGA LCD with brightness control and on-screen symbology
Power Button	On / Off / Standby
Start up from stand-by	<1.5 seconds
Battery Type	4 AA NiMH Batteries (included); Li-Ion or Alkaline optional (not included)
Battery Life (Operating / Stand-By)	>5 Hours / ~120 Hours (on included NiMH batteries)
Battery Recharging	Detachable Hot Shoe Charging Port for AC Power Adapter/Charger -or- Car adapter/Charger (both chargers and Hot Shoe included)
Polarity / Detection Palettes	Selectable Black Hot, White Hot or FLIR "Instalnet"; FLIR Proprietary Digital Detail Enhancement
Rating / Environmental	IP-67, Submersible, 1 m drop
Fixed Use	Standard tripod mount
Standard Warranty	2 Year

ADDITIONAL INCLUDED ACCESSORIES

TS24 / TS32/ TS32r includes:	Basic kit with neck lanyard, video cable and operator's manual
TS24 Pro / TS32 Pro / TS32r Pro includes:	Basic kit + tactical bag, USB cable and SD card

OPTIONAL ACCESSORIES

2X Optical Extender	Available for both models	Available for both models	N/A
Optional Tactical Bag (standard on Pro models)	Available option for TS24	Available option for TS32	Available option for TS32r

PERFORMANCE

Range Performance*	with std 24° Lens / with 2x Extender	with std 24° Lens / with 2x Extender	with std 7° Lens
Detect Man sized target (~1.8 m x 0.5 m)	~350 yds (~320 m)/ ~600 yds (~550 m)	~500 yds (~460 m)/ ~900 yds (~825 m)	~1400 yds (~1.3 km)

*Note ~Actual range performance will vary depending on camera set-up, environmental conditions, density of obstructing foliage, user experience, lens cleanliness and display (viewfinder vs. external).

Equipment described herein may require US Government authorization for export purposes. Diversion contrary to US law is prohibited. Specifications are subject to change without notice. For the most up-to-date specs, visit our website: www.flir.com. ©2010 FLIR Systems, Inc. All other brand and product names are trademarks of FLIR Systems, Incorporated. 1002-227

1.888.610.7664



www.calcercert.com

sales@calcercert.com