

TRAMEX REMOTE ENVIRONMENTAL MONITORING SYSTEM TREMS-Xtra



The Tramex Remote Environmental Monitoring System Xtra has been designed and developed by Tramex for professionals who depend on the most accurate, reliable, real-time building environment temperature and relative humidity readings using state of the art technology to respond quickly to environmental changes and notify users. The TREMS-Xtra comprises a Tramex Cloud Station router, 5 CS-RHTX Tramex Cloud Sensors for ambient conditions, as well as 5 external Relative Humidity probes. These external probes extend the benefits of the remote monitoring system allowing for in-situ readings within building structures cavities in walls and ceilings and in situ RH readings in concrete.

Multiple Sensors can be used with one Station and additional sensor Accessory Packs are also available. Registration and on-site set-up is simple using a QR code check-in procedure. The on-site Sensors, with battery life of up to 15 years, transmit relative humidity, temperature (°C and °F), dew point and grains per pound / grams per kilo readings wirelessly via the Tramex Cloud Station enabling remote monitoring of up to 200 on-site Sensors on the Tramex Cloud platform.

Tramex Cloud is a secure platform to store and report your moisture, temperature and relative humidity measurements, get notified of adverse conditions and quickly monitor status from any browser. There are no subscription fees and there is free data with the Tramex Remote Environmental Monitoring System.



KIT CONTENTS

1. 5 x CS-RHTX Tramex Cloud Sensors
2. 5 x External Relative Humidity probes for in-situ
3. 1 x Tramex Cloud Station
4. 1 x Heavy Duty Protective Carry Case
5. Tramex Cloud Software Monitoring platform (Tablet not included)
6. Antennae for Cloud Station

Product Code: TREMS-Xtra



AMBIENT
DU T RD RH



IN SITU
DU T RD RH



TRAMEX CLOUD



ONLINE INFO

TDEM-Ver 1.10/22 DEV 1.1

1.888.610.7664



www.calcert.com

sales@calcert.com

SPECIFICATIONS

TRAMEX CLOUD SENSOR - SPECIFICATIONS & MEASURING RANGE



Sensors can be easily registered by scanning the QR code on the back of the instrument and clicking 'register' in your Cloud account.

Size:	3.94" x 3.54" x 1.38" (100mm x 90mm x 35mm)	Transmission Range:	Up to 2 miles line-of-sight
Weight:	3.53oz (100g)	Communication Frequency:	Multiple readings per hour
Power:	Built in CR123A battery with up to 15 year lifespan	Identification:	Items individually coded for ease of install and logging identification.
Construction:	ABS enclosure		
Included:	Wall Mounting		
RELATIVE HUMIDITY SENSOR SPECIFICATIONS		TEMPERATURE SENSOR SPECIFICATIONS:	
Exceptional Accuracy:	±1.5%RH Range 0% to 80%RH ±2.0%RH Range 80% to 99%RH (@ 77°F (25°C))	Exceptional Accuracy:	±0.1°F Range 68°F to 140°F (±0.1 °C Range 20°C to 60°C)
Range:	0 to 100%RH	Range:	-40°F to 257°F (-40°C to 125°C)
Resolution:	0.1% over the complete range	Sensor Protection:	PTFE Film protects sensor opening from water & dust
Drift:	<0.25%RH per year	Drift:	<0.04°F (0.03°C) per year

RELATIVE HUMIDITY SENSOR



This 4.5" (100mm) sensor can be used for the evaluation of moisture conditions within building materials, walls and cavity structures within the building envelope. It can also be used with the Tramex Hygrohood for non-destructive Relative Humidity testing of concrete and other cementitious materials.

RELATIVE HUMIDITY SENSOR SPECIFICATIONS		TEMPERATURE SENSOR SPECIFICATIONS:	
Exceptional Accuracy:	±1.5%RH Range 0% to 80%RH ±2.0%RH Range 80% to 99%RH (@ 77°F (25°C))	Exceptional Accuracy:	±0.1°F Range 68°F to 140°F (±0.1 °C Range 20°C to 60°C)
Range:	0 to 100%RH	Range:	-40°F to 257°F (-40°C to 125°C)
Resolution:	0.1% over the complete range	Sensor Protection:	PTFE Film protects sensor opening from water & dust
Drift:	<0.25%RH per year	Drift:	<0.04°F (0.03°C) per year

TRAMEX CLOUD STATION



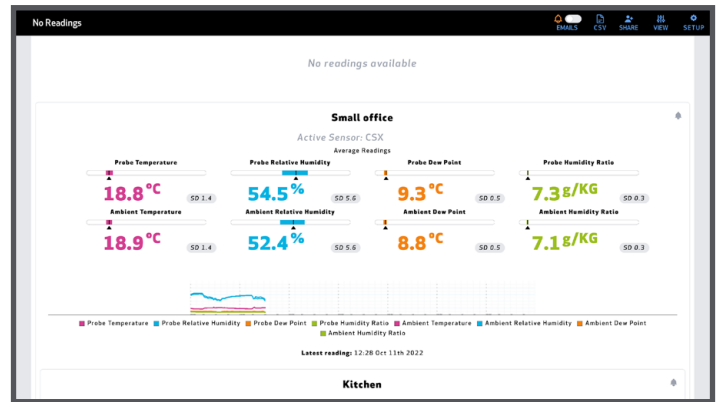
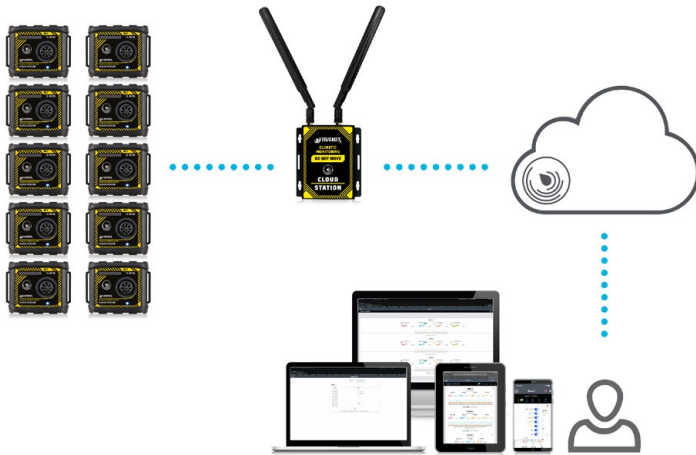
The Cloud Station can be easily registered by scanning the QR code on the back of the instrument and clicking 'register' in your Cloud account.

Size:	5.12" x 4.53" x 1.19" (130mm x 115mm x 30mm)	Frequency:	Region Specific frequency available
Weight:	9.5oz (270g)	Security:	WPA2-PSK encryption, no unwarranted telemetry/tracking.
Power:	Universal AC Power Adapter		

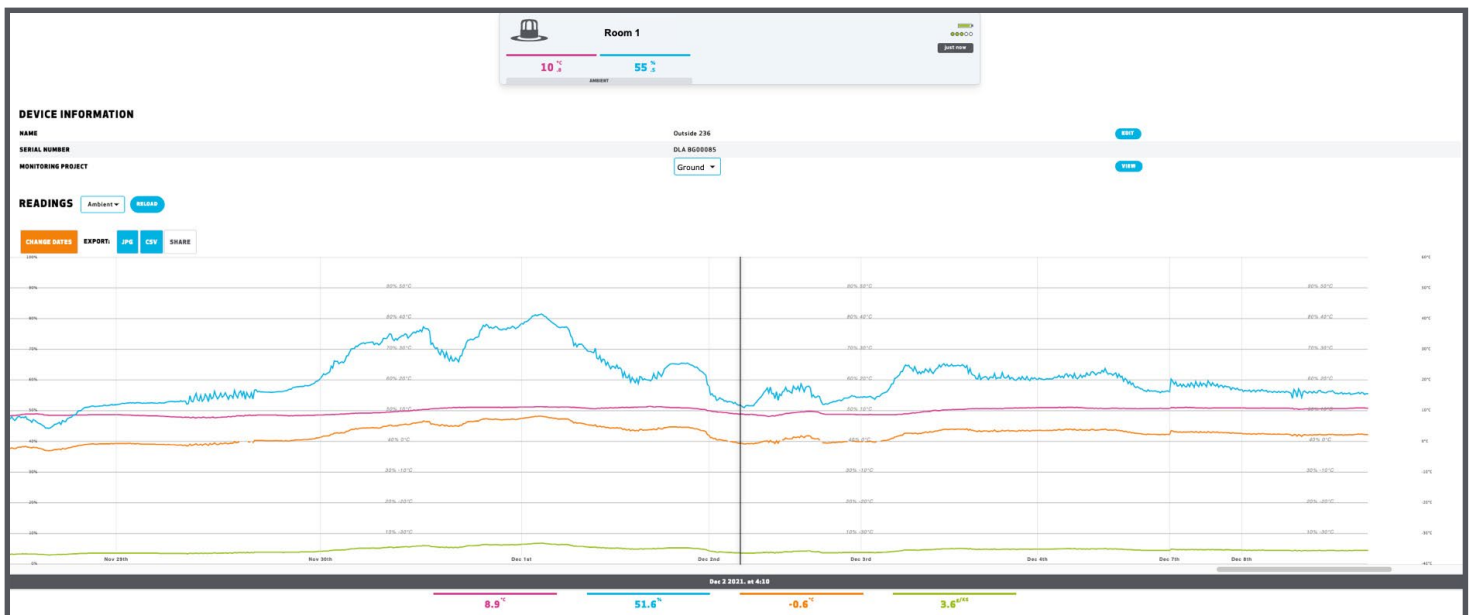
SPECIFICATIONS

TRAMEX CLOUD

The Tramex Cloud stores all your project details and logging information securely and allows for remote monitoring.



Detailed logging charts



Data is stored free of charge for a period of 2 years, after which, following our data retention policy, you will need to download it.

KIT SPECIFICATIONS

Size: 17.1" x 14.2" x 5.5" (43.5cm x 36cm x 14cm)

Weight:

7.6lbs (3.56kg)

Power: 5 x CR123A 3-volt batteries (included)

