



LogTag[®] TRED30-16U

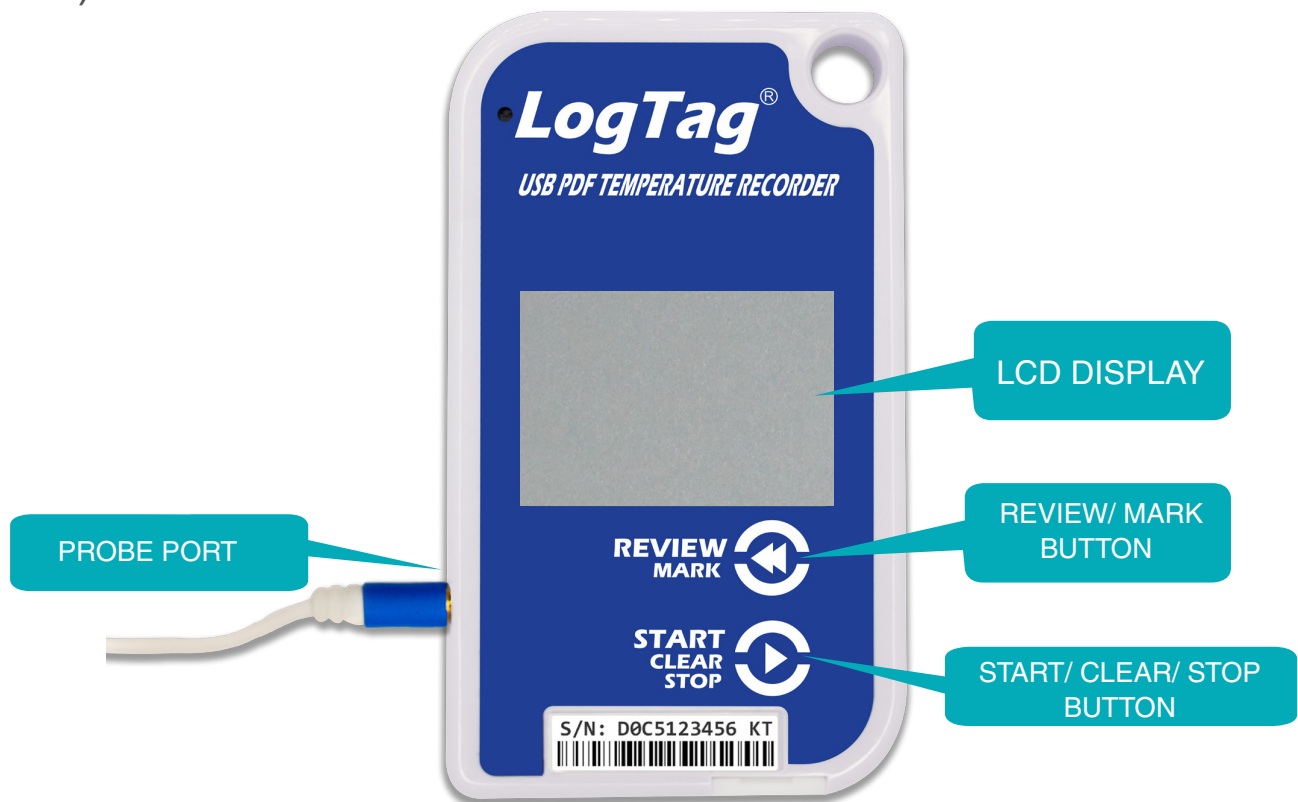
Quick Start Guide

Version A

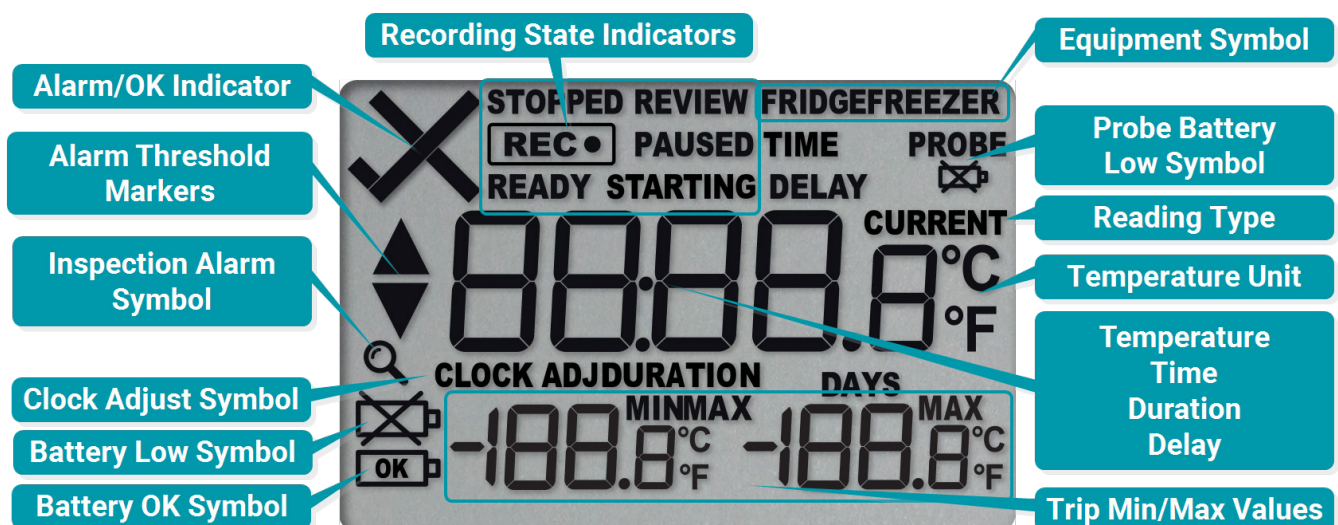
Device Overview	3
Activating the TRED30-16U	4
Starting the Logger	5
Stopping the Logger	6
Downloading Results	7
Compatible Accessories	8

As-supplied state:

You will receive the logger in hibernate mode, meaning the display (LCD) will be blank.



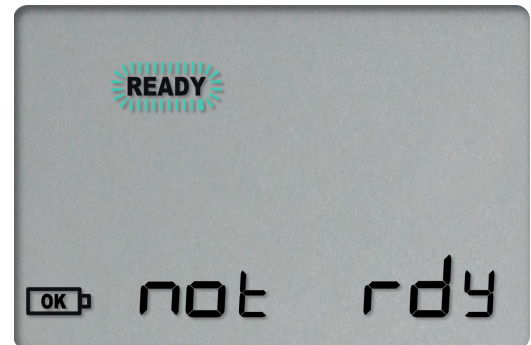
TRED30-16U Display Overview



1) Activating the logger

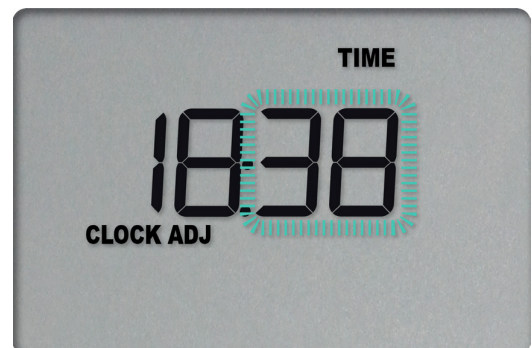
1. Press and hold both the **REVIEW/MARK** and **START/CLEAR/STOP** buttons simultaneously.
2. The word “READY” will flash on the screen.
3. Release both buttons when “READY” is solid (Stops Flashing).

Screen preparing for clock setup.

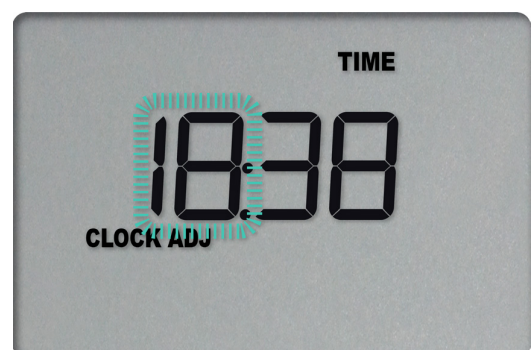


2) Setting the clock

1. The **START/CLEAR/STOP** button saves the current value on the screen.
2. The **REVIEW/MARK** button adjusts the flashing value.
3. Use **REVIEW/MARK** to adjust the minutes.
4. Press **START/CLEAR/STOP** to save and move to the **Hours**.
5. Repeat the process for hours, adjusting with **REVIEW/MARK** and saving with **START/CLEAR/STOP**.



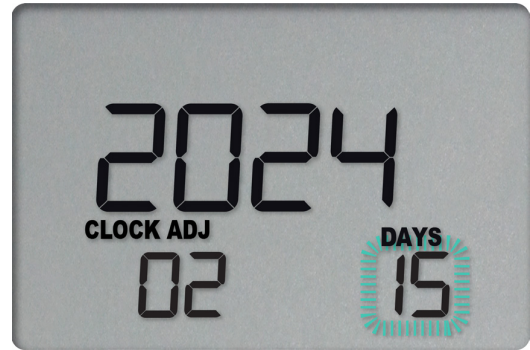
- **Minutes** will flash first.



- **Hour** will flash second.

3) Setting the date

1. After setting the time, the **Year** will flash.
2. Use **REVIEW/MARK** to adjust the year, and press **START/CLEAR/STOP** to save.



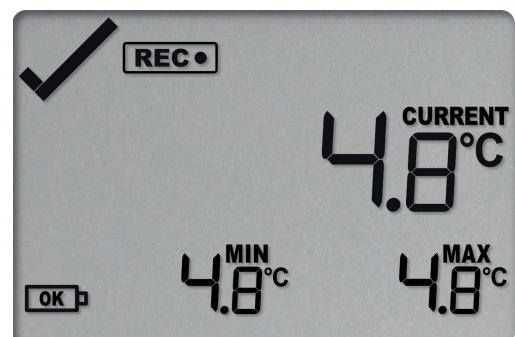
- Adjust the month using **REVIEW/MARK** and save with **START/CLEAR/STOP**.

3. The next screen will show the **Month**.
4. Finally, adjust the **Day** the same way and save. The screen will now display the current time and show “READY.”

Plug in your regular or Smart **Probe** after the date and time are set, but **before starting the logger**.

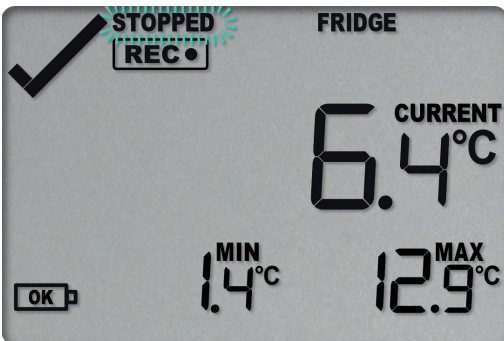
4) Starting the logger

1. With the probe plugged in, press and hold the **START/CLEAR/STOP** button.
2. Release the button when the screen displays **Current, Min, and Max** temperatures.
3. The temperature readings should now be visible, with the minimum and maximum values displayed below the current temperature.
Your logger is now recording.

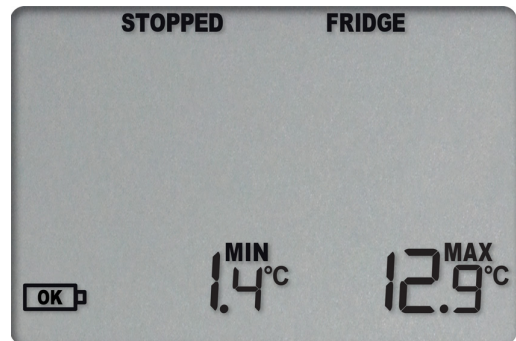


Stopping Recording

1. To stop recording, press and hold the **Start/Clear/Stop** button.
2. Release the button when the “REC” icon disappears, and “STOPPED” appears on the display.
3. The display will now show the **Min** and **Max** temperatures recorded during the logging period.



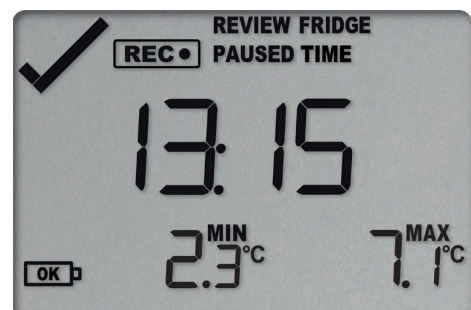
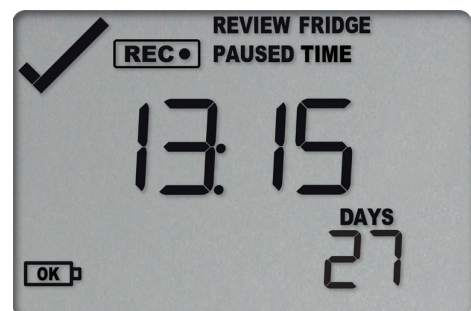
Wait for the “REC” icon to disappear.



Display in stopped state.

Reviewing Recorded Data

1. Press the **Review/Mark** button to view a summary of your recording.
- The first press will display the current time and the number of days the logger has been recording.
 - The second press will show the MIN & MAX temperature recorded and the time.



Downloading Results



1. Connect your TRED30-16U to your computer using the USB-C port.

2. The display will flash “USB” as the logger generates a PDF or data report.



3. The data will now appear in your file explorer as a named USB drive. Simply drag and drop the exported files to your desired location.

Your data is now ready for review!

Custom Configuration

The TRED30-16U is fully operational straight out of the box, having been preconfigured at the factory. You can personalize its settings using LogTag’s free proprietary software, LogTag Analyzer. To find out how to create custom configurations, simply scan the QR code, which will lead you to the TRED30-16U User Manual.



TRED30-16U
User Manual

Accessories

Required:

The TRED30-16U requires these items for proper functioning.

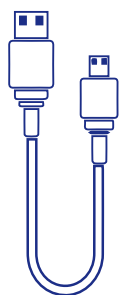


CP100 Smart Probe

Or

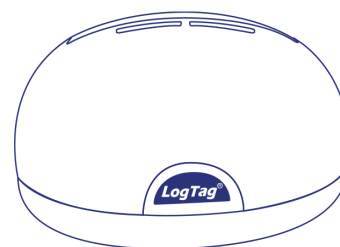


ST10 External Probe



USB-C Cable

Or



LTI Cradle

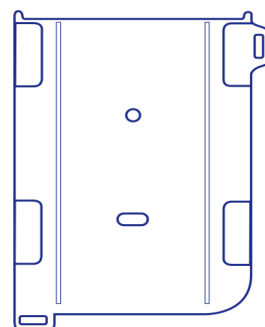
The TRED30-16U features a new USB-C connection, eliminating the need for the LTI interface, while the logger retains its three-pin for LTI compatibility.

Optional:

The TRED30-16U is compatible with the following accessories.



Buffer Bottle



Wall Mount