



LogTag[®]

TRED30-16R

30 Day Display
External Probe Logger

1.888.610.7664

 www.calcert.com

sales@calcert.com

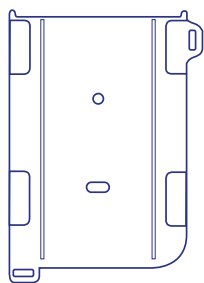


The LogTag® TRED30-16R Temperature Recorder measures and stores up to 15,900 temperature readings over a -40°C to +99°C (-40°F to +210°F) measurement range from an External Probe.

The display is designed to show 'at a glance' if temperature excursions have occurred during the current day and up to the previous 29 days.

The alarm is triggered if temperature readings are outside pre-set alarm limits. The status indicator changes from a ✓ to a X and, if configured, the audible alarm will sound.

Accessories



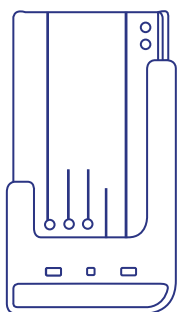
Wall Mount
Not Included



Glycol Buffer
Not Included



LTI-HID
Not Included



LTI-WM-WiFi
Not Included



External Probe
Not Included. (Required)

Sensors are available with a 1.5m or 3m cable.
E.g. ST100J-15 for 1.5m or ST100J-30 for 3m cable.

Compatible probes below:

ST100J	40mm tip length, ø3.2mm.
ST100K	65mm tip length, ø3.2mm.
ST100L	90mm tip length, ø3.2mm.
ST100S	30mm tip length, ø5mm.
ST100T	140mm tip length, ø5mm.
ST100H	Handled with 105mm tip length, ø5mm.
ST100B	Untipped (bare sensor).
STX50	5 Meter extension cable for ST10/ST100 sensors.



Up to 15,900 sets of recordings
- enough memory for 66 days at
6min logging



A real time clock provides date/
time stamps for each temperature
reading.



Records temperature from -40°C
to +99°C



Inspections can be recorded at the
push of a button.



Comprehensive customisation
options including alarm settings,
sample interval and trip duration



Built-in audible alarm.



Auto-pause function - unplugging
the external probe automatically
suspends alarm & statistics
processing.



Interchangeable External Probe
with high quality gold plated
connector.



User replaceable coin cell battery.



Rapid configuration and download.



Healthcare



Pharmaceuticals



Transportation



Cold Room



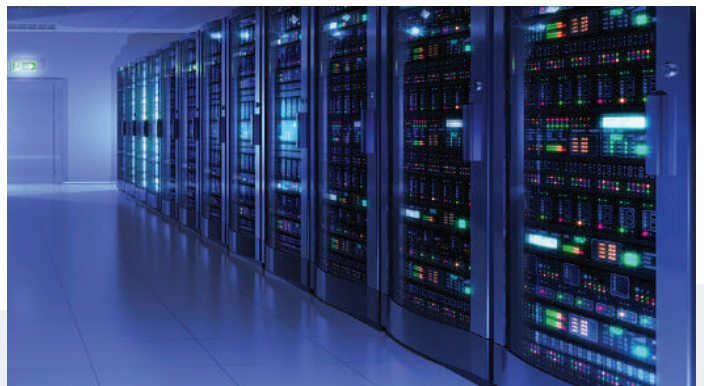
Produce



Blood & Organ Transport



Indoor Space



HVAC

Product Model	TRED30-16R (Replaceable Battery).
External Temperature Sensor Measurement Range	-40°C to +99°C (-40°F to +210°F).
Operating Temperature Range	-30°C to +60°C (-22°F to +140°F).
Storage Temperature Range	-10°C to +40°C (14°F to +104°F).
Rated Temperature Reading Accuracy	Better than $\pm 0.5^{\circ}\text{C}$ ($\pm 0.9^{\circ}\text{F}$) for -20°C to $+40^{\circ}\text{C}$ (-4°F to $+104^{\circ}\text{F}$), typically $\pm 0.3^{\circ}\text{C}$ (0.6°F). Better than $\pm 0.8^{\circ}\text{C}$ ($\pm 1.4^{\circ}\text{F}$) for -40°C to -20°C (-40°F to -4°F), typically $\pm 0.5^{\circ}\text{C}$ (0.9°F). Better than $\pm 0.8^{\circ}\text{C}$ ($\pm 1.4^{\circ}\text{F}$) for $+40^{\circ}\text{C}$ to $+70^{\circ}\text{C}$ ($+104^{\circ}\text{F}$ to $+158^{\circ}\text{F}$), typically $\pm 0.7^{\circ}\text{C}$ (1.3°F). Better than $\pm 1.2^{\circ}\text{C}$ ($\pm 2.2^{\circ}\text{F}$) for $+70^{\circ}\text{C}$ to $+99^{\circ}\text{C}$ ($+158^{\circ}\text{F}$ to $+210^{\circ}\text{F}$), typically $\pm 1^{\circ}\text{C}$ (1.8°F). <i>Actual performance is typically much better than the rated values. Accuracy figures can be improved by recalibration.</i>
Rated Temperature Reading Resolution	0.1°C (0.2°F) for measurements -40°C to $+50^{\circ}\text{C}$ (-40°F to $+122^{\circ}\text{F}$) 0.2°C (0.4°F) for measurements $+50^{\circ}\text{C}$ to $+70^{\circ}\text{C}$ ($+122^{\circ}\text{F}$ to $+158^{\circ}\text{F}$) 0.3°C (0.5°F) for measurements $+70^{\circ}\text{C}$ to $+80^{\circ}\text{C}$ ($+158^{\circ}\text{F}$ to $+176^{\circ}\text{F}$) 0.4°C-0.6°C (0.7°F to 1°F) for measurements $+80^{\circ}\text{C}$ to $+99^{\circ}\text{C}$ ($+176^{\circ}\text{F}$ to $+210^{\circ}\text{F}$) <i>LogTag Analyzer® currently displays to one decimal place of °C or °F. The native resolution is what is stored in the LogTag®.</i>
Recording Capacity	15,905 temperature readings. 66 days @ 6min logging Day summary statistics memory (for display on LCD): up for 30 days of Max/Min/duration and alarm trigger statistics.
Sampling Interval	Configurable from 30 seconds to hourly.
Logging Start Options	Push button start or specific date & time. Optional start delay of up to 18hours.
Recording Indication	State indicator "REC"
Download Time	Typically less than 10 seconds for full memory (15,905 readings), depending on computer or readout device used.
Environmental	IP61 (when vertically mounted or hung).
Power Source	3V CR2032 (LiMnO ₂) coin cell battery, user replaceable
Battery Life	1 year storage, followed by 1 year of operation with normal use (6 minute logging, statistics reviewed on the display no more than once daily for no longer than 30 seconds each time, download data monthly). NOTE: Continual activation of the audible alarm will reduce the working life of the battery. When an alarm is triggered, the alarm should be cleared and reset as soon as possible.
Real Time Clock	Built-in real time clock. Rated accuracy $\pm 25\text{ppm}$ @ 25°C (equivalent to 2.5 seconds/day). Rated temperature coefficient is $-0.034 \pm 0.006\text{ppm}/^{\circ}\text{C}$ (i.e typically +/- 0.00294 seconds/day/°C).
Standard External Probe Cable Lengths	Standard: 1.5m (4'11"). Extended: 3 m (9'10") (recommended maximum).
Remote External Probe Type	PTFE (FDA food contact rated) coaxial.
Size	93mm(H) x 54.5mm(W) x 8.6mm(T).
Weight	41g without External Probe.
Case Material	Polycarbonate.



Revision E (141221) © Copyright 2021, LogTag North America Inc. All rights reserved.
LogTag® is a registered trademark of LogTag North America Inc.
LogTag North America Inc. reserves the right to change this specification without notice.

1.888.610.7664



www.calcert.com

sales@calcert.com