

TEMPRETRIEVER

LOW COST REUSABLE TEMPERATURE DATA LOGGER



Features

- Pushbutton Start/Stop
- LED Alarm Indication
- User Selectable Alarm Limits
- Reusable
- Programmable Start Time
- Real time Operation
- Miniature Size
- 38,400 Baud Offload Speed
- Low Cost
- CE Approved

Benefits

- Simple Setup and Installation
- Minimal Long-Term Maintenance
- Long-Term Field Deployment

Applications

- Implement HACCP Programs
- Record Temperature of Perishable Goods in Transit
- Warehouse Monitoring
- Environmental Studies
- HVAC
- Museum Monitoring
- Replace Costly Strip Chart Recorders
- Medical and Pharmaceutical

The TempRetriever is a low cost, reusable temperature recording device which allows for a myriad of applications. The device excels in dry applications such as shipping, museums, R&D, warehouses and HVAC. It boasts an accuracy of $\pm 0.5^{\circ}\text{C}$ and a resolution of 0.1°C . The TempRetriever can store up to 16,383 readings in its non-volatile memory. This coupled with up to a one year battery life and LED alarm indication makes this a perfect temperature recorder when keeping costs down is paramount.



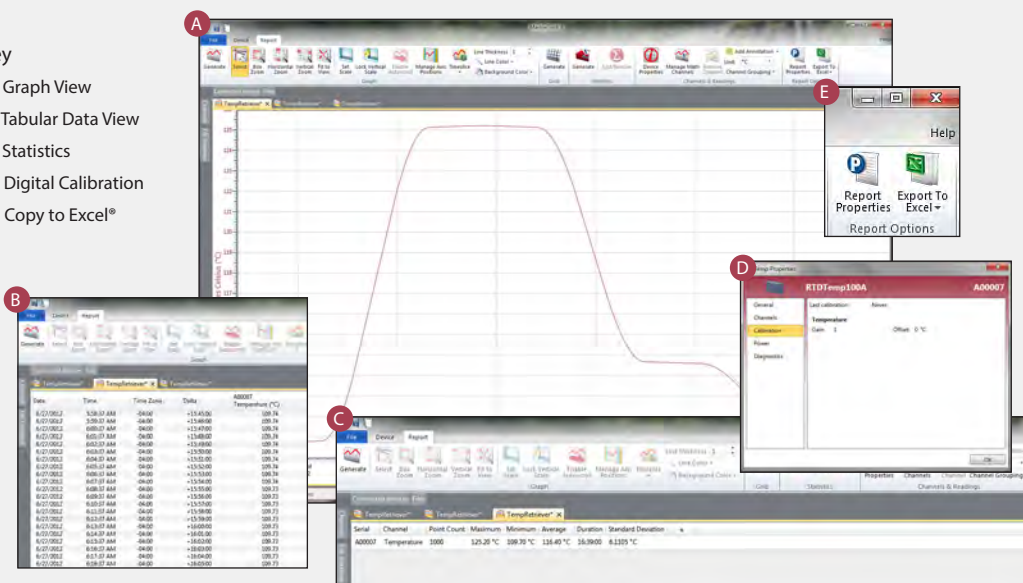
The MadgeTech software includes a full host of features that allows the user to set the start method (i.e. pushbutton, delayed start or start now), the start date and time, sample rate, high/low alarm limits, 6-character device ID and a 16-character extended ID. Data can be offloaded and displayed in $^{\circ}\text{C}$, $^{\circ}\text{F}$, K and $^{\circ}\text{R}$. The software will also automatically calculate Mean Kinetic Temperature as well as other useful statistics to simplify analysis. For additional custom analysis, the data can be quickly exported into a MS Excel[®] spreadsheet with the click of a button.

Industries such as education, research, and perishable goods transport will all benefit from the remarkable value this device represents.

MADGETECH DATA LOGGER SOFTWARE

Key

- A Graph View
- B Tabular Data View
- C Statistics
- D Digital Calibration
- E Copy to Excel[®]



Software Features:

- Multiple graph overlay
- Statistics
- Digital calibration
- Zoom in/ zoom out
- Lethality equations (F0, PU)
- Mean Kinetic Temperature
- Full time zone support
- Data annotation
- Min./Max./Average lines
- Data table view
- Automatic report generation
- Summary view
- Multilingual

TEMPRETRIEVER SPECIFICATIONS*

Temperature Sensor:	Semiconductor
Temperature Range:	-40 °C to +80 °C (-40 °F to +176 °F)
Temperature Resolution:	0.1 °C (0.18 °F)
Calibrated Accuracy:	±0.5 °C (0 °C to +50 °C)
Alarm:	Programmable high and low limits; when logged exceeds either limit, red LED blinks every 3 seconds.
Activity Indicator:	Green LED blinks every 15 seconds to indicate device has been started.
Start Modes:	Software programmable immediate start or delay start up to six months in advance; or external pushbutton start/stop.
Real Time Recording:	May be used with PC to monitor and record data in real time.
Memory:	16,383 readings
Reading Rate:	1 reading every 5 seconds up to 1 reading every 30 minutes
Calibration:	Digital calibration through software
Calibration Date:	Automatically recorded within device

Battery Type:	3.6V lithium battery included, user replaceable
Battery Life:	1 year typical (1 minute reading rate at +25 °C (+77 °F))
Data Format:	Date and time stamped °C, °F, K, °R
Time Accuracy:	±1 minute/month at +20 °C (+68 °F) (RS232 cable not in use)
Computer Interface:	PC serial or USB (interface cable required); 38,400 baud
Software:	XP SP3/Vista/Windows 7/Windows 8
Operating Environment:	-40 °C to +80 °C (-40 °F to +176 °F), 0 %RH to 95 %RH non-condensing
Dimensions:	1.4 in x 2.2 in x 0.6 in (36 mm x 56 mm x 16 mm)
Weight:	0.8 oz (23 g)
Materials:	ABS plastic
Approvals:	CE

BATTERY WARNING: FIRE, EXPLOSION, AND SEVERE BURN HAZARD. DO NOT SHORT CIRCUIT, CHARGE, FORCE OVER DISCHARGE, CRUSH, PENETRATE, OR INCINERATE. BATTERY MAY LEAK OR EXPLODE IF HEATED ABOVE 100 °C (212 °F).

ORDERING INFORMATION

MODEL	DESCRIPTION
TEMPRETRIEVER	Low Cost, Reusable, Temperature Recorder
IFC200	Software, manual and USB interface cable
Calibration Certificate	Calibration Certificate available for data logger
LTC-7PN	Replacement battery for TempRetriever

ASK ABOUT
OUR OTHER
DATA
LOGGERS

Temperature
Humidity
Pressure
pH
Level
Shock
LCD Display
Pulse/Event/State
Current
Voltage
Wireless
Intrinsically Safe
Spectral Vibration
Motion