

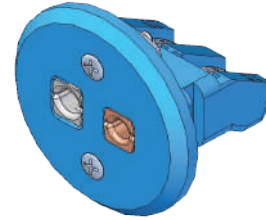


# Accessories

## Connectors

### Single Panel Mount Hardware, 425°F (218°C)

Rugged one-body design using thermocouple materials and spring loaded inserts, these units fit panels up to 7/16 inch thick. Panel cutout: 1 1/8 inch to 1 5/16 inch hole. Units fit into standard 3/4 inch knockouts.



### Ordering Information

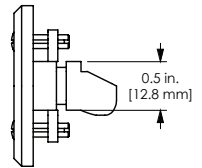
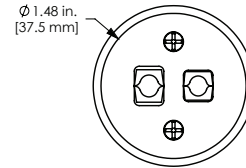
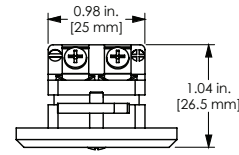
#### Part Number

①	②	③	④	⑤	⑥	⑦
			Calibration	Name Plate	Color Code	
SKP						

Calibration	
J	= Type J
K	= Type K
T	= Type T

Name Plate	
N	= Without name label

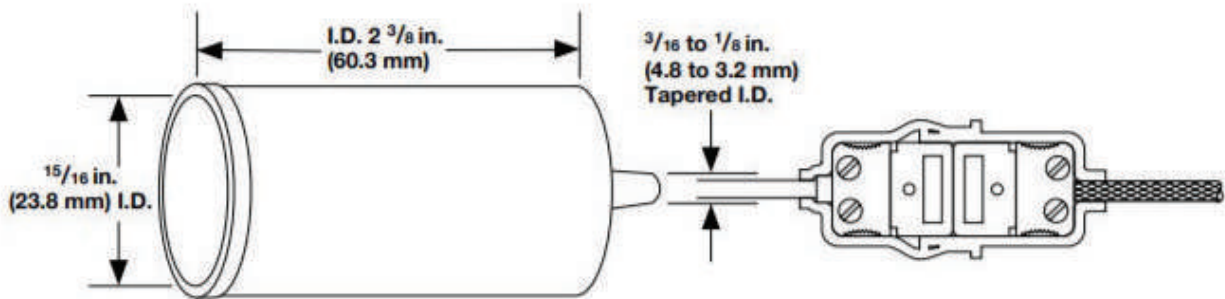
Color Code	
AT	= ASTM E 230 color code/uncompensated = white



### Weather Resistant Boots

Used in pairs as illustrated, these flexible neoprene rubber boots add moisture protection to standard plug-to-jack connections.

Part Number: **943**



**Note:** All accessories are subject to minimum purchase quantities.