



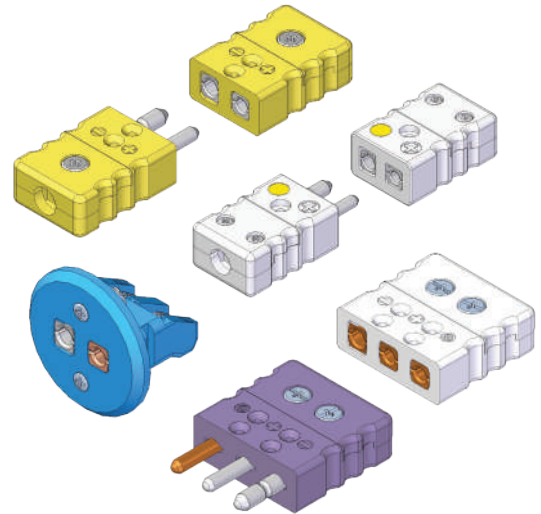
Connectors

Many varieties of thermocouple connectors are available from Watlow®. Watlow's broad offering includes benefits such as high impact strength, fast installation and high temperature capabilities.

Listed below are the various connectors and systems from which to choose:

- Standard thermocouple connectors
- Quick-attach thermocouple connectors
- High temperature connectors
- Three-pole connectors for RTD applications
- Miniature thermocouple connectors

Watlow's standard line of connectors are lightweight, rugged and accurate. Color coded to easily identify calibration type, these connectors also have larger cap screws for easier assembly.



Features and Benefits

ASTM color coded

- Ensures easy identification

Compensated alloys

- Provides accuracy in readings

Glass-filled thermoplastic

- Provides high impact strength

Captive cap screws

- Ensures a secure connection

Connection hardware

- Eliminates several components

Meets requirements for ASTM E1129

- Ensures adequate pin spacing, dimensions and contact resistance

Rated to 425°F (215°C)

- Fits high-temperature applications

Note: All accessories are subject to minimum purchase quantities.



Connectors

"S" SERIES Standard Connectors 425°F (215°C)

Ordering Information

Part Number

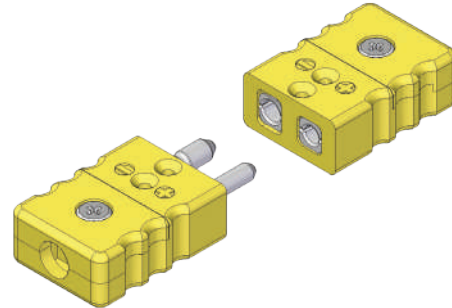
① ②	③	④	⑤	⑥ ⑦
SC	Style	Calibration	Name Plate	Color Code

③	Style
M =	Male (plug)
F =	Female (jack)

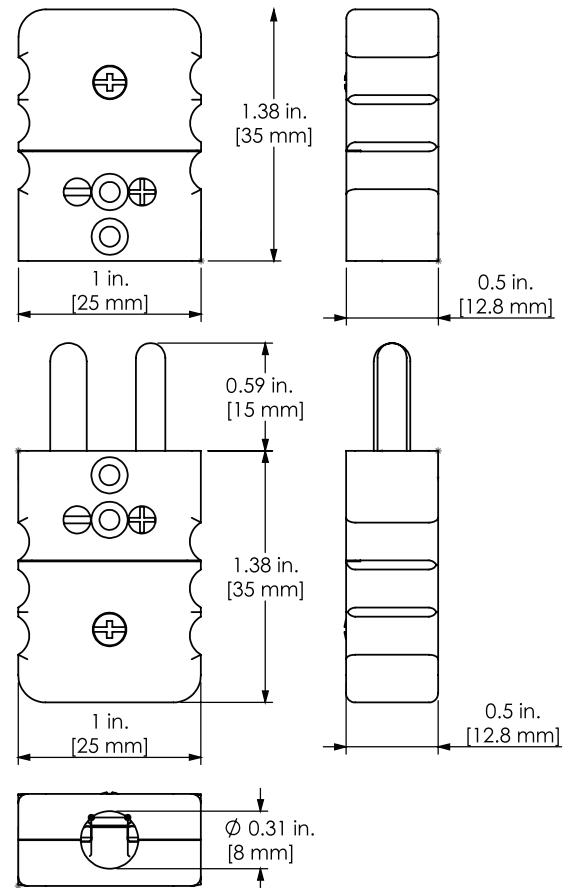
④	Calibration
E =	Type E
J =	Type J
K =	Type K
S =	Type S / Type R
T =	Type T
U =	Uncompensated

⑤	Name Plate
N =	Without name label

⑥ ⑦	Color Code
AT =	ASTM E 230 color code



Standard Connector

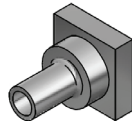


Crimp/Nickel Plated Brass Style

Ordering Information

Part Number

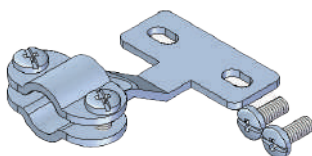
① ② ③	④ ⑤ ⑥
SAB	Style



④ ⑤ ⑥	Style
040 =	0.040 in.
063 =	0.063 in.
090 =	0.090 in.
125 =	0.125 in.
188 =	0.188 in.
250 =	0.250 in.
30M =	3.0 mm
60M =	6.0 mm

Cable Clamp Style for Male or Female

Part Number: **SAC-220**



Note: All accessories are subject to minimum purchase quantities.