

# INTERNALLY MOUNTED PLASTIC NEMA 4X ENCLOSURES FOR PRECISION DIGITAL METERS



## PDA2407-PDA2415 ENCLOSURES

These NEMA 4X enclosures provide a high degree of protection against the harsh operating environment of an industrial plant. The Precision Digital meters are mounted inside the enclosure for maximum protection. The clear cover is held in place with four screws.

### Meter Types

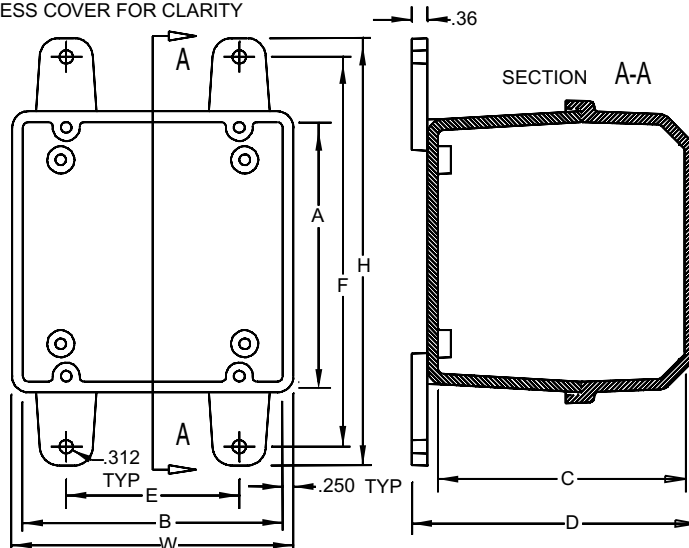
| Type | Meters  |
|------|---|
| A    | PD118, PD690, PD691, PD692, PD693, PD750, PD751, and PD752        |
| B    | PD542, PD543, and PD562   |
| C    | PD603, PD644, PD683, PD684, PD688, PD689, PD743, PD765, and PD865 |
| D    | PD138, PD154, and PD158   |
| E    | PD6000, PD6200, PD6300, and PD7000                                |

## ENCLOSURE DIMENSIONS

Note: All dimensions are in inches and millimeters (mm)

| Model   | Overall Outside Dimensions (with brackets) (H x W x D) | Inside Dimensions (A x B x C)          | Mounting Dimensions (F x E) | Weight lb (kg) |
|---------|--|--|-----------------------------|----------------|
| PDA2407 | 9.9 x 6.5 x 6.7<br>(251 x 165 x 170)                   | 6.0 x 6.0 x 5.9<br>(152 x 152 x 151)   | 9.0 x 4.0<br>(228 x 102)    | 2.4<br>(1.1)   |
| PDA2408 |  |  |                             |                |
| PDA2409 | 13.9 x 8.5 x 6.7<br>(352 x 216 x 170)                  | 10.0 x 8.0 x 5.9<br>(254 x 203 x 151)  | 13.0 x 6.0<br>(330 x 152)   | 4.1<br>(1.8)   |
| PDA2410 |  |  |                             |                |
| PDA2411 |  |  |                             |                |
| PDA2412 |  |  |                             |                |
| PDA2414 |  |  |                             |                |
| PDA2415 | 15.9 x 10.5 x 7.7<br>(403 x 267 x 195)                 | 12.0 x 10.0 x 6.9<br>(305 x 254 x 176) | 15.0 x 8.0<br>(381 x 203)   | 5.6<br>(2.5)   |

PLAN VIEW SHOWN  
LESS COVER FOR CLARITY



## ORDERING INFORMATION

| PDA2407-2415 NEMA 4X Enclosures |                           |             |      |   |   |   |   |
|---------------------------------|---------------------------|-------------|------|---|---|---|---|
| Model                           | Description               | # of Meters | Type |   |   |   |   |
|                                 |                           |             | A    | B | C | D | E |
| PDA2407                         | Plastic NEMA 4X Enclosure | 1           | •    | • | • | • | • |
| PDA2408                         | Plastic NEMA 4X Enclosure | 2           |      | • |   |   |   |
| PDA2409                         | Plastic NEMA 4X Enclosure | 3           |      | • |   |   |   |
| PDA2410                         | Plastic NEMA 4X Enclosure | 4           |      | • |   |   |   |
| PDA2411                         | Plastic NEMA 4X Enclosure | 2           | •    | • | • | • | • |
| PDA2412                         | Plastic NEMA 4X Enclosure | 3           | •    |   |   |   |   |
| PDA2414                         | Plastic NEMA 4X Enclosure | 2           | •    | • | • | ■ | • |
| PDA2415                         | Plastic NEMA 4X Enclosure | 4           | •    |   |   |   |   |
| • Available ■ 1 Standard        |                           |             |      |   |   |   |   |

• Available ■ 1 Standard

### Disclaimer

The information contained in this document is subject to change without notice. Precision Digital Corporation makes no representations or warranties with respect to the contents hereof, and specifically disclaims any implied warranties of merchantability or fitness for a particular purpose. ©2009 Precision Digital Corporation. All rights reserved.

**Your Local Distributor is:**

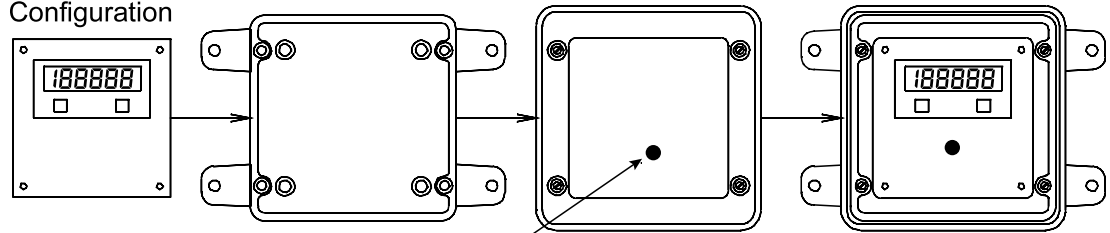


# INTERNALLY MOUNTED PLASTIC NEMA 4X ENCLOSURES FOR PRECISION DIGITAL METERS

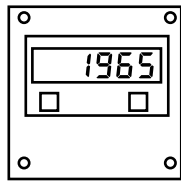
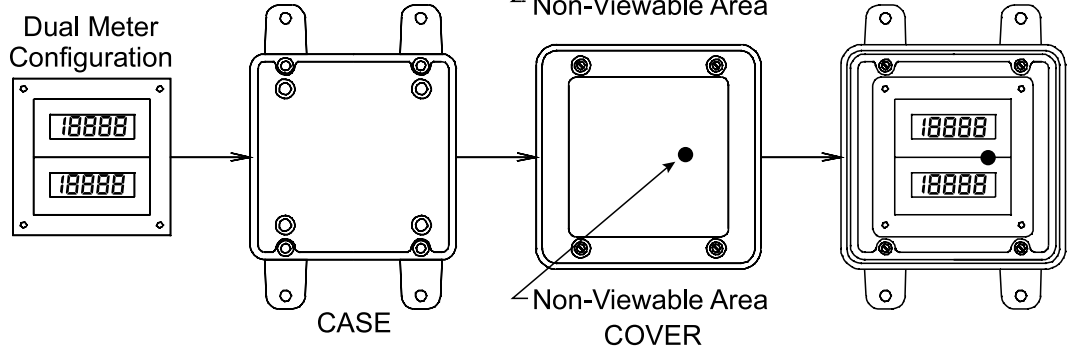
## NOTES:

1. Prior to drilling the hole for the conduit, align the display for best viewing through clear cover as shown.
2. Position the meter(s) such that the nonviewable area does not obstruct the displays.
3. Prior to drilling the hole for the conduit, consider the following: The dual meter configuration may be used for a single meter in the event that an additional meter is installed in the future. This will eliminate the need to re-position the case or conduit hole.

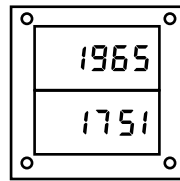
Single Meter Configuration



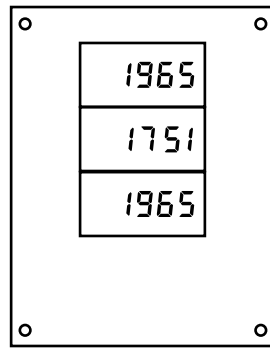
Dual Meter Configuration



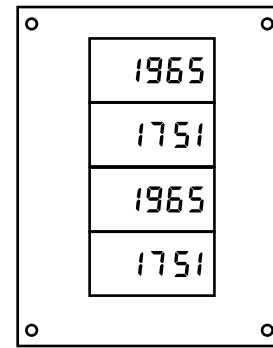
PDA2407



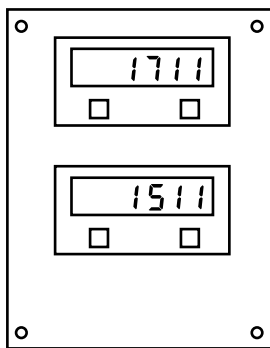
PDA2408



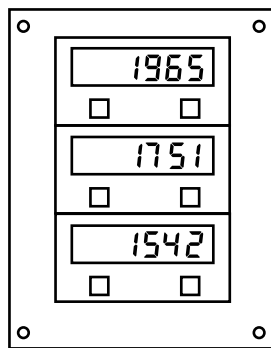
PDA2409



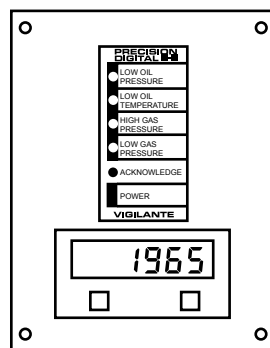
PDA2410



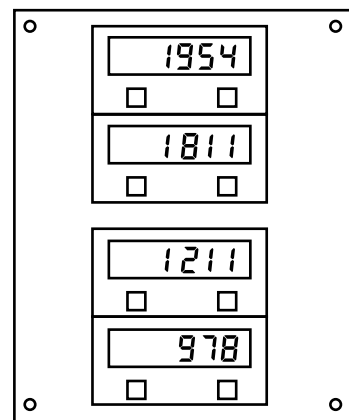
PDA2411



PDA2412



PDA2414



PDA2415

LIM2405-15\_D 07/09

**PRECISION DIGITAL CORPORATION**



1.888.610.7664



[www.calcert.com](http://www.calcert.com)

[sales@calcert.com](mailto:sales@calcert.com)