



LogTag[®] LTI-WiFi

Quick Start Guide

Version B - February 2020

Quickstart Guide Contents

What's Included 3

Downloading the Connection Wizard 4

Running the Connection Wizard 6

Connecting to your WiFi Network 9

LogTag Online 13

Registering a new device &

Downloading Results 14

What's Included

Please check you have each of the items shown below before continuing with setting up your LTI-WiFi.



LTI-WiFi



USB Cable

Note: The LTI-WiFi cradle can be used with any standard LogTag loggers with 3 silver contact pins


Downloading the Connection Wizard

Connect your LTI-WiFi to your computer via the USB cable. The USB socket on the interface is located at the back of the interface cradle.



Your LTI-WiFi requires you to connect it to your WiFi Network. To do that, we have an easy tool for you to use called the LogTag Online Connection Wizard.

Note: If you have the latest LogTag Analyzer (version 3.1.6 onwards), you can just run the wizard instead without having to download it by opening LogTag Analyzer then clicking ‘Connection Wizard’ from the ‘LogTag Online’ menu.

Alternatively, you can download the LogTag Online Connection Wizard here. Please click the link below:
<https://logtagrecorders.com/wp-content/uploads/connectionwizard.exe> 

Downloading the Connection Wizard

(continued...)

If you have issues with the link above, you can download the .zip version instead and ensure you unzip the file before running it via the link below:

<https://logtagrecorders.com/wp-content/uploads/connectionwizard.zip> 

Warning: Please ensure no other LogTag software is currently running on your computer before running the Wizard software.

• END OF PAGE

Running the Connection Wizard

Open LogTag Analyzer and select 'Connection Wizard' from the 'LogTag Online' menu.

Please ensure there is internet connection on your computer prior to starting this process.

The first page of the Wizard will be displayed. When you're ready to begin, click "**Start**".



You will be asked to sign in to your LogTag Online account. If you do not have an account, click the link

Running the Connection Wizard

Wizard (continued...)

below or alternatively, open your browser, type the following link into the address bar and follow the on-screen instructions.

or click **Create a LogTag Online Account** link.



The screenshot shows a web browser window titled "LogTag® Online Connection Wizard". The window contains the following text and elements:

- LogTag® Online Connection Wizard
- Sign in to your LogTag® Online Account below and the Wizard will assist in registering your WiFi device(s). If you do not have an account, click "Create an Account". Return to this Wizard when your account setup is complete.
- EMAIL: [text input field]
- PASSWORD: [text input field]
- [Forgot your Password?](#)
- [Create a LogTag® Online Account](#)
- Footer: [Help](#) Ver. 1.0.6.4
- Buttons: Skip, SIGN IN

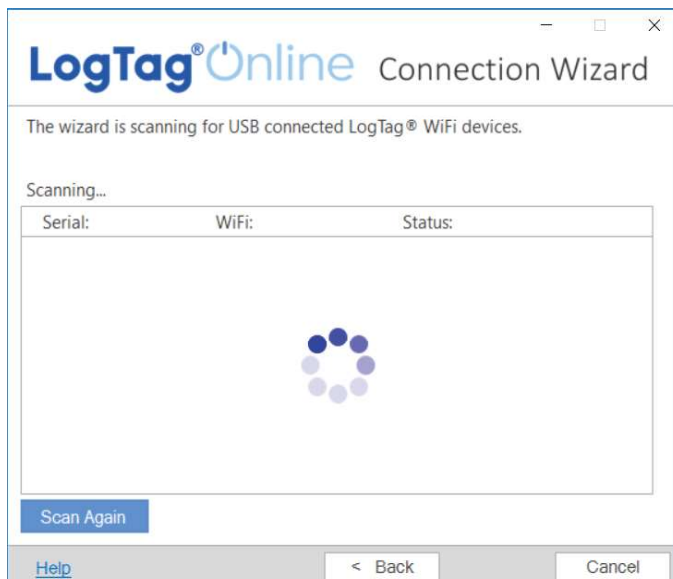
Note: If you 'Skip' this step, you will need to manually register the device on LogTag Online or repeat the LogTag Online Connection Wizard.

Click 'Sign In' after you have entered your login details to continue setting up WiFi on your LTI-WiFi.

Running the Connection Wizard

(continued...)

You have now created your account and is now ready to set up connection of your LTI-WiFi to the WiFi network.



The Wizard will now scan for any connected LogTag devices.

If the scan doesn't find any devices, double-check the device is plugged in to your computer with the USB cable provided and click "Scan Again".

Serial:	Configured WiFi:	Status:
A0A100003550	LogTag24	Registering

As soon as a device has been identified, it will appear in the table (left) and automatically register that device to your LogTag Online account.

Connecting to your WiFi Network

Serial:	Configured WiFi:	Status:
A0A100003550	LogTag24	Registered

The Status will turn green with the text “Registered” once complete.

If one or more device(s) are identified and registered, the screen automatically switches to the next screen

LogTag[®] Online Connection Wizard

Please select your Wireless Network from the dropdown below or type it in, provide the password for the chosen network. Then click 'Next'.

Network Name
LogTag5G

Network Password

Advanced Settings

[Help](#) Ver: 1.0.5.4 < Back Next >

1. Network settings are automatically populated from PC settings by default, if it can be discovered. Alternatively, click the Network Name arrow to see

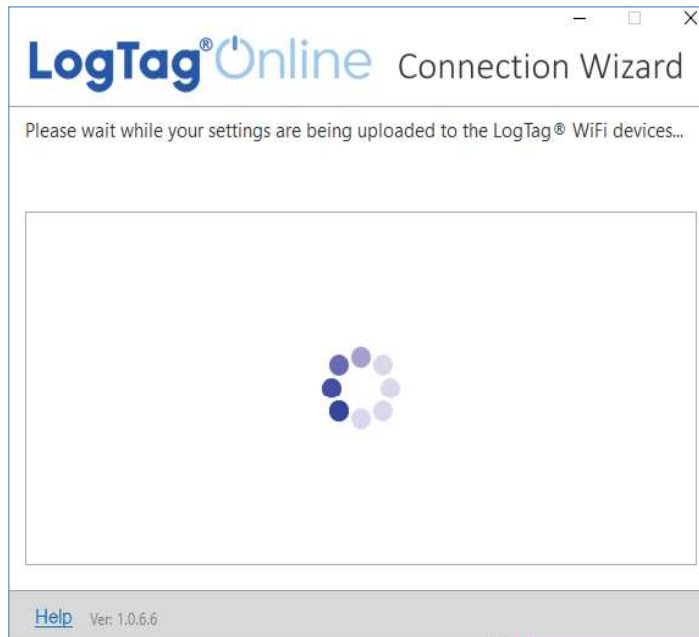
nearby Wireless Networks options and select your WiFi Network from the list and type the password for the network. **Remember that passwords are case-sensitive.**

Note: If you need to make any Advanced Network setting changes, select the 'Advanced Settings' box.

2. Once you have provided the chosen network and password, or Advanced Network settings, click **“Next”**.

Note: Some WiFi Networks won't appear in this list for security purposes. If you are aware that your network is one of these, you can manually type the name of your network (SSID) in the Network Name field instead of clicking the menu arrow.





The device is now being configured with the WiFi details you provided in the previous screen, which typically takes 10 seconds.

The Connection Wizard is now checking that the LTI-WIFI can connect to your WiFi network and to LogTag Online. The red network LED blinks while the



interface establishes a connection with the wireless network.

Once the Wizard displays “**Config Complete. Check Device for status**”, click “**Close**” to close the Connection Wizard or click ‘LogTag Online Sign In page’ link to take you to the LogTag Online website.

Or click “**Again**” if you want to run the Wizard to repeat the configuration process from the beginning.

Note: The network LED on the LTI-WiFi turns solid blue after 15-20 seconds once connection is successful. If the red network LED is flashing, please check you have entered the WiFi credentials correctly. If you are continuing to encounter networking or logger communications issues, please refer to the troubleshooting section by opening your browser and typing the below URL in the address bar:

help.logtagrecorders.com/WiFi-Interface/Topics/Interfaces/Troubleshooting.htm

• END OF PAGE

LogTag Online

LogTag Online is a secure online service that stores the data recorded from your logger against your account.

Signing in to your LogTag Online Account

Click this link or open your browser and navigate to:

1. Type your Email and Password
2. Then click “Sign In”.
3. Upon signing in, you will see the Dashboard.

Registering a new device & Downloading Results

Connect your LTI-WiFi to your computer via the USB cable. The USB socket on the interface is located at the back of the interface cradle.



Please ensure the LTI-WiFi is connected to the WiFi network and the cloud server.



The blue 'network' LED is permanently on to indicate it is connected to LogTag Online cloud server.

Registering a new device & Downloading Results (continued...)

Please ensure your logger has started prior to docking it in to the LTI-WiFi interface.

Simply dock a logger with 3 silver contact pins into the LTI-WiFi interface cradle.



The green 'Ready' LED is permanently on to indicate it is ready to accept a logger.



The red 'Busy/Error' LED is permanently on while the data is being downloaded from the logger.



The green 'Ready' LED flashes to indicate the download was successful.

After you have docked a logger into LTI-WiFi, it will automatically register the logger in LogTag Online and show in the [Recently Registered Devices](#) section of the dashboard.

Downloading Results (continued...)

Data is also downloaded from the logger and show up as LTD files in the 'Recently Uploaded Files' section on the main dashboard in LogTag Online or as saved files in LogTag Drive.

The screenshot shows the LogTag Online dashboard for 'Team Jessi'. The top navigation bar includes the user name 'Hello Jessi'. The dashboard is divided into several sections:

- Pinned Locations:** A graph showing temperature data for 'TRID30-7R UTI-WIFI' with a current temperature of 23.6°C. A red alert indicates 'Upper Alarm Excursion Detected!'.
- Recently Uploaded Files:** A table listing files with columns for File Name, Time Uploaded, and Action.
- Recently Registered Devices:** A table listing devices with columns for Model, Device Name, Serial Number, and Last Connection.

File Name	Time Uploaded	Action
S/N:6061019642 (TRD30-16R)	02:40 PM - 02-19-2020	[Download]
S/N:1063001001 (TREL30-16)	11:16 AM - 02-17-2020	[Download]
S/N:1001058714 (TRK-16)	08:30 AM - 02-07-2020	[Download]
S/N:1050021522 (TRD30-7R)	04:23 PM - 01-16-2020	[Download]
UTRED30-WIFI-AGA1001142ZT Started 31...	01:49 PM - 12-31-2019	[Download]

Model	Device Name	Serial Number	Last Connection
TRD30-7R	TRD30-7R	S/N:1050021522	02:39 PM - 02-19-2020
TRD30-16R	6061019642	S/N:6061019642	02:40 PM - 02-19-2020
UTI-WIFI	AB8100597425	S/N:AB8100597425	02:32 PM - 02-19-2020
TREL30-16	1063001001	S/N:1063001001	11:16 AM - 02-17-2020
USRC-IM	6036008266	S/N:6036008266	03:12 PM - 12-30-2019

Note: If your logger is attached to a location, the data will be added to the location, and no data file will appear in the LogTag Drive.

