



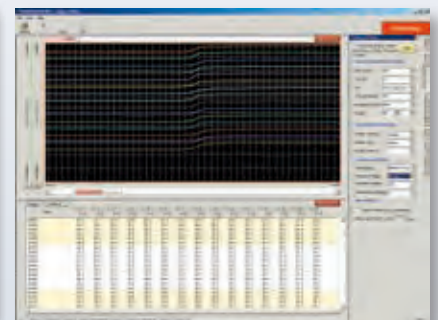
Featuring USB flash drive support and improved accuracy Your Personal 10-channel Logger



Real-time recording of up to 10ms/
sample data to USB or CF memory
devices



Small and light enough for the palm
of your hand - yet completely isolated



Logger Utility program supports
multi-channel measurements via PC

Lightest weight in its class and Easy Operation

Featuring USB flash drive support, faster performance, and more accurate thermocouple measurement



Redesigned to be even more capable, Hioki's 10-channel logger still fits in the palm of your hand.

■ ■ **Ultra-compact for convenient portability**

■ Dimensions and mass (HiLOGGER only) :
Approx. 176 mm (6.93 in) W × 101 mm (3.98 in) H × 41 mm (1.61 in) D, 550 g (19.4 oz)

■ ■ **Provides ten electrically isolated analog input channels for measuring voltage and temperature, plus four pulse-counting input channels.**

The isolated inputs alleviate constraints while minimizing interchannel interference.

■ ■ **10 ms scanning of all channels provides rapid sampling capabilities**

Track waveforms to meet demands for measuring sudden changes in loads

■ ■ **Widescreen, bright LCD gives excellent viewability**

The beautiful, wide QVGA-TFT display is ideal for waveform monitoring.

Featuring USB flash drive support



The LR8431-20 can record measurement data on a USB flash drive for easy transfer to a computer. In long-term measurement applications, it can also record to reliable Compact Flash cards for increased peace of mind.

1

Replace storage media during real-time recording

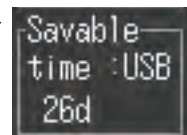
Switch out fully loaded storage media with new ones while recording without stopping the measurement so that you can analyze any data recorded so far.

Note: During high-speed recording, be sure to insert the new storage media within 2 minutes of removing the former.

2

Display remaining recording time

The LR8431-20 lets you check the remaining recording time based on the available capacity on your CF card or USB flash drive.



Setting screen

3

Load data from previous MEMORY HiLOGGER 8430-20 models

The LR8431-20 can also load waveform and settings data from previous MEMORY HiLOGGER 8430-20 models, allowing it to make measurements using the same settings and display past data.

4

Copy data between storage media

The LR8431-20 can copy recorded data between the CF card and USB flash drive.

Use only HIOKI CF cards, which are manufactured to strict industrial standards, for long-term storage of important data. Operation of non-HIOKI CF cards and USB drives is not guaranteed.

The LR8431-20 delivers improved thermocouple measurement accuracy and reference junction compensation accuracy.

Example: When measuring 50°C water with a type-K thermocouple

The LR8431-20 provides improved **accuracy of ±1.5°C**, whereas previous models provided accuracy of ±3°C.

50°C



Improved Accuracy!

Previous
MEMORY HiLOGGER
(8430-20)
±3°C

**LR8431-20
Accuracy
±1.5°C**

Evaluating motors and inverters used in electric and hybrid vehicles

The LR8431-20 enables stable, low-noise measurement of high-speed, high-resistance targets.

Efficiency measurement and performance evaluation of air conditioning equipment

The LR8431-20 supports simultaneous, multi-point measurement, for example of input and output at multiple air conditioning registers or the temperature of internal components.

Temperature measurement and performance evaluation of internal components in electronic equipment

Used with a wind velocity converter, the LR8431-20 can measure cooling efficiency inside equipment enclosures.



Isolated

10ms

10ch

This compact logger excels in a broad range of settings, from production lines to research and development.

**Key
Point**

Ten Isolated Analog Input Channels

There's no need to worry about differing potentials of measurement objects when measuring temperature and voltage. All ten analog channels are isolated. Even when measuring temperature and voltage at the same time, interchannel interference and electric shock hazards are eliminated. The four pulse channels are ideal for counting revolution pulses to measure rotation speed. (Pulse inputs share common ground.)

Note: Isolation between channels is possible through the use of semi-conductor relays. Voltage exceeding the product specifications, such as that originating from lightning surges or other sources, should never be applied between each channel; otherwise the relays will short and the recorder will be damaged.

**Key
Point**

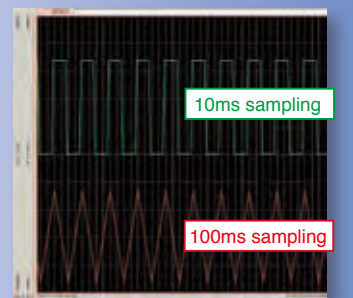
High-Speed Sampling

10 ms Sampling and Recording Across All Channels

Abrupt changes in load need to be measured during development of EV • HV • PHV, for which multi-channel, 10 ms sampling is essential. This HiLOGGER can track waveforms that could not be followed with the 100 ms sampling interval previously available.



Measurement comparison of abrupt load change in waveform with 10 ms (upper trace) and 100 ms sampling



Measurement comparison of 5 Hz square pulse waveform with 10 ms (upper trace) and 100 ms sampling

(using the supplied Logger Utility program)

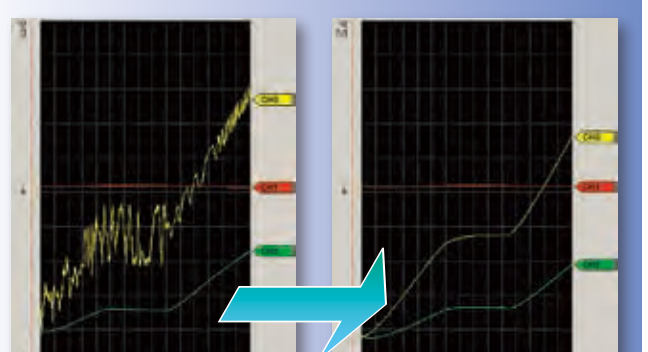
**Key
Point**

Enhanced Noise Suppression

Noise-resistant measurement circuitry for improved readings

Measurement involves the deployment of a delta-sigma type A/D converter. Suppress inverter switching noise and line-frequency hum by digital filtering with the HiLOGGER's proprietary oversampling technology.

Note: Optimum noise suppression is obtained for recordings at least two seconds long.

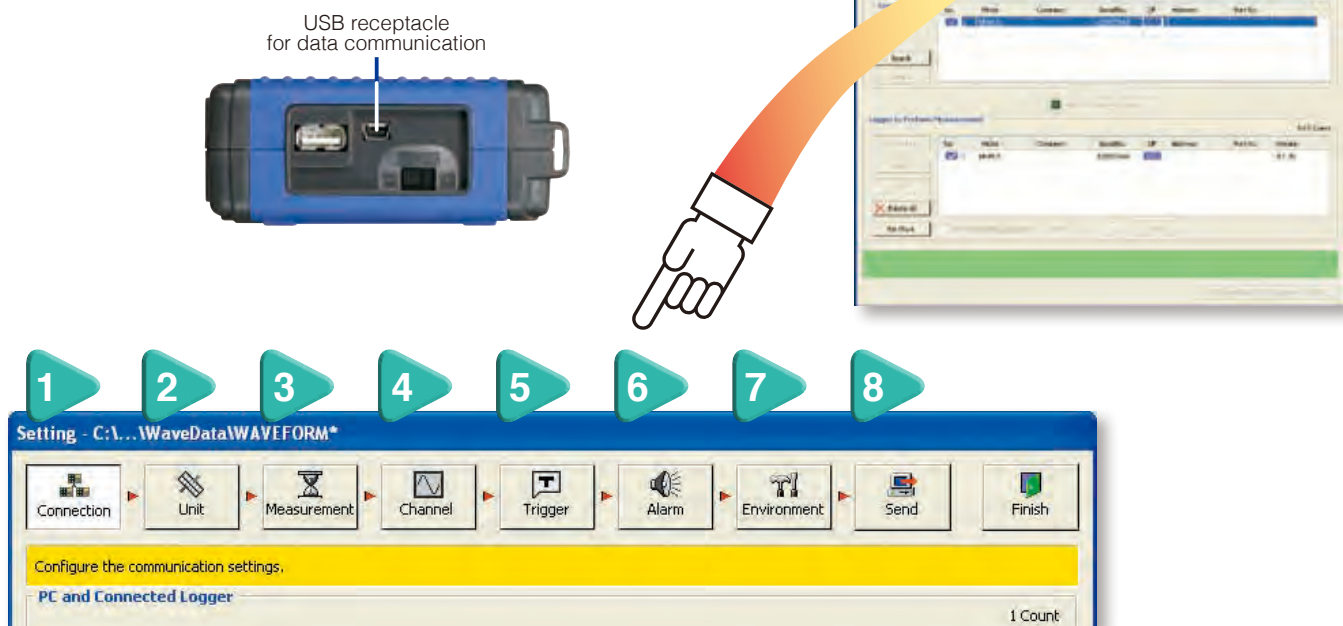


Collect data in real-time with a computer **Logger Utility** (Accessory)

The LR8431-20 ships standard with Logger Utility, a software application that supports multi-channel computer measurement. Simply connect the logger to a computer with a USB cable.

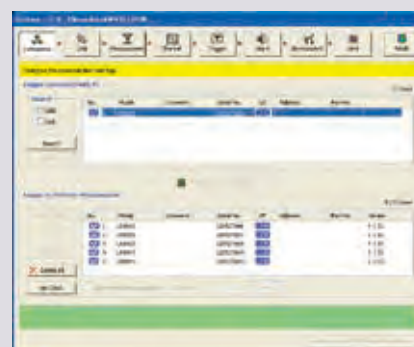
USB connection ensures easy setup

Configure HiLOGGER settings from the Logger Utility. Settings are sequentially ordered and guided from the PC application.



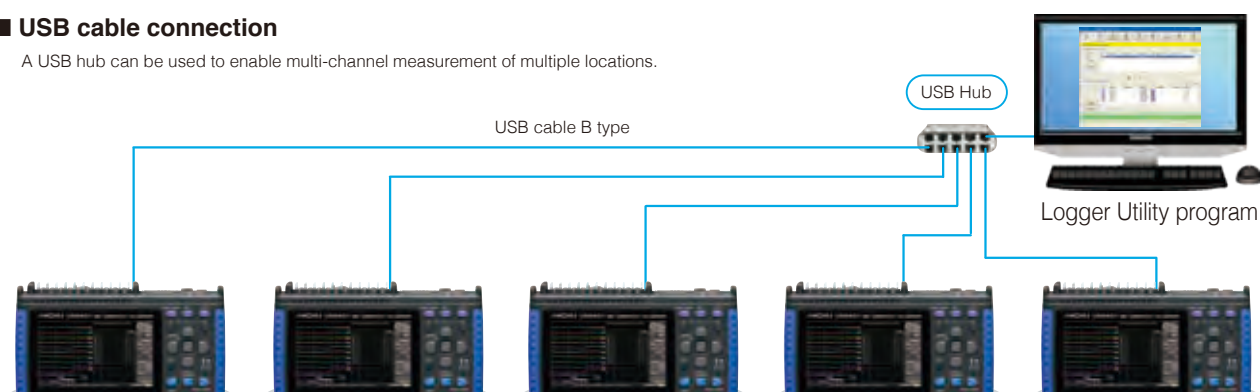
Up to five LR8431-20 instruments can be connected to a single computer with USB cables.

Providing 50 analog and 20 pulse channels that can be graphically displayed together in one window.



■ USB cable connection

A USB hub can be used to enable multi-channel measurement of multiple locations.



Collect data in real-time with a computer **Logger Utility** (Accessory)

Control measurements from the PC screen



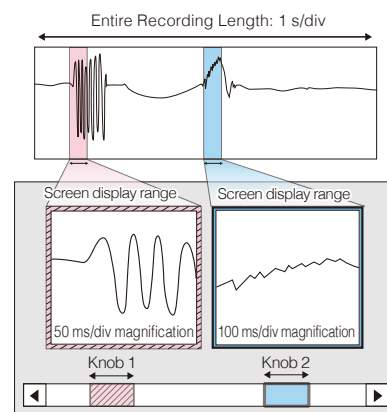
Use the supplied Logger Utility program to control real-time data recording from the PC. Scroll backward through the displayed trend graph window to view past waveforms even while recording.

Up to five LR8431-20 HiLOGGERS can be connected to one PC, providing 50 analog and 20 pulse channels that can be graphically displayed together in one window.

Patented "dual-knob function"

You can use the scrollbar to confirm what the position of the waveform portion displayed on the screen is within the whole recorded waveform.

The ability to change the time axis shown on individual windows provides a convenient way to analyze data collected over an extended period of time.



■ Logger Utility (Bundled application software)

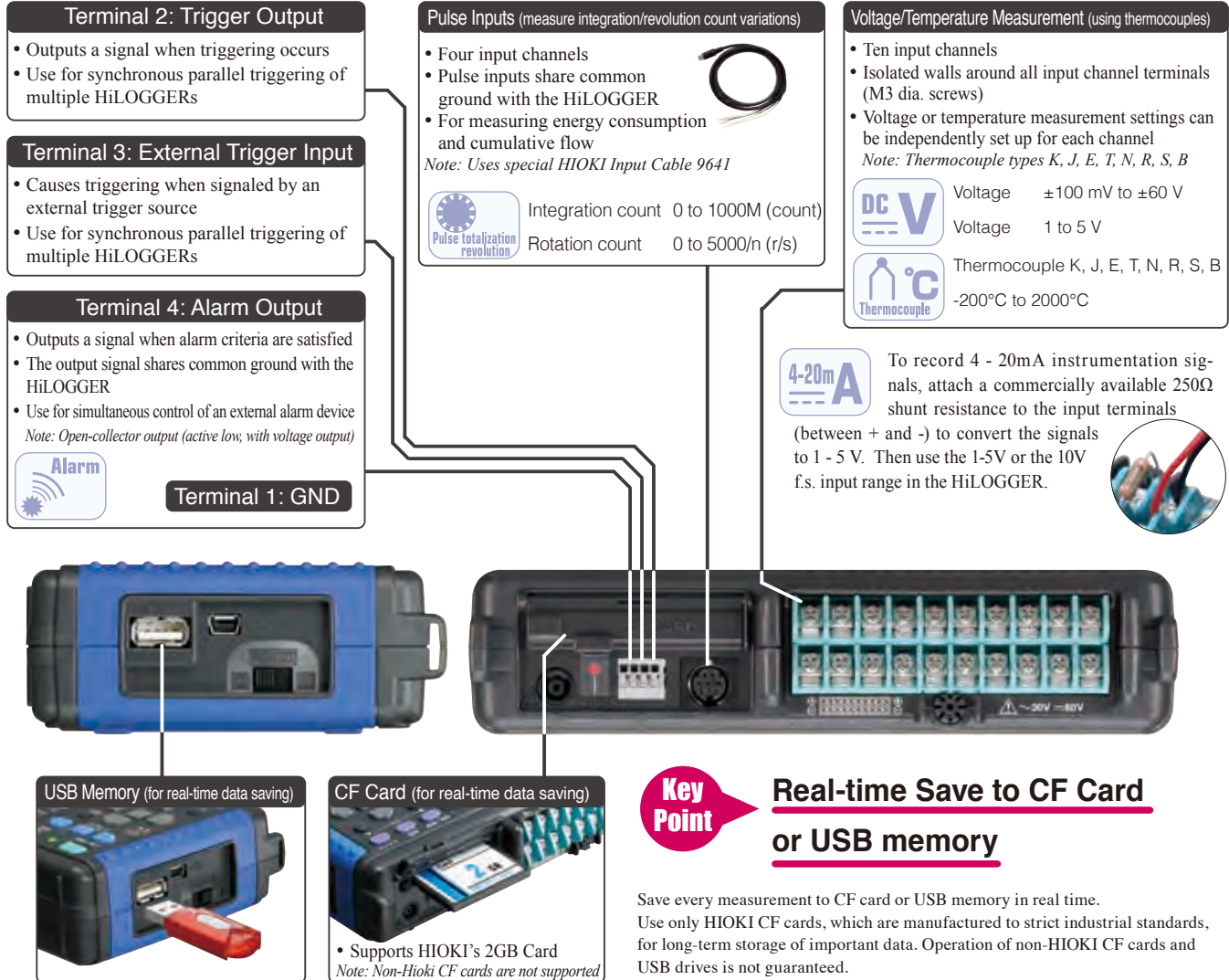
Supported units	Model 8423, LR8431, LR8410, LR8416, LR8432, LR8450, LR8450-01
Operating Environment	Windows7(32bit/64bit) Windows8(32bit/64bit) Windows10(32bit/64bit)
Overview	Control PC-connected logger to receive, display and save measured waveform data sequentially. (Total recording samples: maximum 10 million data. Data exceeding this number will be segmented into separate measurement files while recording continues.)
Function	Controllable loggers: 5 Data Collection System: 1 system Display Format: • Waveforms (split time-axis display is possible) • Numerical values (logging) Numerical display can be enlarged • Alarms Above items can be displayed simultaneously Numerical Value Monitor Display: Display in a separate window is possible. Scroll: Waveforms can be scrolled during measurement.
Data Collection	Settings: Data collection settings of logger unit can be configured Monitor function can be checked before measurement. Save: Save settings from multiple devices supporting real-time measurement (LUS format) and measurement data (LUW format) as one file. Data Save Destination: Real-time data collection file (LUW format), transfer data in real-time or non-real-time to Microsoft Excel®, Excel® template can be specified Event Mark: Recording during measurement is possible
Waveform Display	Supported Files: Waveform data file (LUW format, MEM format) Display Format: Waveforms (split time-axis display available), Simultaneous display of numerical values (logging) available Maximum Number of Channels: 2035 channels (measured) + 60 channels (waveform calculation) Waveform Display Sheets: Waveform of each channel can be displayed on any of the ten sheets Scroll: Available

Data Conversion	Applicable Files: Waveform data file (LUW format, MEM format) Conversion Section: All data, specified section Conversion Format: CSV format (comma delimited, space delimited, tab delimited), transfer to Excel® sheet, LR5000 format (hrp2.hrp) Data Thinning: Simple thinning with any thinning number
Waveform Calculation	Calculation items: Four arithmetic operations Number of calculation channel: 60 channels
Numerical Calculations	Applicable Data: Waveform data file (LUW format, MEM format), real-time measurement data, Waveform calculation Calculation Items: Average value, peak value, maximum value, time to maximum value, minimum value, time to minimum value, On time, Off time, On count, Off count, standard deviation, aggregation, area value, and integration Save calculation: Perform numerical calculation and save to file
Search	Applicable Data: Real-time data collection file (LUW format), Main unit measurement file (MEM format), Waveform calculation data Search Mode: Event mark, date and time, maximum position, minimum position, local maximum position, local minimum position, alarm position, level, window, and variation
Print	Applicable printer: Printer compatible to the OS in use Applicable data: Waveform data file (LUW format, MEM format) Print format: Waveform image, Report print, List print (Channel settings, Event, Cursor value) Print area: All area, Specified area by A-B cursor Print preview: Available

Functionality

- ▶ A variety of transducer outputs (DC voltage), or thermocouple measurements over 10 channels
- ▶ 4 Pulse (count) Input Channels, 1 Alarm Output Channel
- ▶ Real-time Save & Long-term recording to CF Card or USB memory

For more reliable data protection, we recommend use of HIOKI CF cards, which are manufactured to strict industrial standards, for real-time saving of data or long-term storage of important data. The USB communications function cannot be used while saving data to a USB flash drive. Operation of non-HIOKI CF cards is not guaranteed.



Recording Time (Save to External storage in real-time of binary data) *Note: When saving in CSV data format, total recording time is 1/10 or shorter of the following.*

Recording intervals	Recording All Channels (ten analog, four pulse and one alarm)			
	Internal memory (7 MB)	512 MB	1 GB	2 GB
10 ms	32m	1d 15h 14m	3d 06h 29m	6d 12h 58m
20 ms	1h 04m	3d 06h 29m	6d 12h 58m	13d 01h 57m
50 ms	2h 40m	8d 04h 13m	16d 08h 26m	32d 16h 53m
100 ms	5h 21m	16d 08h 26m	32d 16h 53m	65d 09h 47m
200 ms	10h 43m	32d 16h 53m	65d 09h 47m	130d 19h 35m
500 ms	1d 02h 49m	81d 18h 14m	163d 12h 29m	327d 00h 59m
1 s	2d 05h 39m	163d 12h 29m	327d 00h 59m	"★"
2 s	4d 11h 18m	327d 00h 59m	"★"	"★"
5 s	11d 04h 16m	"★"	"★"	"★"
10 s	22d 08h 33m	"★"	"★"	"★"
20 s	44d 17h 06m	"★"	"★"	"★"
30 s	67d 01h 39m	"★"	"★"	"★"
1 min	134d 03h 18m	"★"	"★"	"★"
2 min	268d 06h 36m	"★"	"★"	"★"
5 min to 1 hour	"★"	"★"	"★"	"★"

• "★" Exceeds 365 days.

1.888.610.7664

 www.calcert.com

sales@calcert.com

■ Product Specifications (Accuracy guaranteed for 1 year, Post-adjustment accuracy guaranteed for 1 year)

General specifications (product guaranteed for one year)	
Input System/ Channels	Analog inputs: 10 (M3 mm dia. screw terminal block), electrically isolated between channels, and from chassis ground. Input impedance: 1 M Ω (when voltage input or temperature measuring with thermocouple burn-out detection OFF), 800 k Ω (with thermocouple burn-out detection ON) Pulse inputs: 4 channels (requires HIOKI Input Cable 9641) <i>Note: all pulse inputs share common ground with the HiLOGGER</i>
Analog Inputs	Maximum rating: 60 V DC (max. voltage between input terminals without damage) Maximum rated voltage from isolated terminals to ground: 60 V DC (max. voltage between input channel terminals, and from terminals to chassis ground without damage)
Pulse Inputs	Input limits: 0 to +10 V DC (max. voltage between input terminals without damage), non-isolated (common ground between pulse input channels, and with chassis) Pulse signal characteristic: No-voltage relay contact "a", open collector or voltage input (High: ≥ 2.5 V, Low: ≤ 0.9 V), Period: at least 200 μ s (both high and low periods at least 100 μ s)
Alarm Output	One channel, non-isolated: output from external control connector (common ground) Signal criteria: configurable high/low threshold levels, enter/exit threshold window, logical sum (OR) and logical product (AND) for every input channel. Output is refreshed each time recording starts. Signal characteristic: Open-collector output (active low, with voltage output) Voltage levels: 4.0 to 5.0 V (H) and 0 to 0.5 V (L), Max. sink current: 5 mA DC, Max. applied voltage: 30 V DC
Internal storage	3.5 MWords (7 MB of two-byte data points, or four-byte pulse measurements)
External storage	CF card: CF card slot \times 1 (Up to 2GB), Data format: FAT, FAT32 USB memory: USB 2.0 High-speed capable, series mini-B receptacle, Data format: FAT, FAT32
Backup Function (@25°C)	Backup battery life for clock and settings: approx. 5 years For measurement data: 100 hours with fully charged battery pack, or for as long as AC adapter is connected
External Control Terminals	External Trigger/Event Mark input (exclusion function), Trigger Output, Alarm Output
Display type	4.3-inch WQVGA-TFT color LCD (480 \times 272 dots)
Displayable languages	English, Japanese
External Interface	One USB 2.0 series mini B receptacle Functions: Control from a PC (Ver 1.00 or later), Transfers internal data on the CF card to a PC
Environmental conditions (no condensation)	Temperature and humidity range for use: 0°C to 40°C (32°F to 104°F), (or 5°C to 30°C, 41°F to 86°F when battery charging), 80% rh or less Temperature and humidity range for storage: -10°C to 50°C (14°F to 122°F), 80% rh or less
Compliance standard	Safety: EN61010, EMC: EN61326, EN61000
Power Sources	(1) 100 to 240 V AC, 50/60 Hz using AC ADAPTER Z1005 (2) BATTERY PACK 9780 (when used with the AC Adapter, the AC Adapter has priority) (3) 12 V battery (10 to 16 V DC \pm 10%, Please contact HIOKI for connection cord)
Power Consumption	10 VA
Continuous Operating Time	Approx. 2.5 hours (with Battery Pack Model 9780 while saving to the CF card) Charging time: Approx. 200 minutes (@5°C to 30°C ambient)
Dimensions and mass	Approx. 176 mm (6.93 in) W \times 101 mm (3.98 in) H \times 41 mm (1.61 in) D, 550 g (19.4 oz) (HiLOGGER only)
Supplied Accessories	Measurement Guide \times 1, AC ADAPTER Z1005 \times 1, USB cable \times 1, CD-R (Instruction Manual, data collection software "Logger Utility") \times 1

Trigger functions	
Trigger Source (selectable for each channel)	All analog and pulse channels P1 to P4, external trigger, logical sum (OR) and product (AND) of each trigger source
External Trigger	Criteria: Short-circuit between external trigger input and ground, or voltage input (H-L transition from [3.0 – 5 V] to [0 – 0.8 V]) Pulse width: At least 1 ms (H), and 2 μ s (L) Input limits: 0 to 7 V DC
Trigger Timing	Start, Stop and Start/Stop (different trigger criteria can be set to start and stop)
Trigger Types (Analog, Pulse)	Level: Triggers when rising or falling through preset threshold Window: Triggers when entering or exiting range defined by preset upper and lower thresholds
Level Resolution	Analog: 0.025% f.s. (f.s. = 10 display divisions) Pulse: Totalization 1 count, Rotations 1/n [r.s.] (n: pulses per rotation)
Pre-trigger	Records for a specified period before triggering; can be set for real-time saving (1) Output signal at trigger occurred, (2) Output signal at start

Measurement Settings			
Recording Intervals (sampling period)	10 ms to 1 hour, 19 selections <i>Note: All input channels are scanned within each recording interval</i>		
Graph Timebase Scaling	100 ms to 1 day per division, 21 selections <i>Note: Setting is independent from the recording interval</i>		
Repeating Recording	(ON/OFF) Enable to repeat recording after the specified recording time span has elapsed		
Recording Time	Enable continuous recording ON (records until the Stop key is pressed), or disable to record for a specified time span (days, hours, minutes and seconds)		
Timer Recording	(ON/OFF) Enable to record for a specified time span, or between specified start and stop times		
Auto Saving	Waveform (Binary or CSV data): stores data to the CF card or USB memory during real-time measurement Numerical value calculations: stores calculated values to the CF card or USB memory when finished measuring <i>Note: Don't shutdown while data saving</i>		
Data Storage Methods	Each recording can be saved in a separate file Overwriting save (endless loop recording): New data overwrites the oldest data when the storage media is full Divided Saving: Enable to save data at a specified interval (days, hours and minutes) Divided Saving: Specified Time (specify a time of day at which to start saving data to files at a specified interval) <i>Note: Don't shutdown while data saving</i>		
Load Stored Data	Stored data can be recalled by the HiLOGGER in 3.5 MWord (7MB) quantities (for a single channel; less for multiple channels)		
Settable Save/Reload	Configure saving and reloading to and from CF card or USB memory or internal memory Ten types for internal memory, no limit for CF card and USB memory		
Numerical Calculations	Calculations 1 to 4, may be simultaneous Selections: average, peak, maximum and minimum values, time-to-maximum and time-to-minimum		
Selectable Filters	50Hz, 60 Hz, or OFF (digital filtering of high frequencies on analog channels)		
Channel Settings			
Channel Settings	Enable/disable measurement (ON/OFF), selectable waveform color Analog channels (10): Voltage (DC only), Temperature (thermocouple only). Thermocouple types K, J, E, T, N, R, S, B Pulse input channels (4): Count Integration or revolutions Alarm output (1): Hold/not-hold, beeper enable/disable (ON/OFF), Show/hide alarm waveform display (ON/OFF)		
Measurement parameters	Ranges	Range of Measurements	Finest Resolution
Voltage	100 mV f.s.	-100 mV to +100 mV	5 μ V
	1 V f.s.	-1 V to +1 V	50 μ V
	10 V f.s.	-10 V to +10 V	500 μ V
	20 V f.s.	-20 V to +20 V	1 mV
	100 V f.s.	-60 V to +60 V	5 mV
	1 – 5 V (Note)	1 V to 5 V	500 μ V
Accuracy: \pm 0.1 % f.s. (Note: 1 - 5V range's f.s. = 10 V)			
Measurement parameters	Ranges	Range of Measurements	Finest Resolution
Temperature (Thermocouples)	2000°C f.s.	-200°C to 2000°C	0.1°C
Temperature input ranges (JIS C 1602-1995)	(K) -200°C to 1350°C (E) -200°C to 1000°C (N) -200°C to 1300°C (S) 0°C to 1700°C	(J) -200°C to 1200°C (T) -200°C to 400°C (R) 0°C to 1700°C (B) 400°C to 1800°C	
Measurement Accuracy @23 \pm 5°C/73 \pm 9°F, 80% rh or less After 30 minutes warm-up Defined after zero adjustment has been performed	K, J, E, T, : \pm 1.0°C (-100°C or more), \pm 1.5°C (-200°C to -100°C) N : \pm 1.2°C (-100°C or more), \pm 2.2°C (-200°C to -100°C) R, S: \pm 2.2°C (300°C or more), \pm 4.5°C (0°C to 300°C) B: \pm 2.5°C (1000°C or more), \pm 5.5°C (400°C to 1000°C) Reference junction compensation [RJC] accuracy: \pm 0.5°C (horizontal placement), \pm 1°C (upright placement) Internal [RJC] (internal reference junction compensation at 0°C): Measurement accuracy = (temp. measurement accuracy) + (RJC accuracy) External [RJC] (using external junction compensation at 0°C): Measurement accuracy = temp. measurement accuracy only		
Temperature Other Functions	Thermocouple burn-out detection: ON or OFF		
Measurement parameters	Ranges	Range of Measurements	Finest Resolution
Pulse (Totalization)	1,000 M (count) f.s.	0 to 1,000 M (count)	1 (count)
Pulse (Rotations)	Totalization mode: cumulative (counts from start) Instantaneous value: instantaneous value during each recording period		
	5,000/n (r/s) f.s.	0 to 5,000/n (r/s)	1/n (r/s)
Pulse (Rotations)	Settable pulses per rotation: 1 to 1,000 ("n" above is the number of sensor output pulses per rotation)		
Slope Setting	\uparrow (count of L-to-H pulse transitions), \downarrow (count of H-to-L pulse transitions)		
Displayed Range	Specified by position, or by upper/lower display limit values (Upper/lower limit values only at Totalization mode)		
Common Channel Settings			
Scaling	Decimal (display decimal values), Exponential (display base-10 exponents), or Off Method: Ratio (set by slope and intercept), or 2-point (set by input/		

Options in Detail



Model: MEMORY HILOGGER LR8431

Model No. (Order Code) : **LR8431-20** (10 ch, English model)

Supplied Accessories:

Measurement Guide × 1, AC ADAPTER Z1005 × 1, USB cable × 1,
CD-R (Instruction Manual, data collection software "Logger Utility") × 1

Supplied Accessories



AC ADAPTER Z1005
100 to 240 V AC

Removable storage (CF card)



Supplied with
PC Card adapter

PC Card Precaution

Use only PC Cards sold by HIOKI. Compatibility and performance are not guaranteed for PC cards made by other manufacturers. You may be unable to read from or save data to such cards.

- | | |
|-------------------|-------------------|
| PC CARD 2G 9830 | (2 GB capacity) |
| PC CARD 1G 9729 | (1 GB capacity) |
| PC CARD 512M 9728 | (512 MB capacity) |

Battery Pack



Charges while installed
in the HILOGGER

BATTERY PACK 9780
Ni-MH, Charges while installed

Input cables



CONNECTION CABLE 9641
For pulse inputs, 1.5 m (4.92 ft) length

Other



To prevent damage to
the instrument's display

PROTECTION SHEET 9809
For LCD protection, pairs of additional sheets
can be purchased separately.

Case



SOFT CASE 9812
Includes space for small items,
Neoprene rubber



CARRYING CASE 9782
Includes compartment for options,
Resin coated