

# K-SERIES

THERMAL IMAGING CAMERAS



**FLIR**

1.888.610.7664

 [www.calcerc.com](http://www.calcerc.com)

[sales@calcerc.com](mailto:sales@calcerc.com)



## FLIR'S TACTICAL ADVANTAGE

Powerful FLIR K-Series fire service TICs offer new, easier ways to see more clearly in the darkest, smoke-filled environments. K-Series thermal imagers help you attack fires more strategically, stay better oriented, detect combustibles and hot spots quicker, and find victims faster. With more comprehensive situational awareness, you'll improve the safety and protection of first responders and the likelihood of success.



**K40**  
240×180  
Thermal Resolution



**K50**  
320×240  
Thermal Resolution

### FLIR K-SERIES CAMERAS FEATURE:

- A large 4" extra-bright color LCD
- Five imaging modes and digital zoom
- In-camera image storage up to 200 JPEGs
- Oversized buttons for gloved firefighters
- Higher temperature range up to 1200°F
- USB image transfer for sharing and reporting
- 2-year camera/10-year detector warranty\*
- Lighter weight at just under 2.5 pounds
- Two 4-hour batteries and 2-bay charger
- FLIR Tools reporting software

### AN EXTREMELY AFFORDABLE TIC FOR EVERY TRUCK

FLIR's broad customer and application base, rich innovation history, and manufacturing economies of scale culminate to make the K40 and K50 the most affordable high-performance TICs yet, putting more thermal imaging power into the hands of more first responders who need it.



## RECOGNIZE MORE, EASIER THAN EVER

K-Series TICs show you big, bright FLIR images and are simpler to use under challenging conditions. Five imaging options let you shift thermal sensitivity and effective temperature range modes to help speed tactical decisions and the search for survivors. And oversized buttons for gloved-handed operation make them easy to access. Plus you can save up to 200 images for in-camera review later or downloading to create reports back at the station.

Power

Mode

Zoom



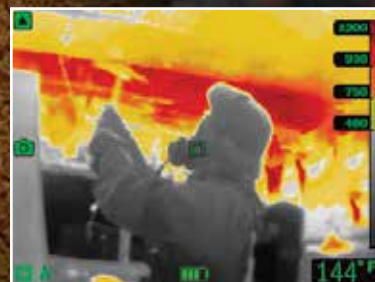
### TI BASIC MODE

For initial size-up of fire scene and fire attack.



### GRAYSCALE MODE

Similar to TI Basic mode but without colorization.



### FIRE MODE

Improved sensitivity in high scene temperatures.



### SAR MODE

Optimized palette to assist in locating subjects.



### HEAT DETECTION MODE

Hottest spots are colorized only to assist during overhaul.



**TRUCK CHARGER (OPTION)**  
Keep the camera secure and charged on apparatus.



## Specifications

SYSTEM	K40	K50
DETECTOR TYPE	240 × 180 Microbolometer	320 × 240 Microbolometer
FIELD OF VIEW	51° × 38°	
DEPTH OF FIELD	33 in. (0.84 m) to Infinity	
THERMAL SENSITIVITY/NETD	< 80 mK @ +85°F (+30°C)	
FOCAL PLANE ARRAY/SPECTRAL RANGE	Uncooled Microbolometer/7.5 – 13 μm	
USER INTERFACE		
POWER BUTTON	On/Off/Wake	
MODE BUTTON	Switches Between 5 Imaging Modes	
ZOOM BUTTON	Digital 2×	
IMAGE ARCHIVE	Access Up to 200 Stored Images from Internal Memory	
SETTINGS	Adjust Unit, Date, and Time Formats	
IMAGE PRESENTATION		
BUILT-IN DISPLAY	4 in. Color LCD Display	
IMAGE FREQUENCY	60 Hz	
IMAGING MODES	TI Basic, Grayscale, Fire, SAR, Heat Detection	
AUTO RANGE	Yes – Mode Dependent	
IMAGE STORAGE/COMMUNICATION		
CAPACITY & FORMAT	Save Up to 200 Standard IR JPEGs to the Onboard Archive	
JPEG IMAGES	Transfer Stored JPEGs to and from PC via USB Mini-B	
VIDEO STREAMING	Non-Radiometric IR Video Via USB Mini-B	
MEASUREMENT		
OBJECT TEMPERATURE RANGE	-4°F to 302°F (-20°C to 150°C); 32°F to 1202°F (0°C to 650°C)	
SPOTMETER	One Center Spot	
ISOTHERM	Per NFPA and Mode Dependent	
POWER		
BATTERY	Li-Ion, 4-Hour Operating Time Typ.	
CHARGER	2-Bay Charger (included); Truck Charger (optional)	
POWER MANAGEMENT	Automatic Sleep Mode & Shutdown	
START-UP TIME FROM SLEEP MODE	< 4 seconds	
ENVIRONMENTAL		
DESIGNED TO MEET NFPA 1801 SPECS	Vibration, Impact Acceleration Resistance, Corrosion, Viewing Surface Abrasion, Heat Resistance, Heat and Flame, Product Label Durability	
RATING	IP-67 IEC 60529	
DROP (on concrete floor)	6.6' (2.0 m) IEC 60068-2-31	
BUMP	25 g IEC60068-2-29	
OPERATING TEMP.	-4°F to 185°F (-20°C to 85°C)/500°F (260°C) – 5 Minutes	
STORAGE TEMP.	-40°F to 185°F (-40°C to 85°C)	
PHYSICAL		
WEIGHT (incl. battery)	<2.5 lbs (1.1 kg)	
SIZE (L × W × H)	4.72 × 4.92 × 11.02 in. (120 × 125 × 280 mm)	
WARRANTY	1 Yr. Standard; 2 Yr. Full Camera/10 Yr. Detector with Registration*	
PACKAGES INCLUDE:	Hard case, TIC, Power Supply, Two Batteries, 2-Bay Charger, USB Cable, Retractable Lanyard, Neck Strap, Tripod Adapter (UNC 1/4"-20), FLIR Tools Reporting Software (scratchcard), Documentation	

\*Register camera at [www.flir.com/cs/warranty](http://www.flir.com/cs/warranty) to upgrade to a 2-year parts & labor, 10-year detector warranty



PORTLAND  
Corporate Headquarters  
FLIR Systems, Inc.  
27700 SW Parkway Ave.  
Wilsonville, OR 97070  
USA  
PH: +1 877.759.8164

NASHUA

9 Townsend West  
Nashua, NH 03063  
USA  
PH: +1 877.759.8164  
PH: +1 603.324.7611

[www.flir.com/K-Series](http://www.flir.com/K-Series)  
NASDAQ: FLIR

Note: The thermal images are for illustrative purposes only, and may not have been taken by the camera depicted. Equipment described herein may require US Government authorization for export purposes. Diversion contrary to US law is prohibited.

© 2013 FLIR Systems, Inc. Specifications are subject to change without notice; check our website at [www.flir.com](http://www.flir.com). Products shown should only be used by trained and qualified individuals who have completely

1.888.610.7664



[www.calcert.com](http://www.calcert.com)

[sales@calcert.com](mailto:sales@calcert.com)