

HITEMP140-PT

HIGH TEMPERATURE DATA LOGGER

WITH 24" BENDABLE PROBE



Features

- $\pm 0.1^{\circ}\text{C}$ (0.18°F) Accuracy
- 24 inch Bendable Probe
- Operates Up To 140°C (284°F)
- Submersible (IP68)
- User Replaceable Battery
- Rugged
- Programmable start time
- Programmable stop time
- Engraved Label
- Battery Life Indicator

Benefits

- Simple Setup and Installation
- Minimal Long-Term Maintenance
- Long-Term Field Deployment

Applications

- Autoclave Verification
- Implement HACCP Programs
- Food Preparation and Processing
- Environmental Studies
- Well Monitoring
- Dishwasher Testing
- Pasteurization

The HiTemp140-PT is a submersible, temperature data logger that can operate up to 140°C (284°F) and has an accuracy of $\pm 0.1^{\circ}\text{C}$ (0.18°F). The HiTemp140-PT comes in two different probe lengths, both probe styles feature a 24 inch bendable stainless steel probe. The HiTemp140-PT-1 has a 1 inch probe tip and where the HiTemp140-PT-5 has a 5 inch probe tip. Both probes can measure extended temperatures up to 350°C (662°F) The probe is durable and can be spiraled, bent or angled in any direction, making it easy to log temperatures within bottles, vials or other hard to reach places. The HiTemp140-PT records date and time stamped readings, and has non-volatile solid state memory which retains data even if the battery becomes discharged.

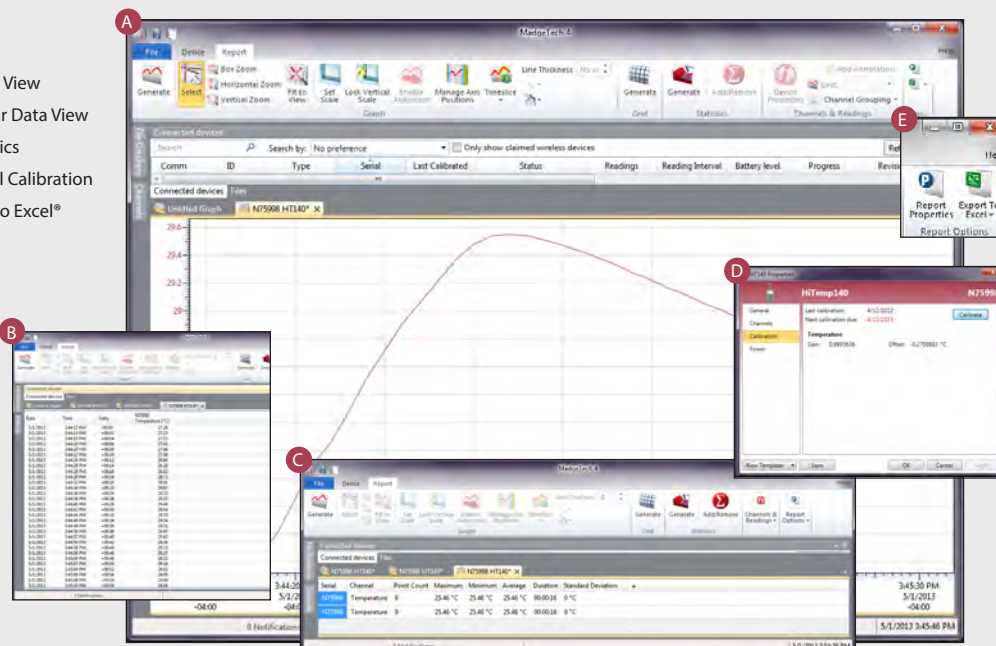
Using the latest MadgeTech Software, starting, stopping and downloading the HiTemp140-PT is simple and easy. To use, simply place the HiTemp140-PT in the IFC400 or IFC406 docking station (sold separately). Using the software, an immediate or delay start can be chosen, as well as the reading rate. Start the data logger, remove it from the docking station and the device is ready to be deployed. Graphical, tabular and summary data is provided for analysis and data can be viewed in $^{\circ}\text{C}$, $^{\circ}\text{F}$, K or $^{\circ}\text{R}$. The data can also be automatically exported to Excel[®] for further calculations.



MADGETECH DATA LOGGER SOFTWARE

Key

- A** Graph View
- B** Tabular Data View
- C** Statistics
- D** Digital Calibration
- E** Copy to Excel[®]



Software Features:

- Multiple graph overlay
- Statistics
- Digital calibration
- Zoom in/ zoom out
- Lethality equations (F0, PU)
- Mean Kinetic Temperature
- Full time zone support
- Data annotation
- Min./Max./Average lines
- Data table view
- Automatic report generation
- Summary view
- Multilingual

HITEMP140-PT SPECIFICATIONS*

*SPECIFICATIONS ARE SUBJECT TO CHANGE WITHOUT NOTICE. SPECIFIC WARRANTY REMEDY LIMITATIONS APPLY.

Temperature Sensor:	100 Ω Platinum RTD
Probe Measurement Range:	-200 °C to +350 °C (-328 °F to +662 °F) *BODY OF LOGGER CANNOT EXCEED 140 °C
Temperature Resolution:	0.01 °C (0.02 °F)
Calibrated Accuracy:	± 0.1 °C/ ± 0.18 °F (20 °C to +140 °C/68 °F to +284 °F) ± 0.3 °C/ ± 0.54 °F (-20 °C to +19.99 °C/-4 °F to +67.98 °F) ± 0.4 °C/ ± 0.72 °F (-40 °C to -20.01 °C/-40 °F to -4.02 °F)
Start Modes:	<ul style="list-style-type: none"> Software programmable immediate start Delay start up to 18 months in advance
Stop Modes:	Manual or Timed (specific date and time)
Real Time Recording:	May be used with PC to monitor and record data in real time
Password Protection:	An optional password may be programmed into the device to restrict access to configuration options. Data may be read out without the password.
Memory:	32,700 readings
Wrap Around:	Yes
Reading Rate:	1 reading every second up to 1 reading every 24 hours
Battery Type:	3.6V high-temperature lithium battery included; user replaceable
Battery Life:	1 year typical (1 minute reading rate at 25 °C/77 °F)

Calibration:	Digital calibration through software
Calibration Date:	Automatically recorded within device
Data Format:	Date and time stamped °C, °F, K, °R
Time Accuracy:	± 1 minute/month at 20 °C to 30 °C (68 °F to 86 °F) (Stand alone mode)
Computer Interface:	IFC400 OR IFC406 USB docking station required; 125,000 baud
Software:	XP SP3/Vista/Windows 7/Windows 8 (MadgeTech 4 Only)
Operating Environment:	-40 °C to +140 °C (-40 °F to +284 °F), 0 %RH to 100 %RH, 0.002 PSIA to 100 PSIA *BODY OF LOGGER CANNOT EXCEED 140 °C
Dimensions (Body):	1.9 in x 0.97 in dia. (48 mm x 24.6 mm dia.)
Dimensions (PT-1 Probe):	Probe tip: 1.7 in x 0.125 in dia. (42 mm x 3.2 mm dia.) Bendable portion: 22 in x 0.062 in dia. (559 mm x 1.6 mm dia.)
Dimensions (PT-5 Probe):	Probe tip: 4.8 in x 0.125 in dia. with 1 in x 0.188 in dia. handle (121 mm x 3.2 mm dia. with 25 mm x 4.8 mm dia. handle) Bendable portion: 22 in x 0.062 in dia. (559 mm x 1.6 mm dia.)
Weight:	4.2 oz (120 g)
Material:	316 Stainless Steel
Approvals:	CE

BATTERY WARNING: WARNING: FIRE, EXPLOSION, AND SEVERE BURN HAZARD. DO NOT SHORT CIRCUIT, CHARGE, FORCE OVER DISCHARGE, CRUSH, PENETRATE, OR INCINERATE. BATTERY MAY LEAK OR EXPLODE IF HEATED ABOVE 150 °C (302 °F).