



ESM750S

750 lbF [3.4 kN]
14.2 in [360 mm] travel

ESM1500

1,500 lbF [6.7 kN]
32 in [813 mm] travel

ESM1500S

1,500 lbF [6.7 kN]
14.2 in [360 mm] travel

ESM1500 and ESM750 single-column force testers are highly configurable solutions for tension and compression measurement applications, with capacities of 1,500 lbF (6.7 kN) and 750 lbF (3.4 kN), respectively. With generous travel and clearance, they are suitable for break testing, cycling, limit testing to a load or distance, loadholding, elongation testing, tensile testing, compression testing, and more.

Satisfy various test methods through an intuitive menu with selectable test parameters, such as speed, number of cycles, etc. Up to 50 profiles may be saved and password protected. Crosshead positioning for sample setup is a breeze with available FollowMe®. Using your hand as your guide, push and pull on the load to move the crosshead at a dynamically variable speed.

The stands feature a unique modular controller function platform. Functions such as travel measurement, cycling, etc. are offered individually, accommodating a wide range of budgets and applications.

Collect force and travel data, plot and analyze results, and control test stand motion via MESUR® gauge Plus software. Or, fully control the stand by a PC through a custom application.

Standard Features

- Broad force range and clearance dimensions
- Compatible with load cells and force gauges
- USB output of force vs. time or force vs. distance
- Adjustable, removal control panel with intuitive menu navigation
- Unique modular function platform - select functions as required for the application
- Password protection of test parameters
- Stepper motor-driven, producing smooth and quiet operation with no speed variation under load
- Compact footprint, suitable for crowded workbenches
- Most electronics are housed in an integrated removeable enclosure, easily accessed for service



Mark-10 Corporation ■ www.mark-10.com ■ info@mark-10.com
Toll-free: 888-MARK-TEN ■ Tel: 631-842-9200 ■ Fax: 631-842-9201



Key Features and Options



FollowMe® dynamic positioning

Using your hand as your guide, push and pull on the load cell or force gauge to move the crosshead. Responsive enough for quick positioning as well as fine adjustments.



Simple controller interface

Rugged aluminum up/down/stop keys are designed for industrial environments. *Zero Travel* and *FollowMe®* keys add convenience. Removable for remote use. See the following page for a full list of available functions.



Limit switches

Adjustable upper and lower solid state limit switches stop test stand travel with 0.001 in. [0.025 mm] repeatability.



Modular design

Most electronics are housed in an integrated enclosure, easily accessible and removable for updating and service.



Indicators

Choose from three indicator models. Consider a Model 7i or 5i to take full advantage of all test stand functions.



Series R01 force sensors (load cells)

Rugged S-beam design. Available in capacities from 50 to 2,000 lbf [250 N to 10 kN].



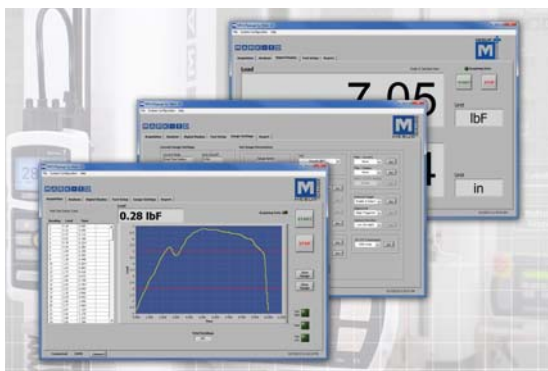
Series R03 force sensors (load cells)

Enclosed design. Available in capacities from 0.25 to 100 lbf [1 to 500 N].



Force gauges

Choose from several gauge series. Consider a Series 7 or 5 gauge to take advantage of all test stand functions.



PC control via MESUR® gauge Plus

Acquire data and control test stand motion simultaneously via MESUR® gauge Plus. The software tabulates and graphs data, calculates statistics, and provides reporting and output tools.



Optional mounting plate, threaded hole matrix

A matrix of #10-32 threaded holes is provided, along with a 1/2-20 center hole.



Optional mounting plate, multiple hole thread sizes

Three thread sizes are provided [#10-32, 5/16-18, and 1/2-20], along with an array of four 1/4-28 holes.

Optional Functions

Any of the below functions may be selected at time of order or activated in the field via an activation code. A complete options package is also available. The stands are supplied in Demo Mode, a 160-hour time period in which all functions are temporarily enabled.

	Part No.	Description	Requirements
FollowMe®	SF008	Crosshead movement responds to manually pushing or pulling on the force gauge shaft or load cell. Increasing force produces greater speeds. Ideal for setups and quick positioning.	- Series 7 or 5 gauge or indicator
Travel indication	SF009 (ESM1500)	Position is indicated on the control unit display, with output via USB. An internal scale utilizing Renishaw technology produces significantly higher accuracy than with conventional rotary encoder-based designs. Backlash and nonlinearity are virtually eliminated.	-
	SF009-1 (ESM1500S / ESM750S)		
Computer control	SF010	Fully control the stand and force gauge / indicator via custom-written application in any language supporting ASCII communications. Also responds to the legacy Chatillon TCD command set and legacy Nexygen TCD software (not available from Mark-10). This option is not required for MESUR™ gauge Plus software.	- Series 7 or 5 gauge or indicator - SF009 travel indication
Travel limits	SF011	The stand stops at or cycles between upper and lower travel distances.	- SF009 travel indication
Overload protection	SF012	Protects a force gauge or force sensor against overload. Also compatible with many competitors' gauges.	- Series 7 or 5 gauge or indicator
Auto return	SF013	The crosshead moves to a limit switch, force set point, travel position, or break, then stops and reverses direction at full speed to the opposite limit.	- To reverse at specified force: Series 7 or 5 gauge or indicator - To reverse at travel limit: SF011 travel limits - To reverse at break: SF019 break detection
Cycling / dwell time	SF014	Same as auto-return, but programmable up to 99,999 cycles. Programmable dwell time at upper and lower limits up to 9,999 seconds.	- Same as auto-return, at the same speed in each direction. Add SF016 for independent up and down speeds.
Independent up and down Speeds	SF016	Individually specify speeds for the up and down directions.	-
Low speed range extension	SF017	Extends the standard speed range down to 0.001 in/min (0.02 mm/min).	-
High speed range extension	SF018 SF018-1	ESM1500 / ESM1500S: Extends the max speed to 90 in (2,300 mm)/min. ESM750S: Extends the max speed to 60 in (1,525 mm)/min.	-
Break detection	SF019	Crosshead stops at a programmable drop in force.	- Series 7 or 5 gauge or indicator
Loadholding	SF020	Dynamically adjusts the crosshead position to maintain a specified load for an indefinite or specified period of time.	- Series 7 or 5 gauge or indicator - If a specified time is required, order SF014 cycling / dwell time
Preload / sample touch	SF021	Stops the crosshead and/or zeroes the travel display at an initial preload - useful in tensile, spring, elongation, and other applications.	- SF009 travel indication - Series 7 or 5 gauge or indicator
Profiles	SF022	Save and recall sets of test parameters, such as speeds, travel limits, preload, etc. Maximum of 50 profiles may be stored.	-
Complete options package	SFCOMP (ESM1500)	Includes all funtions listed above.	
	SFCOMP-1 (ESM1500S / ESM750S)	Requires a Series 7 or 5 gauge or indicator.	

Specifications

	ESM1500	ESM1500S	ESM750S
Load capacity:	1,500 lbF [6.7 kN] at < 60 in [1,525 mm]/min 1,000 lbF [4.5 kN] at > 60 in [1,525 mm]/min		750 lbF [3.4 kN] at < 35 in [900 mm]/min 500 lbF [2.3 kN] at > 35 in [900 mm]/min
Maximum travel:	32.0 in [813 mm]	14.2 in [360 mm]	
Standard speed range:	0.5 - 24 in/min [10 - 600 mm/min]		
Optional speed range:	0.001 - 90 in/min [0.02 - 2,300 mm/min]		0.001 - 60 in/min [0.02 - 1,525 mm/min]
Speed setting accuracy:	±0.2%		
Speed variation with load:	±0% [Stepper motor driven]		
Travel accuracy:	±0.002 in. per 10 in. [±0.05 mm per 250 mm]		
Travel resolution:	0.001 in [0.02 mm]		
Limit switch repeatability:	±0.001 in [0.03 mm]		
Power:	Universal input 80-240 VAC, 50/60 Hz, 450 W		Universal input 80-240 VAC, 50/60 Hz, 120 W
Weight (test stand only):	198 lb [90 kg]	160 lb [72 kg]	150 lb [68 kg]
Shipping weight:	248 lb [113 kg]	206 lb [93 kg]	196 lb [88 kg]

In The Box (ESM1500LC shown at right)

- (1) G1081 eye end
- (1) G1080 anchor pin
- (2) G1079 lock ring, 3/4-16
- (2) G1088 spanner wrench
- (1) Load cell / indicator mounting kit (-LC test stands)
- (1) Force gauge mounting kit (-FG test stands)
- (1) USB cable
- (1) Interface cable, gauge/indicator to test stand
- (4) Thumb screw for indicator / force gauge
- (1) Allen wrench set
- (1) Control panel
- (1) Control panel mounting bracket with hardware
- (1) Power cord
- (1) Resource CD



Ordering Information

Test Stands	
ESM1500LC*	Motorized test stand with force sensor / load cell mount, 1,500 lbF, 110V*
ESM1500FG*	Motorized test stand with force gauge mount, 1,500 lbF, 110V*
ESM1500SLC*	Motorized test stand with force sensor / load cell mount, 1,500 lbF, 110V*
ESM1500SFG*	Motorized test stand with force gauge mount, 1,500 lbF, 110V*
ESM750SLC*	Motorized test stand with force sensor / load cell mount, 750 lbF, 110V*
ESM750SFG*	Motorized test stand with force gauge mount, 750 lbF, 110V*
Hardware Options	
AC1054	Base plate, multiple center hole threads
AC1055	Base plate, matrix of threaded holes
Optional Functions	
SF008	FollowMe® force-based manual positioning
SF009	Travel indication, with USB output, ESM1500
SF009-1	Travel indication, with USB output, ESM1500S / ESM750S
SF010	Computer control, via USB
SF011	Programmable travel limits
SF012	Integrated overload protection
SF013	Auto return
SF014	Cycling / dwell time
SF016	Independent up and down speeds
SF017	Extended speed range, low
SF018	Extended speed range, high, ESM1500 / ESM1500S
SF018-1	Extended speed range, high, ESM750S
SF019	Break detection
SF020	Loadholding
SF021	Preload / sample touch
SF022	Profiles
SFCOMP	Complete options package, ESM1500
SFCOMP-1	Complete options package, ESM1500S / ESM750S

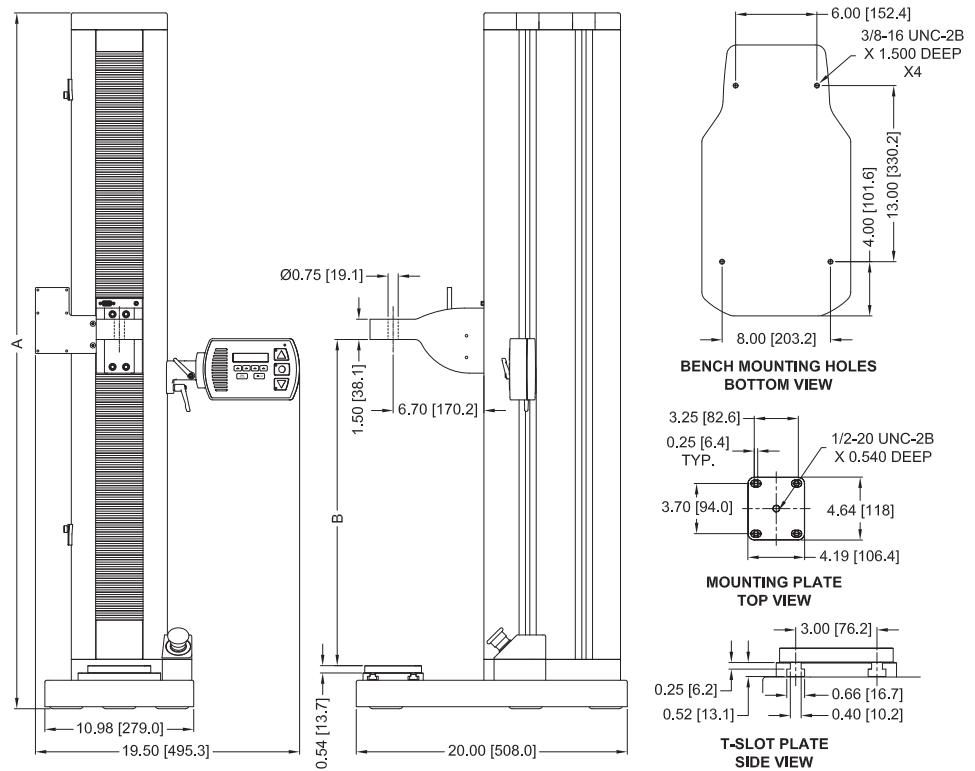
* Contains a universal power supply (80 - 240V) and includes a power cord with US plug. Add suffix 'E' for Euro plug, 'U' for UK plug, or 'A' for Australian plug. Ex: ESM1500LCE

Dimensions in (mm)

ESM1500LC ESM1500SLC ESM750SLC

(for use with an indicator and load cell)

	A	B
ESM1500LC	51.35 [1304.3]	8.13 - 40.13 [206.4 - 1019.2]
ESM1500SLC	33.89 [860.9]	8.13 - 22.33 [206.4 - 567.1]
ESM750SLC	33.39 [848.1]	8.13 - 22.33 [206.4 - 567.1]



ESM1500FG ESM1500SFG ESM750SFG

(for use with a force gauge)

	A	B
ESM1500FG	51.35 [1304.3]	5.25 - 37.25 [133.4 - 946.2]
ESM1500SFG	33.89 [860.9]	5.25 - 19.45 [133.4 - 494.0]
ESM750SFG	33.39 [848.1]	5.25 - 19.45 [133.4 - 494.0]

