

# EasyLog USB Data Loggers

## Quick Start Guide



## DOWNLOAD AND INSTALL SOFTWARE

Windows™ XP/VISTA/7/8  
(32 & 64bit)

Visit [www.easylogusb.com](http://www.easylogusb.com) and click 'Begin Software Download'.

### EL-WIN-USB Windows Control Software

EL-WIN-USB is the software platform for Lascar's standalone USB data loggers. It is compatible with 32-bit and 64-bit versions of Windows XP, Vista, 7 & 8.

The latest build of the software includes a change to use an International date format to avoid incompatibility with certain location settings when exporting data to Excel.

[Installing EL-WIN-USB on Windows](#)



Begin Software Download

Follow the instructions found in 'Installing EL-WIN-USB on Windows' (link on website).

## USING THE SOFTWARE

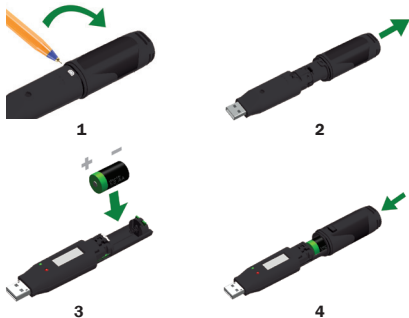
- Insert the data logger into an available USB port on your PC.
- Double click on the EasyLog USB icon on your Windows™ desktop. This will load the configuration software. Set up the data logger for a new session, download a data logger that has been recording, view previously saved data in graph format and check the current status of the attached data logger.
- When setup is complete, the data logger should be removed from the USB port. **Do not leave your data logger in the USB port for extended periods as this will cause some of the battery capacity to be lost** (with the exception of EL-USB-1-RCG).
- Full specifications on your EasyLog product, including LED and LCD status indication (where applicable), can be found on the product's datasheet at [www.lascarelectronics.com](http://www.lascarelectronics.com)
- If you would like advice on how best to use the data logger for a particular application, please contact your nearest Lascar representative. Further information can also be found in the Help Topics with in the EasyLog software.



## REPLACING YOUR DATA LOGGER'S BATTERY

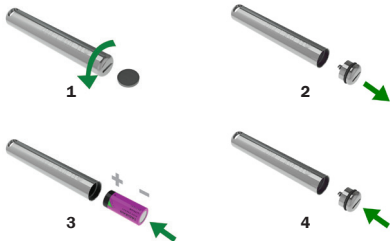
Your data logger is provided with a 3.6V 1/2AA battery already installed. You can change the battery by following the instructions below.

Replacement batteries are available from [www.lascarelectronics.com](http://www.lascarelectronics.com).



### EL-USB-1 PRO

Before using the data logger you will need to insert the 3.6V 2/3AA High Temperature battery provided, following the instructions below. Replacement batteries are available from [www.lascarelectronics.com](http://www.lascarelectronics.com), part number: BAT 3V6 2/3AA H TEMP.



### EL-USB-1-RCG

The EL-USB-1-RCG's battery is preinstalled. To charge the battery, connect to a USB port until the green LED shows. The rechargeable battery should only be replaced by an authorized supplier.

# EL-USB

Simple Low Cost Data Logging



- USB interface for configuration and download
- Easy to use Windows control software

# EL-gfx

Advanced Data Logging



- Graphic LCD for real-time readings and graph
- Compact and robust design

# EL-WiFi

Wireless Data Logging



- Cloud based monitoring with email alerts
- Connects to an existing WiFi network

For a full product data sheet for your data logger  
or for more information on the rest of the EasyLog range visit  
**[www.lascarelectronics.com](http://www.lascarelectronics.com)**

Temperature



Temperature/  
Relative Humidity



Voltage



Current



Event, State & Count



Thermocouple



Carbon Monoxide



Thermistor



## IMPORTANT SAFETY INFORMATION



### Repairing or Modifying

Never attempt to repair or modify Lascar products. Dismantling them, other than for the purpose of changing replaceable batteries, may cause damage that is not covered under the warranty. Servicing should only be provided by an authorized supplier.



### Disposal and Recycling Information

You must dispose of Lascar products in accordance with relevant laws and regulations. They contain electronic components and lithium batteries and therefore must be disposed of separately from household waste.

## NEED HELP WITH YOUR DATA LOGGER?

Contact your nearest Lascar Electronics office:



**UK**

Module House  
Whiteparish, Salisbury,  
Wiltshire SP5 2SJ  
UNITED KINGDOM  
T +44 (0) 1794 884567  
E [sales@lascar.co.uk](mailto:sales@lascar.co.uk)

**USA**

4258 West 12th Street  
Erie, PA 16505  
UNITED STATES  
T +1 (814) 835-0621  
E [us-sales@lascarelectronics.com](mailto:us-sales@lascarelectronics.com)

**HK**

8th Floor, China Aerospace Centre  
143 Hoi Bun Road  
Kwun Tong, Kowloon  
HONG KONG  
T +852 2389 6502  
E [sales@lascar.com.hk](mailto:sales@lascar.com.hk)