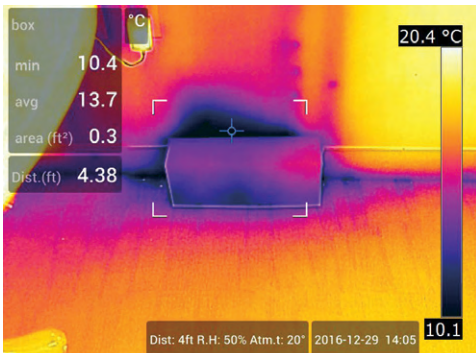




BUILDING APPLICATIONS

FLIR EXX-SERIES™

The FLIR E75, E85, E95, and the entry-level E53 Advanced Thermal Imaging Cameras bring superior sensitivity and a true 42° field of view together in a user-friendly, handheld platform. These cameras feature a vibrant 4" LCD that makes it easy to spot the subtle indications of building deficiencies and moisture intrusion. With built-in tools such as laser-assisted autofocus*, on-screen area measurement†, and Wi-Fi capability, the FLIR Exx-Series will help you quantify and document air leaks, moisture, and other building problems.



Find Hidden Deficiencies

Uncover hard-to-find building envelope deficiencies and moisture penetration

- Detects temperature differences down to 0.03°C for early identification of air leaks and moisture
- MSX® image enhancements add perspective to scenes, with edge detail on windows and doors
- The true 42° field of view (FOV) standard lens allows for surveys of wide areas with a single lens
- Measure the area (m² or ft²) of moisture intrusion on screen* with data from laser-assisted autofocus*



Document Problems Quickly

Report problems in buildings for insurance claims, pre-insurance audits, and inspections

- Built-in voice annotation and customizable work folders makes finding and documenting problems easier and more efficient
- Connect over Wi-Fi to the FLIR Tools mobile app for faster reporting and sharing of images
- Append images with FLIR moisture meter data via the METERLiNK® connection
- Streamlined reporting features through FLIR Tools+ simplifies insurance claims and inspection paperwork



Inspect More Efficiently

FLIR designed all four Exx-Series cameras to make your work faster, safer, and more efficient

- Vibrant, 4" touchscreen with 160° viewing angle
- Comfort-designed handle and convenient buttons enable safe, one-handed operation
- Rugged, water-tight chassis and scratch-resistant Dragontrail™ cover glass
- Backed by FLIR's industry-leading 2-5-10 warranty

*E75, E85, E95 models

†E85, E95 models

SPECIFICATIONS

Features By Camera	E53	E75	E85	E95
IR Resolution	240 × 180 (43,200 pixels)	320 × 240 (76,800 pixels)	384 × 288 (110,592 pixels)	464 × 348 (161,472 pixels)
UltraMax®	—	307,200 pixels	442,368 pixels	645,888 pixels
Object Temperature Range	-20°C to 120°C (-4°F to 248°F) 0°C to 650°C (32°F to 1200°F)	-20°C to 120°C (-4°F to 248°F) 0°C to 650°C (32°F to 1200°F) Optional 300°C to 1000°C (572°F to 1830°F)	-20°C to 120°C (-4°F to 248°F) 0°C to 650°C (32°F to 1200°F) 300°C to 1200°C (572°F to 2192°F)	-20°C to 120°C (-4°F to 248°F) 0°C to 650°C (32°F to 1200°F) 300°C to 1500°C (572°F to 2732°F)
Focus	Manual	Continuous, one-shot laser distance meter (LDM), one-shot contrast, manual	Continuous, one-shot laser distance meter (LDM), one-shot contrast, manual	Continuous, one-shot laser distance meter (LDM), one-shot contrast, manual
Time-lapse (Infrared)	—	—	—	10 sec to 24 hours
Laser Area Measurement	—	—	Yes	Yes
Laser Distance Measurement	—	Yes, on-screen	Yes, on-screen	Yes, on-screen
Measurement Presets	No measurement, center spot, hot spot, cold spot, 3 spots, hot spot-spot*	No measurement, center spot, hot spot, cold spot, User Preset 1, User Preset 2	No measurement, center spot, hot spot, cold spot, User Preset 1, User Preset 2	No measurement, center spot, hot spot, cold spot, User Preset 1, User Preset 2
Spotmeter	3 in live mode	1 in live mode	3 in live mode	3 in live mode
Area	1 in live mode	1 in live mode	3 in live mode	3 in live mode
Picture-in-Picture	Centered infrared area on the visual image	Resizable and movable	Resizable and movable	Resizable and movable

Common Features	
Detector Type and Pitch	Uncooled microbolometer, 17 µm
Thermal Sensitivity/NETD	<0.03°C @ 30°C (86°F), 42° lens
Spectral Range	7.5 - 14.0 µm
Image Frequency	30 Hz
Field of View (FOV)	42° × 32° (10 mm lens), 24° × 18° (18 mm lens), 14° × 10° (29 mm lens)
F-Number	f/1.3
Lens Identification	Automatic
Digital Zoom	1-4x continuous
Image Presentation and Modes	
Display	4", 640 × 480 pixel touch screen LCD with auto-rotation
Digital Camera	5 MP, 53° × 41° FOV
Color Palettes	Iron, Gray, Rainbow, Arctic, Lava, Rainbow HC
Image Modes	Infrared, visual, MSX®, Picture-in-Picture
MSX®	Embosses visual details on full resolution thermal image
Measurement and Analysis	
Accuracy	±2°C (±3.6°F) or ±2% of reading for ambient temperature 15°C to 35°C (59°F to 95°F) and object temperature above 0°C (32°F)
Alarms	Moisture alarm, insulation alarm, measurement alarms
Color Alarm (Isotherm)	Above/below/interval/condensation/insulation
Compass, GPS	Yes; automatic GPS image tagging
METERLINK®	Yes; several readings
Laser Pointer	Yes; dedicated button

*Hot spot to center spot Delta measurement

Image Storage	
Storage Media	Removable SD card (8 GB)
Image File Format	Standard JPEG with measurement data included
Video Recording and Streaming	
Radiometric IR Video Recording	Real-time radiometric recording (.csq)
Non-Radiometric IR or Visual Video	H.264 to memory card
Radiometric IR Video Streaming	Yes, over UVC or Wi-Fi
Non-Radiometric IR Video Streaming	H.264 or MPEG-4 over Wi-Fi; MJPEG over UVC or Wi-Fi
Communication Interfaces	USB 2.0, Bluetooth, Wi-Fi, DisplayPort
Video Out	DisplayPort over USB Type-C
Additional Data	
Battery Type	Li-ion battery, charged in camera or on separate charger
Battery Operating Time	Approx. 2.5 hours at 25°C (77°F) ambient temperature and typical use
Operating Temperature Range	-15°C to 50°C (5°F to 122°F)
Storage Temperature Range	-40°C to 70°C (-40°F to 158°F)
Shock/Vibration/Encapsulation; Safety	25 g / IEC 60068-2-27, 2 g / IEC 60068-2-6, IP 54 / IEC 60529; EN/UL/CSA/PSE 60950-1
Weight/Dimensions	1 kg (2.2 lbs), 27.8 × 11.6 × 11.3 cm (11.0 × 4.6 × 4.4 in)
Box Contents	
Infrared camera with lens, battery (2 ea), battery charger, front protection, straps (hand, wrist), hard transport case, lanyards, lens caps, lens cleaning cloth, power supplies, 8 GB SD card, Torx wrench, cables (USB 2.0 A to USB Type-C, USB Type-C to USB Type-C, USB Type-C to HDMI)	



The World's Sixth Sense®