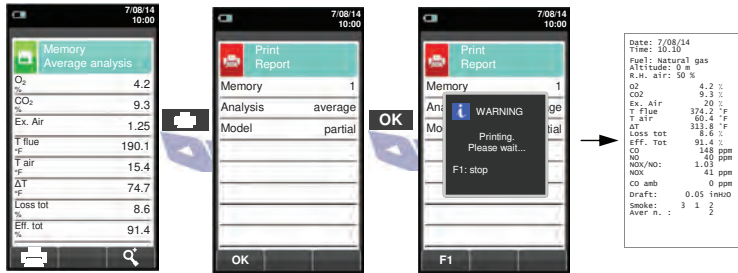


6 COMBUSTION ANALYSIS & SAVING

WARNING! - Before proceeding with the combustion analysis remember to set the proper fuel.



In case the automatic print mode is set then the average analysis printing start automatically. Conversely, after the sampling of the third analysis, the average analysis is shown, so that it can be sent to the printer as explained in the following.



• To view different test measurements, use 'F1' key to scroll through the various test measurement screens.
Xair = Excess Air
Tg = Flue Gas Stack Temperature
Ta = Ambient or Incoming Air Temperature
AT = Differential Temperature (NET Temperature)
Eff. tot = Total Combustion Efficiency
Loss tot = Stack Losses

E6000 QUICK GUIDE



Compliant with: EN 50379-1, EN 50379-2

COMPLETE MANUAL ON USB FLASH DRIVE

Features

- Combustion, Flue gas & Emissions analysis
- Calculating of stack heat loss and efficiency
- CO environment measurement
- Measuring differential pressure
- Draft measurement
- Pressure measurement in the gas supply pipe
- Store Smoke values, calculating mean value



The magnets in the back of the instrument can damage credit cards, hard drives, mechanical watches, pacemakers, defibrillators and other devices proven sensitive to magnetic fields. It is recommended to keep the instrument at a distance of at least 10" away from any of these devices.

KEYBOARD FUNCTIONS

KEYS	FUNCTION
[Up Arrow]	Activate the context keys shown on the display
[Memory Icon]	Enters the Memory menu
[Print Icon]	Enters the Print menu
[Configuration Icon]	Enters the Configuration menu
[Left Arrow]	Previes the combustion analysis
[Measurements Icon]	Enters the measurements menu
[Power Icon]	Turns the instrument on/off
[Esc]	Quits the current screen
[Directional Pad]	Selects and/or modifies
[OK]	Confirms data

CONTEXT KEYS

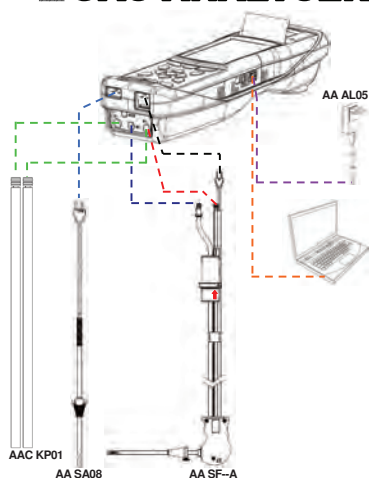
CONTEXT KEY	FUNCTION
[Zero Icon]	ZERO the pressure sensor
[Refresh Icon]	Updates the measure
[Save Icon]	Saves the current measurement or analysis in the memory location selected from the 'Select Memory' menu
[Ticket Icon]	Starts the report ticket
[Print Icon]	Enters the Print menu
[Stop Icon]	Stops the flue gas analysis
[Modify Icon]	Enters the modify mode for the selected parameter
[OK]	Confirms the settings
[Esc]	Cancel the change/operation and returns to the previous screen
[Zoom In Icon]	Zooms the screen
[Zoom Out Icon]	Shows the details for the selected parameter
[Home Icon]	'Find' function; starts a quick search for the analysis to recall

E Instruments respects the nature and the environment, therefore provides this quick user guide to avoid any unwanted waste of paper. However the complete manual for use and maintenance of the instrument is already available in the USB stick (included).
Respect your environment: think before printing the full manual on paper.



K600000000EJ 028006 020217

1 USING THE FLUE GAS ANALYSER



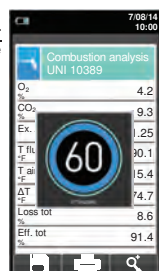
WARNING!

- Be sure all connections are tight to assure accurate sampling.
- It is important that water trap & filter be installed vertically to prevent damage from moisture & particles to sensors.
- When conducting measurements, the water trap/filter assembly **MUST** be in a VERTICAL position.
- When testing is completed, always drain the water trap with any condensation (after EVERY test!).

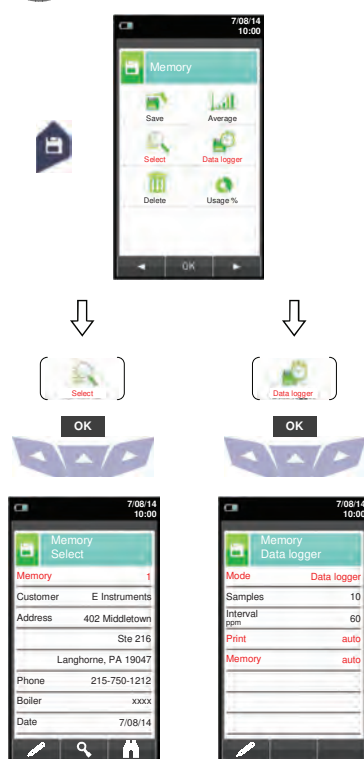
2 ON / OFF

During autozero **DO NOT** insert the gas probe in the chimney.

KEEP
PRESSED
FOR 2
SECONDS
UNTIL IT
BEEPS



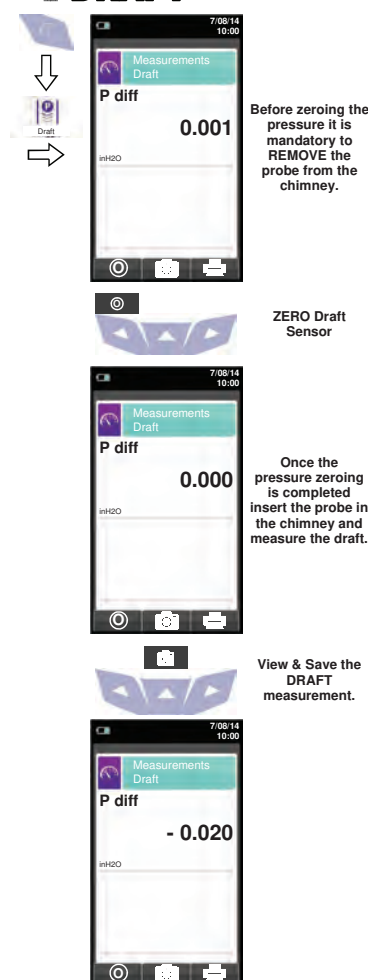
3 MEMORY



In "Select" can be inserted all the customer data.

In "Data logger", the user can define the analysis, memory selection and printing modes.

4 MEASURE OF THE DRAFT



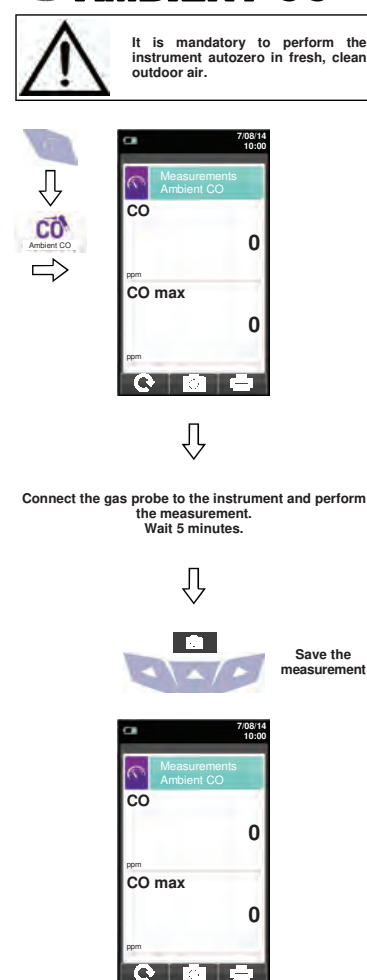
Before zeroing the pressure it is mandatory to REMOVE the probe from the chimney.

ZERO Draft Sensor

Once the pressure zeroing is completed insert the probe in the chimney and measure the draft.

View & Save the DRAFT measurement.

5 MEASURE AMBIENT CO



It is mandatory to perform the instrument autozero in fresh, clean outdoor air.



Connect the gas probe to the instrument and perform the measurement. Wait 5 minutes.



Save the measurement

K600000000EJ 028006 02017