



DLV-Pro Data Logging Voltmeter



DLV-Pro Voltmeter

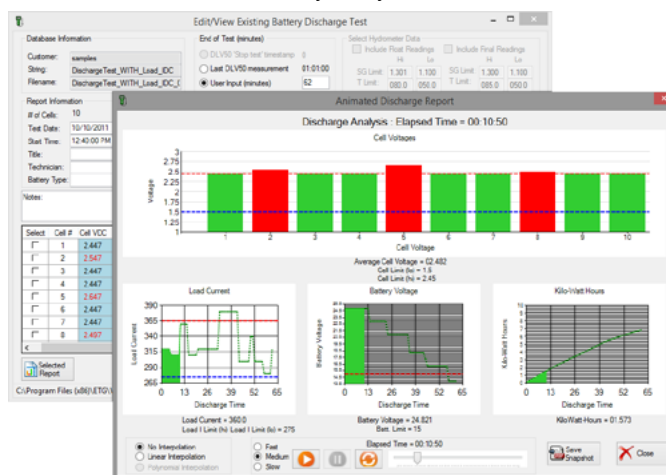
Features

- Record, view, & analyze cell voltages with statistical & graph analysis
- Targeted applications include: **Telecom, Utilities, & Motive Power**
- Optional memory configurations to best suit a variety of applications
- Perform a full battery discharge test & analyze results on-site during the test
- Upload & view measurement data from the SG-Ultra Max digital hydrometer
- Replay animated discharge tests
- Export test data to PDF reports or Excel spreadsheets

Product Overview

The **DLV-Pro Data Logging Voltmeter** automatically measures and records cell voltages in less than 1 second, enabling hundreds of cell voltage readings to be measured from a string of cells without having to write down a reading or push a button. Additionally, S.G. measurements can be uploaded directly to the unit from the Eagle Eye SG Ultra Max Digital Hydrometer for a complete battery testing solution.

The DLV-Pro can also perform a full discharge test on up to 256 cells by recording up to 11 time-stamped voltage readings for each cell, along with time-stamped load current readings (via a shunt/current probe) and initial and/or final hydrometer readings via the SG-Ultra Max. The DLV-Pro provides immediate, on-site analysis of all battery test data including threshold, statistical and graphical reporting, battery and individual cell discharge curves. Threshold limits for all modes can be set manually on the instrument or via the USB/PC interface. Test data can be uploaded to a PC using the included Winmeter 5.1 Battery Analysis Software.



Winmeter 5.1 Battery Analysis Software

Technical Specifications

| | |
|-----------------------|--|
| Measurement Range | 0 – 20 VDC |
| Accuracy | Accuracy: 0 – 4V: $\pm 5\text{mV}$ / 0 – 20V: $\pm 10\text{mV}$ Resolution: 0 – 4V: 1mV / 0 – 20V: 1mV |
| Test Speed | 1 second per cell |
| Memory Configurations | Option A: 8 Strings of 256 VDC, 8 Strings of 256 S.G., 20 Strings of 48 VDC Option B: 20 Strings of 48 VDC, 20 Strings of 48 S.G. |
| Display | 35 x 28 mm (1.4 x 1 in) color LED |
| Operating Environment | Temperature: 0 – 40 °C (32 – 104 °F) Humidity: 0 – 80% (0-31°C) / 0 – 50% (32-40°C) |
| Power Requirements | Rechargeable 3.7 V Li-ion, Approx 20 Hr |

Kit Includes

- DLV-Pro Voltmeter
- Winmeter 5.1 Battery Analysis Software
- Soft-shell Case
- Belt-clip
- Voltage Leads
- NIST Calibration Certificate
- Mini-USB Cable
- AC/DC Power Supply
- Eagle Eye USB Flash Drive

Ordering Information

| No. | Model # | Description |
|-----|---------|---|
| 1 | DLV-Pro | Data Logging Voltmeter, 0 – 20 VDC Range, Memory Option A |
| 2 | DLV-Pro | Data Logging Voltmeter, 0 – 20 VDC Range, Memory Option B |