



## D65™ FUSED CONNECTOR KIT

THIS KIT CONTAINS:

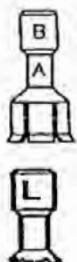
- 1 Double Line Side housing
- 1 Double Load Side housing
- 4 Socket contacts
- 1 Assembly dowel
- 1 Packet of lubricant

**! WARNING:** Improper use or installation of this product may cause fire, electrocution, serious personal injury or death. Shut off power to the circuit or remove fuse before using this product. Use only connector properly sized to the wiring being used. Consult local building codes for installation requirements.

### INSTALLATION INSTRUCTIONS

**CAUTION: Identify LINE and LOAD sides of wiring with correct molded connector bodies before installing. Use type U or LC contacts on copper wire only, type UA or LA contacts on aluminum wire only.**  
**MAXIMUM 75°C (167°F) OPERATING TEMP. 600 Volt 1/10-30 Amp UV Stabilized Material**

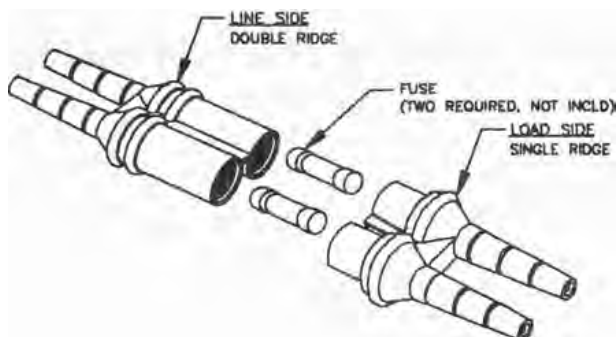
1. Determine the overall diameter of cable insulation, and from diagram on other side, select corresponding section on molded sleeve. Cut off remaining sections of housing to size required. Example: If cable O.D. is 0.270", it falls within the "C" range - cut off at notch between "B" and "C" as shown in cutaway view of assembled kit.
2. **Thoroughly clean** approximately 8" of Line Side cable to be inserted. Apply 1/4 lubricant package (do not substitute) to cable and small hole in the Line Side (receptacle) housing.
3. Insert cable through small hole in housing and push through sufficiently to allow for stripping of insulation.
4. Strip wires 3/4" for wire sizes 14 AWG through 10 AWG, 3/8" for wire sizes 8 AWG through 2 AWG (DO NOT PENCIL INSULATION). Application of Oxidation inhibitor such as Noalox® required on properly cleaned aluminum conductors. Crimp on the Line Side Socket. Make sure the stripped wire does not go beyond the end of the crimp barrel and enter the fuse socket area. (Refer to the table below for correct tool & die.) Avoid getting lubricant in the socket contacts.

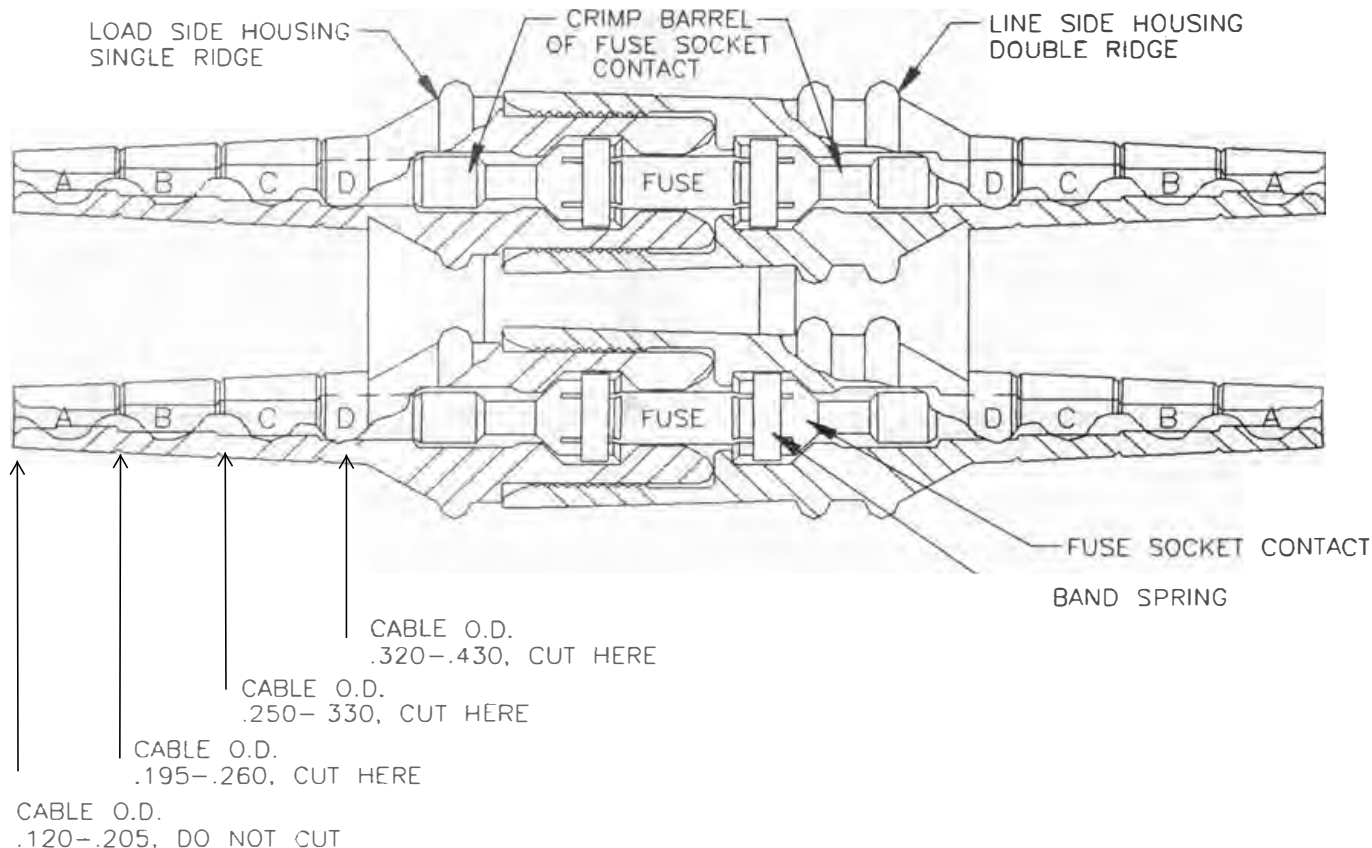


UNIVERSAL CONTACT U or UA			
CRIMP	CONDUCTOR SIZE IN AWG		RECOMMENDED CRIMP TOOLS & DIES OR DIMENSIONAL EQUIVALENT
AREA	SOLID	STRANDED	
<b>A</b>	14, 12 10, 8	14, 12 10	IDEAL No. 30-429 "BARE" IDEAL No. 30-429 "BARE"
<b>B</b>	6 4	8 6	IDEAL No. 30-425 large crimp area IDEAL No. 30-425 large crimp area
LARGE CONTACT LC OR LA			
<b>L</b>	2 -	4 2	IDEAL No. 30-425 large crimp area IDEAL No. 30-425 large crimp area

**NOTE: ALUMINUM PARTS HAVE A SCRIBED LINE ON BARREL DIAMETER - OXIDATION INHIBITOR REQD.**

5. Place wood dowel in socket. Place free end of dowel against firm surface and push housing forward until the socket contact snaps into a locked position. Repeat the above steps three more times in Line and Load Side housings. For ease of Load Side assembly, first apply a small amount of lubricant to the openings in the housing for the socket contacts.
6. Insert appropriately rated 1-1/2" x 13/32" fuses, 600 Volt - 30 Amp Max. (Do not use glass tube or indicating type), in the Load Side housing. **CAUTION: WHEN THE FUSE IS FULLY SEATED, THE END OF THE FUSE WILL PROTRUDE NO MORE THAN 5/8" PAST THE END OF THE HOUSING. DO NOT APPLY LUBRICANT ON THE FUSE.**
7. Lubricate mating rubber surfaces with lubricant supplied and plug the Load Side and Line Side housings together.  
**CAUTION: WHEN PROPERLY MATED, THE SEAM BETWEEN THE HOUSINGS SHOULD NOT EXCEED 1/32".**






### EXCERPTS OF 1996 US NEC TABLES 5 & 5A DIMENSIONS OF INSULATED CONDUCTORS

Approx. Diameter in Inches for Insulation							Approx. Diameter in Inches for Compact Al Conductors		
Size in AWG	RH	RHH, RHW, RHW-2	THW, THW-2, THHW	TW	THHN, THWN, THWN-2	XHHW, XHHW-2	THW, THHW	THHN	XHHW
14	.163	.193	.163	.133	.111	.133	—	—	—
12	.182	.212	.182	.152	.130	.152	—	—	—
10	.236	.236	.206	.176	.164	.176	—	—	—
8	.326	.326	.266	.236	.216	.236	.255	—	.224
6	.364	.364	.304	.304	.254	.274	.290	.240	.260
4	.412	.412	.352	.352	.324	.322	.335	.305	.305
3	.440	.440	.380	.380	.352	.350	—	—	—
2	.472	.472	.412	.412	.384	.382	.390	.360	.360

National Electric Code®, Copyright© 1996, National Fire Protection Association

**WARRANTY:** One-year limited warranty.

 **WARNING:** Cancer - [www.P65Warnings.ca.gov](http://www.P65Warnings.ca.gov).

CONSTRUCTION PRODUCTS  
**BUCHANAN**

 File No.  
I R9706

Noclay® is a registered trademark of IDEAL INDUSTRIES, INC.

1.888.610.7664

 [www.calcert.com](http://www.calcert.com)

[sales@calcert.com](mailto:sales@calcert.com)