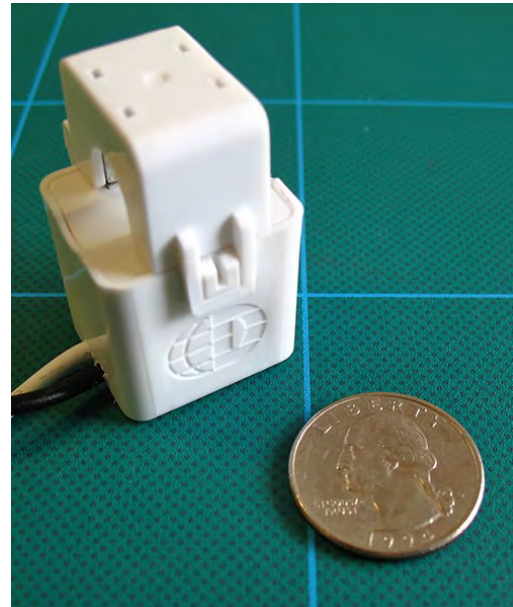


# 20A HIGH PERFORMANCE MINI CURRENT TRANSFORMERS



The hinged "Mini" CTs are small, low-cost current transformers with high accuracy (<0.5%) over a wide dynamic range with excellent phase shift. The "Minis" are ideal where space is limited such as when metering multiple loads within a panel board. Use for current measurement, energy metering, load surveys, demand metering, energy research, and submetering.



## KEY SPECIFICATIONS

Window Size	0.4" (10 mm)
Current Range*	0.25 - 40A AC
Output	333 mV @ 20A AC 16.65 mV/A AC
Ratio Error**	<0.5% from 0.25 to 40A AC (typical)
Phase Error	<1.5° from 1 to 40A AC <2° From 0.25 to 1A AC

\* Depending on meter compatibility. See ELITEpro™ and PowerScout™ specifications for details.  
\*\* For maximum performance, keep CT contact surfaces wiped clean and free of debris.

## ELECTRICAL

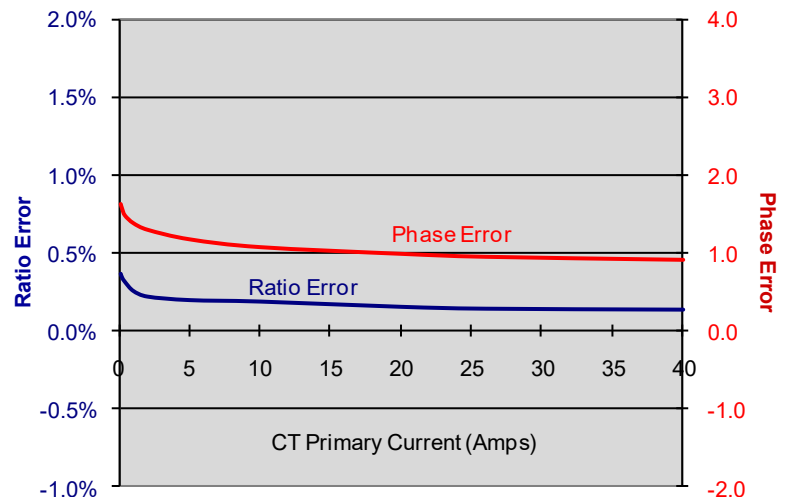
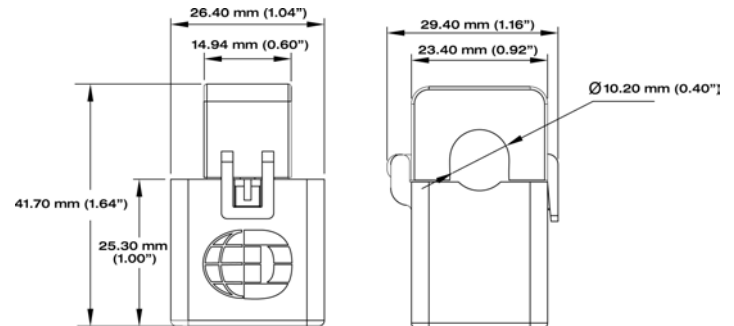
Output	333 mV @ 20 A
Wire Polarity	White = Hi, positive (+) Black = Low, negative (-)
Phasing	Arrow On Case Points
Orientation	Toward Load
Frequency Range	50 to 400 Hz

## MECHANICAL

Case Material	White Nylon, UL 94 V-0
Leads	600V, 20 gage
Working Temperature	-15 to 60°C (5 to 140°F)

## SAFETY

Working Voltage	600 VAC, Category III
Dielectric Strength	3520 VAC for 1 minute
Certifications	Conforms to: UL STD 61010-1 Certified to: CAN/CSA STD C22.2 No. 61010-1



## PART NUMBERS

	3 M Leads	7 M Leads
20A Mini Hinged CT	CT-HSC-020-U	CT-HSC-020-U-7M

## CONTACT US

DENT Instruments, Inc.  
Energy & Power Measurement Solutions



[www.calcert.com](http://www.calcert.com)

[sales@calcert.com](mailto:sales@calcert.com)

1.888.610.7664