

# ProCon® — C350 Series

## Conductivity Sensor Transmitter



**ICON**™ Corrosion-Free  
PROCESS CONTROLS Instrumentation Equipment



- ✓ Eliminate Costly Conductivity Module
- ✓ Direct to ProCon® Controller & RS485 Outputs
- ✓ Temperature Compensated
- ✓ High Accuracy
- ✓ Quick Response Time
- ✓ Factory Calibrated
- ✓ 2-Electrodes
- ✓ Conductivity | TDS | Salinity | Resistivity

### Tough but sensitive — High performance with industrial strength 316L stainless steel electrode

The ProCon® C350 series double electrode conductivity sensor transmitter has been proven to operate seamlessly in industrial applications up to 2,000µS/cm.

Measuring specific conductivity of aqueous solutions is becoming increasingly important for determining impurities in water.

The ProCon® line of analytical sensor transmitters have been designed for difficult industrial applications and to outperform even in extreme conditions.

The 4-wire or RS485 output options simplify calibration and communication with remote displays and controllers.

Always ask for **ProCon® C350** by name to be sure you are getting a genuine **Icon Process Controls** product.

### Specifications

Power Supply	9 – 36VDC
Sensor Electrode Material	316L Stainless Steel
Housing Material	316L Stainless Steel
IP Rating	IP68
Measurement Range	0 – 20µS   0 – 200µS 0 – 2,000µS
Accuracy	±1% of Reading
Pressure Resistance	80 Psi
Temperature Compensation	PT1000 (Std)
Temperature Range	32 – 266°F   0 – 130°C
Calibration	Factory Calibrated
Connection Methods	• 4-Wire (direct to ProCon® controller) • RS485
Cable Length	Flying Lead: 5m cable can be extended to 100m
Installation Thread	Sanitary Tri-Clamp



Advanced electronic circuitry for automatic sensor recognition ensuring trouble-free calibration when connected to the ProCon® controller

RS485 Direct Sensor Output

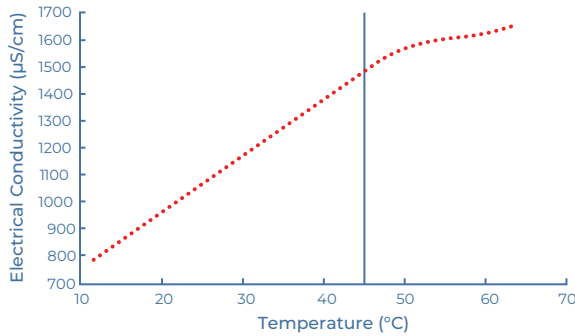


# ProCon® — C350 Series

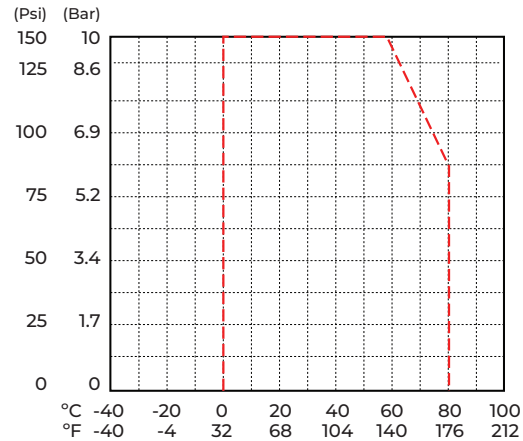
## Conductivity Sensor Transmitter



### Temperature Effects

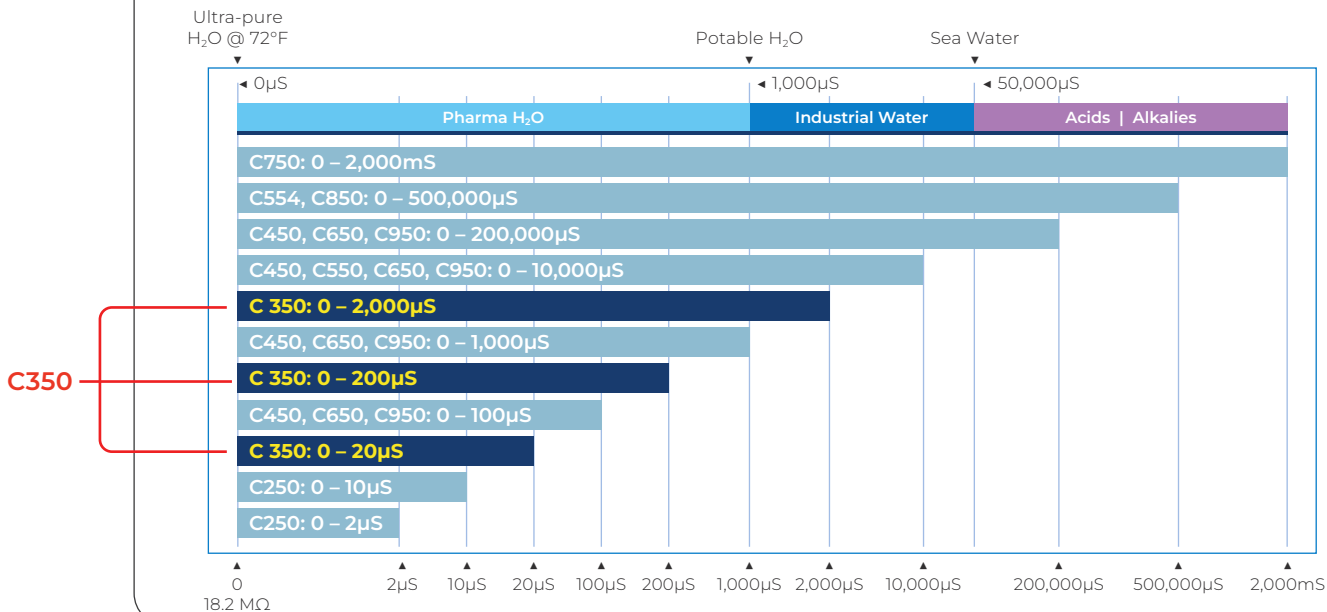


### Temperature vs. Pressure



### Factory Calibrated

ProCon® conductivity sensors come with a factory default that covers the range of the sensor



### Industrial GP Purpose

Cell	Models	Range
Cell 0.01	C250	0 – 2µS
Cell 0.01	C250	0 – 10µS
<b>Cell 0.1</b>	<b>C350</b>	<b>0 – 20µS</b>
Cell 0.01	C450, C650, C950	0 – 100µS
<b>Cell 0.1</b>	<b>C350</b>	<b>0 – 200µS</b>
Cell 0.1	C450, C650, C950	0 – 1,000µS
<b>Cell 0.1</b>	<b>C350</b>	<b>0 – 2,000µS</b>
Cell 1.0	C450, C550, C650, C950	0 – 10,000µS
Cell 10	C450, C650, C950	0 – 200,000µS
Cell 0.4	C554, C850	0 – 500,000µS
Toroidal	C750	0 – 2,000mS

### Typical Applications

- ✓ High Purity Water
- ✓ Water Treatment
- ✓ Pharmaceutical
- ✓ Food and Beverage
- ✓ Interface Detection
- ✓ Desalination
- ✓ Chemical Plants
- ✓ Aquariums
- ✓ Agricultural Industries

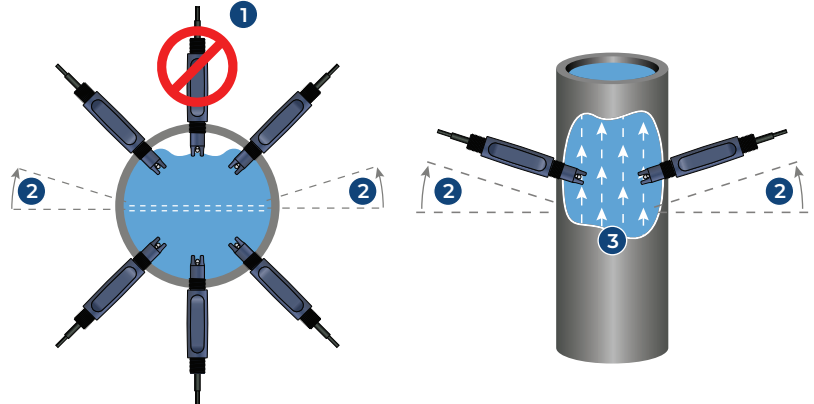
# ProCon® — C350 Series Conductivity Sensor Transmitter



**ICON™** Corrosion-Free  
PROCESS CONTROLS Instrumentation Equipment

## In-line Mounting

1. If air is present, avoid vertical installation (okay if pipe is full).
2. Optimum installation 15° above horizontal.
3. Process liquid should flow upward. (for downward flow ensure backpressure is present in order to avoid air within pipe)



## Model Selection

C350 — Sanitary Conductivity Sensor

Part Number	Size	Material	Output	Cell Constant	Range	Connection
C350-E-D-1-F-A	1"	316L SS	4-wire (for ProCon® display)	0.1	0-20μS	Flying Lead
C350-H-D-1-F-A	1"	316L SS	4-wire (for ProCon® display)	0.1	0-200μS	Flying Lead
C350-K-D-1-F-A	1"	316L SS	4-wire (for ProCon® display)	0.1	0-2,000μS	Flying Lead
C350-E-S-1-F-A	1"	316L SS	RS485	0.1	0-20μS	Flying Lead
C350-H-S-1-F-A	1"	316L SS	RS485	0.1	0-200μS	Flying Lead
C350-K-S-1-F-A	1"	316L SS	RS485	0.1	0-2,000μS	Flying Lead
C350-E-D-1-F-B	1.5"	316L SS	4-wire (for ProCon® display)	0.1	0-20μS	Flying Lead
C350-H-D-1-F-B	1.5"	316L SS	4-wire (for ProCon® display)	0.1	0-200μS	Flying Lead
C350-K-D-1-F-B	1.5"	316L SS	4-wire (for ProCon® display)	0.1	0-2,000μS	Flying Lead
C350-E-S-1-F-B	1.5"	316L SS	RS485	0.1	0-20μS	Flying Lead
C350-H-S-1-F-B	1.5"	316L SS	RS485	0.1	0-200μS	Flying Lead
C350-K-S-1-F-B	1.5"	316L SS	RS485	0.1	0-2,000μS	Flying Lead
C350-E-D-1-F-C	2"	316L SS	4-wire (for ProCon® display)	0.1	0-20μS	Flying Lead
C350-H-D-1-F-C	2"	316L SS	4-wire (for ProCon® display)	0.1	0-200μS	Flying Lead
C350-K-D-1-F-C	2"	316L SS	4-wire (for ProCon® display)	0.1	0-2,000μS	Flying Lead
C350-E-S-1-F-C	2"	316L SS	RS485	0.1	0-20μS	Flying Lead
C350-H-S-1-F-C	2"	316L SS	RS485	0.1	0-200μS	Flying Lead
C350-K-S-1-F-C	2"	316L SS	RS485	0.1	0-2,000μS	Flying Lead



by **ICON™** Corrosion-Free  
PROCESS CONTROLS Instrumentation Equipment