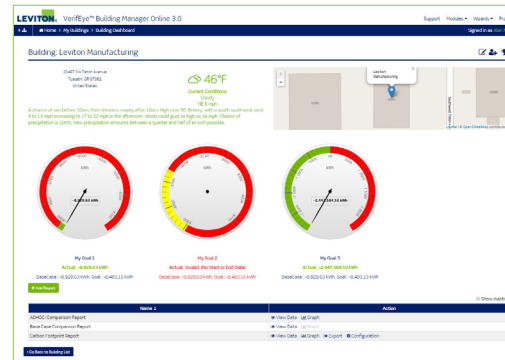


# VerifEye™ BMO 3.0

## Executive Reporting Dashboard Module

### Advanced Energy Monitoring Software & Mobile App



Dashboard Module - Gauges

#### DESCRIPTION

VerifEye™ Building Manager Online (BMO) 3.0 web-based software includes an Executive Reporting Module that displays a variety of energy data using a configurable Dashboard. Display energy usage data and cost data specific to multiple buildings and portfolios in 15-minute intervals. Generate date-based reports for any user-defined parameter including energy, demand and cost for any meter point in the local architecture. Energy goals can be set at the building or portfolio level and the system can be programmed to send alerts and alarms via email or SMS. For added flexibility, user pre-configured reports, alerts and alarms set up in the Executive Reporting Module can be accessed remotely via a mobile app on an Android® or Apple® smart device. BMO 3.0 offers several additional high performing expansion module options to provide end users with quick and easy information for code compliance and tenant billing applications.

#### APPLICATIONS

- Commercial
- Government
- Education
- Industrial
- Multiple Dwelling Units (MDUs)
- Mixed Use Buildings (Retail & Residential)

#### FEATURES

- Link multiple building profiles, view multiple buildings and portfolios on multiple Hubs
- Configure graphical Dashboard to display user defined data and periods using a wide array of graphical options
- View building information updated in 15-minute intervals—energy usage, measured parameters, cost metrics and more
- Set goals for energy usage at the building or portfolio level
- Receive alerts and alarms via email or SMS
- Upload weather information to aid in understanding energy usage patterns
- Create virtual meters to report aggregated loads for lighting, HVAC, etc.

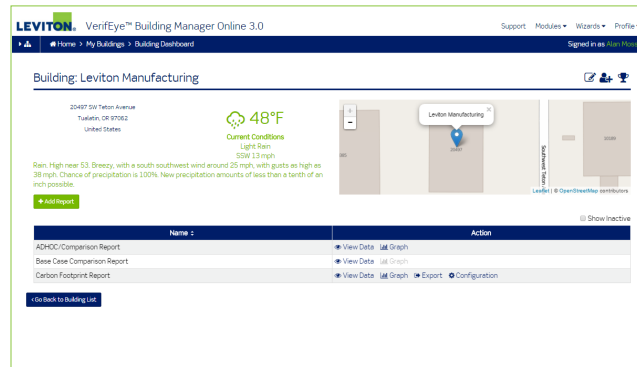
Specifications	Measurement & Verification (M&V) Software			Tenant Billing Software
	Base Module	Code Compliance Module	Executive Reporting (Dashboard) Module	Tenant Billing Module
	Web-Based Software	Web-Based Software and App	Web-Based Software and App	Web-Based Software
Primary Functions	Provides a summary of energy profiles to help identify high and low consumption as well as energy usage patterns for user defined intervals; FREE with the purchase of any VerifEye Hub	Allows end users to meet the growing requirements of local municipal codes such as the Seattle Energy Code and California Title 24 as well as versions of ASHRAE 90.1 in development	Allows executive stakeholders to readily access, understand and display energy usage and cost data specific to their facilities and portfolios in a configurable graphical Dashboard	Allows for tenant billing functionality for multi-unit buildings/facilities all across the commercial MDU market or any multi-space facility where individual tenant invoice creation is required

## PRODUCT DATA



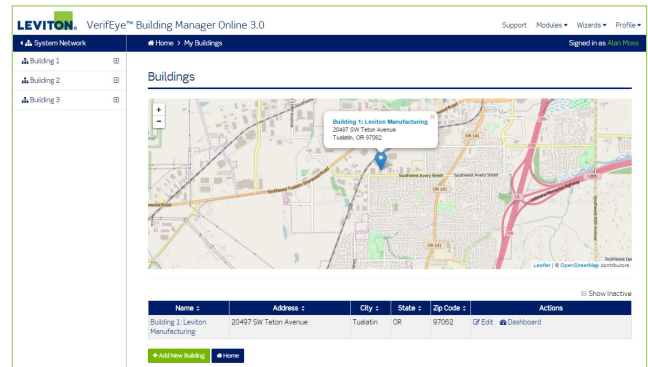
### FEATURES (continued)

- Receive push notifications via the Dashboard mobile app
- Generate date-based reports for any user defined parameter including energy, demand and cost for any meter point included in the local architecture
- Compare energy cost information
- Provides a summary of energy profiles to help identify high and low consumption as well as trending patterns for user defined intervals
- View building status, consumption and alarms
- Export energy usage data



Dashboard Module - Building Profiles

Dashboard Module - Setting Alerts



Dashboard Module - Buildings List

### ORDERING INFORMATION

CAT. NO.	DESCRIPTION
BMOSW-COD	VerifEye BMO 3.0 Code Compliance Expansion Module, Single Building Single Hub, Software & Mobile App
BMOSW-EXE	VerifEye BMO 3.0 Executive Reporting Dashboard Expansion Module, Software & Mobile App
BMOSW-BIL	VerifEye BMO 3.0 Tenant Billing Expansion Module, Software
BMOSW-MTR	VerifEye BMO 3.0 Additional 50 Meter Points
BMOSW-ADD	VerifEye BMO 3.0 Additional Buildings—Executive Reporting Dashboard and Tenant Billing Modules Only
<b>Annual Data Storage Fees (required one year after initial activation)</b>	
BMOSW-TR1	VerifEye BMO 3.0 Annual Data Storage Fees—1-50 Meter Points
BMOSW-TR2	VerifEye BMO 3.0 Annual Data Storage Fees—51-100 Meter Points
BMOSW-TR3	VerifEye BMO 3.0 Annual Data Storage Fees—101-250 Meter Points
BMOSW-TR4	VerifEye BMO 3.0 Annual Data Storage Fees—251-1,000 Meter Points
<b>BMO 3.0 Service Plans</b>	
BMOSW-LTP	VerifEye BMO 3.0 Long Term Service Plan, 12 months
BMOSW-STO	VerifEye BMO 3.0 Long Term Service Plan, 90 days