

# REOTEMP<sup>®</sup>

## INSTRUMENTS



### COMPOST PRODUCT & PRICING GUIDE



## HEAVY DUTY COMPOST THERMOMETER

The Heavy Duty Thermometer is our most popular model. Its 5/16" diameter stem and rugged all stainless design is perfect for an industrial composting facility. Add a Probe Handle for easy insertion and to protect the dial. If you need maximum protection from bending, add our Probe Guard.



**5/16" (.31") Stem Diameter**



Model #	Stem Length	Price
A24PF	2 ft.	\$ 99
A36PF	3 ft.	\$ 119
A48PF	4 ft.	\$ 159
A60PF	5 ft.	\$ 209
A72PF	6 ft.	\$ 259

Code	Range
F43	0 to 200°F
C43	0 to 100°C
D43	0 to 200°F & -10 to 90°C



MADE IN THE USA



ACCURACY

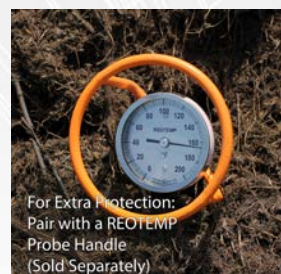


COMPATIBLE



COMPATIBLE

- Rugged All Stainless Steel Construction
- Made in the USA
- 5/16" Diameter Heavy Duty Stem
- Hermetically Sealed Dial (Won't Fog Up)
- Large & Easy-to-Read 3" Dial



For Extra Protection:  
Pair with a REOTEMP  
Probe Handle  
(Sold Separately)

## SUPER DUTY COMPOST THERMOMETER WITH FAST RESPONSE

The Super Duty Fast Response Thermometer is the best of both worlds, it's stronger and has a 20% faster response time than our heavy duty model. It's a great choice if you need extra strength and are looking to speed up the temperature collection process. Add a Probe Handle for easy insertion and to protect the dial.



**3/8" (.38") Stem Diameter  
(Stronger than Heavy Duty)**



**1/4" (.25") Tip Diameter  
(Heats Up Quicker)**

Model #	Stem Length	Price
A24FR	2 ft.	\$ 149
A36FR	3 ft.	\$ 169
A48FR	4 ft.	\$ 209
A60FR	5 ft.	\$ 259
A72FR	6 ft.	\$ 309



MADE IN THE USA



ACCURACY



COMPATIBLE

- 20% Faster Response Time
- Made in the USA
- Super Duty 3/8" Stem Diameter & Fast Response 1/4" Tip
- Stronger Stem and Durable All Stainless Steel Construction

Code	Range
F43	0 to 200°F
C43	0 to 100°C
D43	0 to 200°F & -10 to 90°C

## PROBE HANDLE

The Probe Handle is a great accessory. It gives you something to hold onto as you push the probe into the pile or pull it back out. It threads onto the back of the dial.



- Attaches to Heavy Duty or Super Duty Models
- Makes insertion and removal of probe easier
- Protects the dial

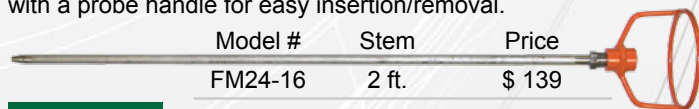
Model #	Price
FM-0	\$ 28

## PROBE GUARD

The Probe Guard is a good choice if your compost has large chunks of wood or other material which is likely to cause the stem to bend. The guard consists of a thick walled stainless steel sheath that fits tightly against the HD thermometer stem along with a probe handle for easy insertion/removal.

Model #	Stem	Price
FM24-16	2 ft.	\$ 139
FM36-16	3 ft.	\$ 149
FM48-16	4 ft.	\$ 159
FM60-16	5 ft.	\$ 169
FM72-16	6 ft.	\$ 179

For use  
with heavy  
duty models  
ONLY.



## HEAVY DUTY DIGITAL COMPOST THERMOMETER

The New REOTEMP Heavy Duty Digital Compost Probe is a high accuracy probe that features an easy-to-read digital display with integrated probe handle. This probe is well suited for larger compost piles where a more rugged probe is needed. Unlike the mechanical dial compost thermometers, the durable 5/16" stem can withstand some bending and maintain its functionality. The Heavy Duty Digital comes with a 1 Year Limited Warranty and is made in the USA. Our digital units are accurate to  $\pm 0.95^{\circ}\text{F}$  at  $131^{\circ}\text{F}$  ( $\pm 0.53^{\circ}\text{C}$  at  $55^{\circ}\text{C}$ ). The battery life is rated to 5 years.

**NEW!**



**5/16" (.31") Stem Diameter**



Model #	Stem Length	Price
DC24PF	2 ft.	\$ 289
DC36PF	3 ft.	\$ 299
DC48PF	4 ft.	\$ 309
DC60PF	5 ft.	\$ 319
DC72PF	6 ft.	\$ 329

Code	
F	-58 to 392°F
C	-50 to 200°C
DBP	Replacement Battery Pack \$10



MADE IN THE USA



HIGH ACCURACY

- Water Resistant: NEMA 4X/IP67
- High Accuracy RTD:  $\pm 0.95^{\circ}\text{F}$  at  $131^{\circ}\text{F}$
- 5 Year Battery Life
- Made in the USA
- 5/16" Diameter Heavy Duty Stem

Accuracy	$\pm 0.95^{\circ}\text{F}$ at $131^{\circ}\text{F}$
Sensor	1,000 $\Omega$ Class A RTD
Temperature Range	-58°F to 392°F (-50°C to 200°C)
Refresh	3 Seconds
Probe Material	304 Stainless Steel
Water Resistance	NEMA 4X/IP67
Power	1x 3.6V AA Battery
Battery Life	5 Years

## SUPER DUTY DIGITAL COMPOST THERMOMETER WITH FAST RESPONSE

The New REOTEMP Super Duty Digital Compost Probe with Fast Response is a high accuracy probe which features an easy-to-read digital display with integrated probe handle. The Fast Response design results in a 20% faster response time vs. the Heavy Duty model, speeding up the temperature collection process. The durable 3/8" diameter stem is thicker than the Heavy Duty model. Like the Heavy Duty model, the stem can be bent and still function. The Super Duty Digital comes with a 1 Year Limited Warranty and is made in the USA. Our digital units are accurate to  $\pm 0.95^{\circ}\text{F}$  at  $131^{\circ}\text{F}$  ( $\pm 0.53^{\circ}\text{C}$  at  $55^{\circ}\text{C}$ ). The battery life is rated to 5 years.

**NEW!**



**3/8" (.38") Stem Diameter  
(Stronger than Heavy Duty)**



Model #	Stem Length	Price
DC24FR	2 ft.	\$ 319
DC36FR	3 ft.	\$ 329
DC48FR	4 ft.	\$ 339
DC60FR	5 ft.	\$ 349
DC72FR	6 ft.	\$ 359

Code	
F	-58 to 392°F
C	-50 to 200°C
DBP	Replacement Battery Pack \$10

**1/4" (.25") Tip Diameter  
(Heats up Quicker)**



MADE IN THE USA



HIGH ACCURACY

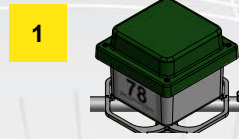
- 20% Faster Response
- Water Resistant: NEMA 4X/IP67
- High Accuracy RTD:  $\pm 0.95^{\circ}\text{F}$  at  $131^{\circ}\text{F}$
- 5 Year Battery Life
- Made in the USA
- 3/8" Diameter Super Duty Stem

Accuracy	$\pm 0.95^{\circ}\text{F}$ at $131^{\circ}\text{F}$
Sensor	1,000 $\Omega$ Class A RTD
Temperature Range	-58°F to 392°F (-50°C to 200°C)
Refresh	3 Seconds
Probe Material	304 Stainless Steel
Water Resistance	NEMA 4X/IP67
Power	1x 3.6V AA Battery
Battery Life	5 Years

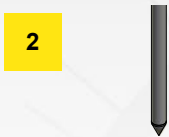
## ECOPROBE™ WIRELESS TEMPERATURE MONITORING SYSTEMS



REOTEMP's EcoProbe™ System wirelessly monitors the internal temperature of your compost piles. With over 20 years in the compost industry, REOTEMP has used its experience to design and build the most durable and reliable system on the market. The EcoProbe System reduces labor costs while increasing efficiency, product quality, and operational control. When you invest in an EcoProbe System, you ensure years of hassle-free monitoring and regulatory compliance.



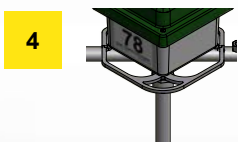
**Triple Sealed Enclosure (Super Duty):** Compost may seem like a fairly harmless media but in reality it's a very harsh and corrosive environment. REOTEMP's EcoProbes are built to last. Our unique enclosure helps probes withstand the demanding wear of a compost site. Wireless probes are subjected to large changes in temperature and (if outdoors) exposed to the weather. An improperly sealed enclosure is prone to open over time, allowing moisture and corrosive atmospheric gases to damage electronic components.



**Non-metal Stem Sheath:** When stainless steel stems are left in compost for days or weeks at a time, they are very likely to corrode and pit. In a few months, this corrosion can eat all the way through the stem and cause probe failure. To prevent this corrosion, REOTEMP has designed a unique non-metal sheath which completely encases the inner stainless steel stem. Our design prevents corrosion, while maintaining proper heat transfer.




**Customized Wireless Technology:** REOTEMP partnered with a trusted wireless company to create a reliable wireless system designed specifically for large compost sites. Utilizing our partner's 20 years of wireless design experience in locomotives, cranes, construction vehicles, and military vehicles allowed REOTEMP to develop the most reliable wireless system on the market. Our current wireless system uses custom designed radio modules and receivers, as well as site-specific antennas and the 902-928 MHz frequency. All of these components make the REOTEMP wireless system far more reliable than "off the shelf" systems some competitive probe manufacturers use.



**Roll Cage:** Our stainless steel roll cage helps protect the enclosure from the bumps and bruises that come with the real world wear and tear at an industrial compost facility. It's one of many design features that result in the most durable wireless probe on the market.



Features	Benefits	EcoProbe Super Duty	EcoProbe Medium Duty
Limited Warranty	Longest lasting, most durable wireless compost probe on the market	3 Year	1 Year
Long Battery Life	Based on a 15min sampling interval	2 year	1 year
Enclosure	Helps keep the harshest elements out of the head, for a long lasting probe at outdoor, indoor and tunnel facilities	REOTEMP Proprietary Triple Sealed Enclosure (NEMA 4X)	Single Seal Enclosure (NEMA 4X)
CPVC Sheath	Withstands even the most corrosive biosolids	✓	✓
Manufacturing	 Made in the USA	✓	✓
REOTEMP Wireless Technology	1,000ft range standard, upgrades available for longer range	✓	✓
Roll Cage	Prevents damage to the head	✓	✓
Dual Temperature Sensors	Provides a temperature profile inside the pile, with a sensor at the tip and a second sensor halfway up the stem	✓	✓
PLC System Integration	Easily integrates with Modbus, DeviceNet, Ethernet/IP	✓	✓
60" Orange Locator Flag	Prevents mishaps from losing sight of the probe	✓	✓

## ECOPROBE™ RECEIVER/ANTENNA

REOTEMP's EcoProbe™ System is customized to meet your facility's unique needs. REOTEMP's proprietary wireless system can be customized to increase transmitting power for even the largest of facilities.



Each facility has its own unique layout and setup, which means we'll need to customize the antenna we use to fit your needs. On any application, we use only high quality antennas that are above and beyond what is needed. This ensures you'll have consistent readings. It also accounts for the occasional interference typically found on composting sites (large equipment driving between probes and the receiver antenna, probes at various angles, etc.).

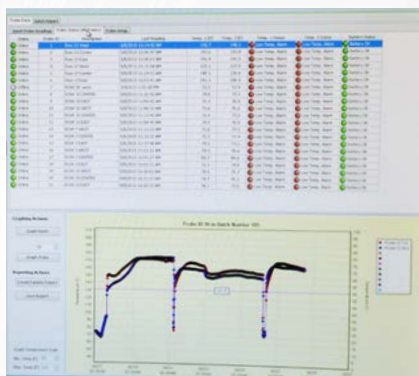


Receiver

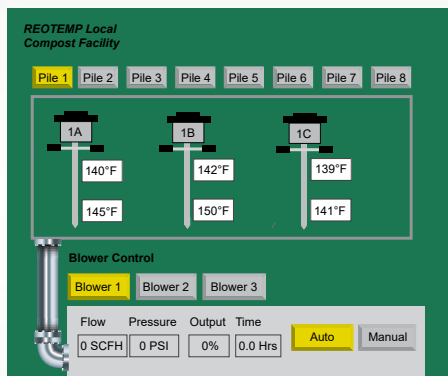
REOTEMP's Terminal Receiver organizes data packets from EcoProbes located in the field. Typically, the receiver is mounted to an internal wall of the control building. The Receiver is either hard wired into the PLC or wirelessly transmits its data to a personal computer.

## ECOPROBE™ PLC & PC SOFTWARE

For PLC systems, REOTEMP partners with a trusted 3rd party to create and customize HMI display software to your facility. For PC systems, REOTEMP offers its own windows-based software called Compost Watch™.



Compost Watch™ PC Software



Example HMI Screen for PLC System

HMI screens are created to your specifications and can include blower controls as well as automated programs.

### Compost Watch™:

- Display live temperature readings as they come in from the radio link.
- A log history of the readings that can be viewed graphically or exported into standard Windows applications such as Excel.
- Data range selector with quickset or custom date ranges.
- Low & High Temp Warnings & Alarms
- Online/Offline Indicator Light
- Battery Status Indicator Light
- Temperature Chart
- Temperature Table
- Remote access from network computers or via the internet available.



## OXYTEMP™ OXYGEN & TEMPERATURE PROBE

The OxyTemp™ allows you to take samples of air from deep within a compost pile and instantly read the % oxygen present. As an added benefit, it will simultaneously take a temperature reading. Both % oxygen and temperature are displayed on the top of the probe on two independent LCD screens. Our probe has QUICK CLEAN technology, which allows you to unclog the tip and then begin sampling again in a matter of seconds.



MADE IN THE USA

Model #	Stem Length	Price
OXYTEMP24	2 ft.	\$ 2,160
OXYTEMP36	3 ft.	\$ 2,200
OXYTEMP48	4 ft.	\$ 2,240
OXYTEMP60	5 ft.	\$ 2,280
OXYTEMP72	6 ft.	\$ 2,320

Code	
REPLYOXY	Replacement O2 Sensor \$150
REPLTIP	Replacement Tip \$60

- Oxygen & Temperature in One Probe
- Easy to Use QUICK CLEAN Feature for Clogged Tip (Patent Pending)
- Durable Stainless Steel Construction
- Replaceable Tip
- Dual Electronic Display
- Fahrenheit and Celsius Switch Selectable
- Built in Handle

Probe Material	Stainless Steel
Oxygen Range	0 to 100% Oxygen
Oxygen Accuracy	± 2% Full Scale
Oxygen Display Resolution	1%
Temp. Range	0 to 200°F and 0 to 90°C (Selectable)
Temp. Accuracy	± 2°F (1°C)
Temp. Resolution	1°
Battery	1 x 9V
Warranty	1-Year Limited
Calibration	Use black calibration knob to calibrate to 20.9% in ambient air.



## LONG STEM COMPOST MOISTURE METER



The REOTEMP Long Stem Compost Moisture Meter allows you to measure relative moisture deep within a large compost pile. The unit is user-calibrated to an "ideal" moisture level, as chosen by the user. The meter indicates relative moisture by means of a sensor at the bottom tip of the probe. The moisture meter is calibrated by inserting the tip into an "ideal" sample of compost or soil and adjusting the needle to a "5" on the 0 to 10 scale. Then, the next time you insert your moisture meter you'll know relative to your ideal moisture content whether your compost is too dry or too wet. Note: The meter does not give a percent moisture content. The meter is sensitive to changing salt content and can be used to track leachate.



Model #	Stem Length	Price
MM24	2 ft.	\$ 68
MM36	3 ft.	\$ 98
MM48	4 ft.	\$ 128
MM60	5 ft.	\$ 158

Uses	Municipalities and Large Compost Operations
Material	Stainless Steel
Probe Length	24-60"
Probe Diameter	5/16"
Power	1 AAA Battery
Scale	1-10 Relative Wetness Scale

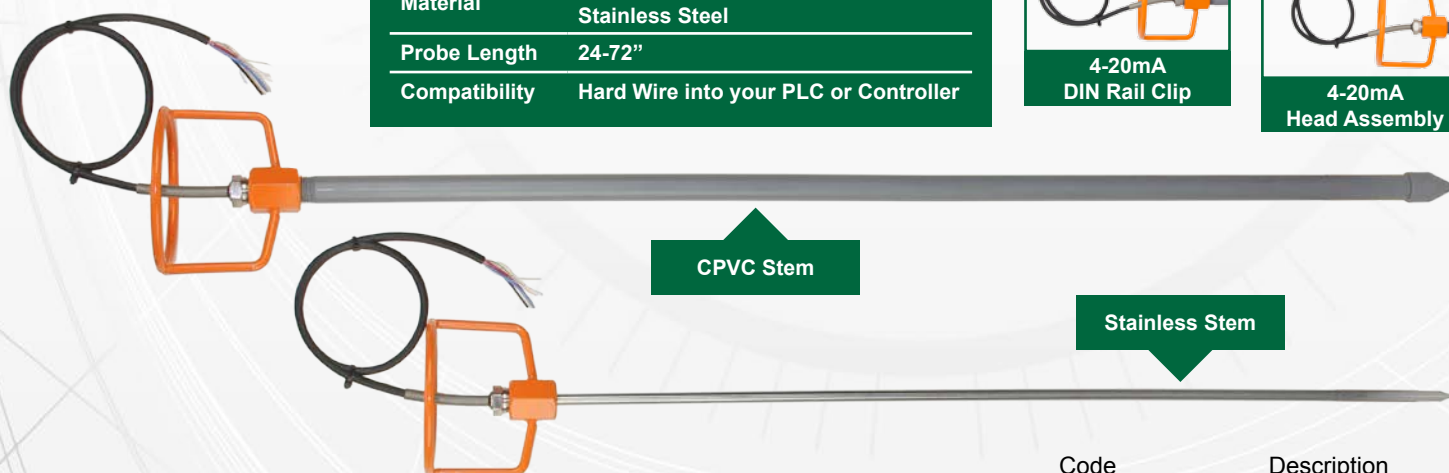
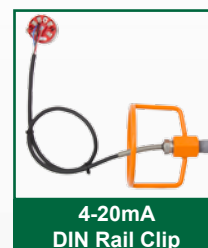
## HARD WIRED PROBES

Hard wired RTD probes use heavy duty wire to physically connect the temperature probe to your PLC or controller. These wires are often over 100 ft long. They are a good option in facilities that desire continuous monitoring at a lower cost than wireless monitoring. Our CPVC sheath protects the stem from corrosion, making it a very rugged and reliable design. A thermocouple version is also available, contact factory.

**NEW!**



Accuracy	$\pm 2^{\circ}\text{F}$ at $131^{\circ}\text{F}$ ( $\pm 1^{\circ}\text{C}$ at $55^{\circ}\text{C}$ )
Sensor	100 $\Omega$ RTD Sensor
Material	Corrosion Resistant CPVC Sheath or Stainless Steel
Probe Length	24-72"
Compatibility	Hard Wire into your PLC or Controller



CPVC Version	Stem Length	Price	Stainless Version	Stem Length	Price
HWC24CPVC??	2 ft.	\$ 239	HWC24SS??	2 ft.	\$ 209
HWC36CPVC??	3 ft.	\$ 249	HWC36SS??	3 ft.	\$ 219
HWC48CPVC??	4 ft.	\$ 259	HWC48SS??	4 ft.	\$ 229
HWC60CPVC??	5 ft.	\$ 269	HWC60SS??	5 ft.	\$ 239
HWC72CPVC??	6 ft.	\$ 279	HWC72SS??	6 ft.	\$ 249

Code	Description
??	Length of Lead wire in Feet, \$0.50 per Foot
Customer must specify a lead wire length.	
TX	4-20mA Transmitter with Head Assembly (Optional) \$150
TXC	4-20mA Transmitter with DIN rail clip (Optional) \$140

## BACKYARD COMPOST THERMOMETER



The FG20P backyard compost thermometer is perfectly designed for the home composter. It includes basic composting instructions, temperature activity ranges on the dial face, and a durable 20" stem that will reach the center of most compost piles and bins. The REOTEMP FG20P also features a thick 1/4" diameter stem for higher durability and a hermetically sealed dial to prevent fogging.

Model #	Stem Length	Temp. Range	Price
FG20P	20"	0 to 200°F	\$ 32
FG20P-C43	20"	0 to 100°C	\$ 32



Uses	Home Composting, Gardening, Schools & Community Programs
Material	Stainless Steel
Dial Marking	3 Temperature Zones
Dial Size	1.8"
Probe Length	20"
Probe Diameter	1/4"
Scale	Fahrenheit or Celsius

## BACKYARD MOISTURE METER



Used by composters, farmers, and nurseries across country, the Backyard Moisture Meter is perfect for a backyard compost pile or gardeners looking to measure the relative moisture of their soil. The unit is user-calibrated to an "ideal" moisture level, as chosen by the user. The moisture meter is calibrated by inserting the tip into an "ideal" sample of compost or soil and adjusting the needle to a "5" on the 0 to 10 scale. Note: The meter does not give a percent moisture content. The meter is sensitive to changing salt content and can be used to track leachate.

Model #	Stem Length	Price
MM17	17"	\$ 35



Uses	Home Composting, Gardening, Schools & Community Programs
Material	Stainless Steel
Probe Length	17"
Probe Diameter	5/16"
Power	1 AAA Battery
Scale	1-10 Relative Wetness Scale

## CONTACT

YouTube



Search for  
"Reotemp Compost"  
on YouTube!

**REOTEMP WARRANTY** We warrant bimetal dial compost thermometers, the digital compost thermometers (model DCXXXXX), probe guards, probe handles, moisture meters, thermocouple probes, EcoProbe™ Medium Duty probe and OxyTemp™ probes against defective materials or workmanship under normal use and service for 1 year following the date of shipment. We warrant hand held digital displays for 90 days from date of shipment. We warrant the EcoProbe™ Super Duty Probe (wireless temperature monitoring) for 3 years from the date of shipment. This warranty does not cover exposure to corrosive materials, temperatures in excess of those recommended, excessive vibration, or forces or abrasions that cause bending or unsealing of the case or stem. For United States, International and Canadian customers, the customer is responsible for the cost of shipping product(s) back to REOTEMP's factory. Upon inspection, if the product is determined to have defective materials or workmanship under normal use, then REOTEMP will repair or replace the product(s) and cover the cost of shipping back to the customer. REOTEMP guarantees the products will perform within the cataloged performance specifications if used within specified parameters. Determination of defect or failure will be made by REOTEMP or at a certified test facility. Warranty is limited to replacement of the unit or repair of the unit at the factory. This warranty is expressly in lieu of any other warranty, expressed or implied, and of all other obligations or liability on our part for damages, including but not limited to, consequential damages arising out of use or misuse of our instruments, and we neither assume nor authorize anyone to assume for us, any other liability in connection with the sale of our instruments or sensors. Suitability of the product for the customer's application rests with the customer; REOTEMP does not warranty suitability of its product(s) for the application selected by the customer. REOTEMP reserves the right to make product improvements and change product specifications at any time without notification. Please contact REOTEMP for verification of all critical dimensions and specifications.

