

CORIO CP-900F Refrigerated – Heating Circulator

Refrigerated Circulators from the CORIO CP range are suitable for applications with a temperature range up to +200°C. The enhanced pump performance ensures they are suitable for easy temperature control tasks in combination with external applications.

Your advantages

- Models for internal and external applications
- Bright, white, easy to read display
- Very quiet
- Easy pump change-over between internal and external circulation
- External pump connections
- Powerful and infinitely adjustable pressure pump
- USB connection
- RS232 interface for online communication
- Space-saving cooling coil design yields more usable space in the bath tank
- Bath lid and drain tap included
- Removable ventilation grid
- Refrigeration unit without side vents
- Class III (FL) according to DIN 12876-1



Technical data

Available voltage versions		Bath	
Order No.	9 013 706	Bath tank	Stainless steel
Available voltage versions:		Bath cover	integrated
9 013 706.02		Usable bath opening cm (W x L / D)	26 x 35 / 20
9 013 706.04			
9 013 706.05			
9 013 706.33			
9 013 706.33.chn			
Cooling		Other	
Cooling of compressor	1-stage Air	Classification	Classification III (FL)
		Pump function	Pressure Pump
		Pump type	Immersion Pump
Electronics		Dimensions and volumes	
Temperature control	PID1	Weight kg	52
Absolute temperature calibration	1 Point Calibration	Barbed fittings inner diameter	8/12 mm
Temperature display	LED	Dimensions cm (W x L x H)	39 x 62 x 75
Temperature setting	Keypad	Filling volume l	21 ... 30
Electronic Timer hr:min	0 ... 999	Pump connections	M16x1 male
Temperature values			
Working temperature range °C	-38 ... +200		
Temperature stability °C	±0.03		
Ambient temperature °C	+5 ... +40		
Temperature display resolution °C	0.01 ... 0.1		

Performance values

115V/60Hz

Heating capacity kW 1

Cooling capacity (Ethanol)

°C	20	10	0	-10	-20	-30
kW	0.9	0.85	0.8	0.52	0.31	0.11

Viscosity max. cST 50

Refrigerant R449A

Filling volume g 220

Global Warming Potential for R449A 1397

Carbon dioxide equivalent t 0.307

Pump capacity flow rate l/min 8 ... 27

Pump capacity flow pressure bar 0.1 ... 0.7

200V/50Hz

Heating capacity kW 1.5

Cooling capacity (Ethanol)

°C	20	10	0	-10	-20	-30
kW	0.9	0.85	0.8	0.52	0.31	0.11

Viscosity max. cST 50

Refrigerant R449A

Filling volume g 220

Global Warming Potential for R449A 1397

Carbon dioxide equivalent t 0.307

Pump capacity flow rate l/min 8 ... 27

Pump capacity flow pressure bar 0.1 ... 0.7

230V/50Hz

Heating capacity kW 1.8

Cooling capacity (Ethanol)

°C	20	10	0	-10	-20	-30
kW	0.9	0.85	0.8	0.52	0.31	0.11

Viscosity max. cST 50

Refrigerant R449A

Filling volume g 220

Global Warming Potential for R449A 1397

Carbon dioxide equivalent t 0.307

Pump capacity flow rate l/min 8 ... 27

Pump capacity flow pressure bar 0.1 ... 0.7

200V/50Hz

Heating capacity kW 1

Cooling capacity (Ethanol)

°C	20	10	0	-10	-20	-30
kW	0.9	0.85	0.8	0.52	0.31	0.11

Viscosity max. cST 50

Refrigerant R449A

200V/60Hz

Heating capacity kW 1.5

Cooling capacity (Ethanol)

°C	20	10	0	-10	-20	-30
kW	0.9	0.85	0.8	0.52	0.31	0.11

Viscosity max. cST 50

Refrigerant R449A

Filling volume g 220

Global Warming Potential for R449A 1397

Carbon dioxide equivalent t 0.307

Pump capacity flow rate l/min 8 ... 27

Pump capacity flow pressure bar 0.1 ... 0.7

230V/60Hz

Heating capacity kW 1.8

Cooling capacity (Ethanol)

°C	20	10	0	-10	-20	-30
kW	0.9	0.85	0.8	0.52	0.31	0.11

Viscosity max. cST 50

Refrigerant R449A

Filling volume g 220

Global Warming Potential for R449A 1397

Carbon dioxide equivalent t 0.307

Pump capacity flow rate l/min 8 ... 27

Pump capacity flow pressure bar 0.1 ... 0.7

200V/60Hz

Heating capacity kW 1.5

Cooling capacity (Ethanol)

°C	20	10	0	-10	-20	-30
kW	0.9	0.85	0.8	0.52	0.31	0.11

Viscosity max. cST 50

Refrigerant R449A

Filling volume g	220
Global Warming Potential for R449A	1397
Carbon dioxide equivalent t	0.307
Pump capacity flow rate l/min	8 ... 27
Pump capacity flow pressure bar	0.1 ... 0.7

230V/50Hz

Heating capacity kW							1
Cooling capacity (Ethanol)							
°C	20	10	0	-10	-20	-30	
kW	0.9	0.85	0.8	0.52	0.31	0.11	

Viscosity max. cST	50
Refrigerant	R449A
Filling volume g	220
Global Warming Potential for R449A	1397
Carbon dioxide equivalent t	0.307
Pump capacity flow rate l/min	8 ... 27
Pump capacity flow pressure bar	0.1 ... 0.7

200V/50Hz

Heating capacity kW							1.5
Cooling capacity (Ethanol)							
°C	20	10	0	-10	-20	-30	
kW	0.9	0.85	0.8	0.52	0.31	0.11	

Viscosity max. cST	50
Refrigerant	R449A
Filling volume g	220
Global Warming Potential for R449A	1397
Carbon dioxide equivalent t	0.307
Pump capacity flow rate l/min	8 ... 27
Pump capacity flow pressure bar	0.1 ... 0.7

230V/50Hz

Heating capacity kW							2
Cooling capacity (Ethanol)							
°C	20	10	0	-10	-20	-30	
kW	0.9	0.85	0.8	0.52	0.31	0.11	

Viscosity max. cST	50
Refrigerant	R449A
Filling volume g	220
Global Warming Potential for R449A	1397
Carbon dioxide equivalent t	0.307
Pump capacity flow rate l/min	8 ... 27
Pump capacity flow pressure bar	0.1 ... 0.7

200V/50Hz

Heating capacity kW	1.5
---------------------	-----

Filling volume g	220
Global Warming Potential for R449A	1397
Carbon dioxide equivalent t	0.307
Pump capacity flow rate l/min	8 ... 27
Pump capacity flow pressure bar	0.1 ... 0.7

230V/60Hz

Heating capacity kW							1
Cooling capacity (Ethanol)							
°C	20	10	0	-10	-20	-30	
kW	0.9	0.85	0.8	0.52	0.31	0.11	

Viscosity max. cST	50
Refrigerant	R449A
Filling volume g	220
Global Warming Potential for R449A	1397
Carbon dioxide equivalent t	0.307
Pump capacity flow rate l/min	8 ... 27
Pump capacity flow pressure bar	0.1 ... 0.7

200V/60Hz

Heating capacity kW							1.5
Cooling capacity (Ethanol)							
°C	20	10	0	-10	-20	-30	
kW	0.9	0.85	0.8	0.52	0.31	0.11	

Viscosity max. cST	50
Refrigerant	R449A
Filling volume g	220
Global Warming Potential for R449A	1397
Carbon dioxide equivalent t	0.307
Pump capacity flow rate l/min	8 ... 27
Pump capacity flow pressure bar	0.1 ... 0.7

230V/60Hz

Heating capacity kW							2
Cooling capacity (Ethanol)							
°C	20	10	0	-10	-20	-30	
kW	0.9	0.85	0.8	0.52	0.31	0.11	

Viscosity max. cST	50
Refrigerant	R449A
Filling volume g	220
Global Warming Potential for R449A	1397
Carbon dioxide equivalent t	0.307
Pump capacity flow rate l/min	8 ... 27
Pump capacity flow pressure bar	0.1 ... 0.7

200V/60Hz

Heating capacity kW	1.5
---------------------	-----

Cooling capacity (Ethanol)

°C	20	10	0	-10	-20	-30
kW	0.9	0.85	0.8	0.52	0.31	0.11

Viscosity max. cST

50

Refrigerant

R449A

Filling volume g

220

Global Warming Potential for R449A

1397

Carbon dioxide equivalent t

0.307

Pump capacity flow rate l/min

8 ... 27

Pump capacity flow pressure bar

0.1 ... 0.7

230V/50Hz

Heating capacity kW

2

Cooling capacity (Ethanol)

°C	20	10	0	-10	-20	-30
kW	0.9	0.85	0.8	0.52	0.31	0.11

Viscosity max. cST

50

Refrigerant

R449A

Filling volume g

220

Global Warming Potential for R449A

1397

Carbon dioxide equivalent t

0.307

Pump capacity flow rate l/min

8 ... 27

Pump capacity flow pressure bar

0.1 ... 0.7

Cooling capacity (Ethanol)

°C	20	10	0	-10	-20	-30
kW	0.9	0.85	0.8	0.52	0.31	0.11

Viscosity max. cST

50

Refrigerant

R449A

Filling volume g

220

Global Warming Potential for R449A

1397

Carbon dioxide equivalent t

0.307

Pump capacity flow rate l/min

8 ... 27

Pump capacity flow pressure bar

0.1 ... 0.7

230V/60Hz

Heating capacity kW

2

Cooling capacity (Ethanol)

°C	20	10	0	-10	-20	-30
kW	0.9	0.85	0.8	0.52	0.31	0.11

Viscosity max. cST

50

Refrigerant

R449A

Filling volume g

220

Global Warming Potential for R449A

1397

Carbon dioxide equivalent t

0.307

Pump capacity flow rate l/min

8 ... 27

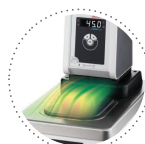
Pump capacity flow pressure bar

0.1 ... 0.7

All Benefits

**ATC.**

Absolute Temperature Calibration, 1-point calibration (CD).

**Condensation protection.**

Superb design solution. Integrated ventilation directs air over the bath lid and minimizes condensation.

**Handle with ease.**

Makes day-to-day work easy. Comfortably move your JULABO Circulator around by using the ergonomic handles (front and rear).

**Internal. External.**

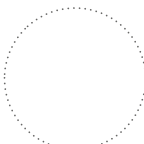
The pump is controlled via a lever located directly below the display. Easily change between internal and external circulation.

**Mobile.**

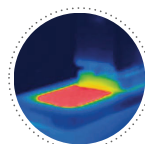
Extra easy handling. Integrated castors for easy repositioning of refrigerated circulators.

**More bath.**

Designed for more comfort. Thanks to the recessed cooling coil, the internal bath provides more space.

**Safety.**

CORIO CD and CP comply with Class III (FL) according to DIN 12876-1 and switches off automatically in case of high temperature or low liquid level alarm.

**Solid.**

Minimized energy loss through high-quality insulation.

**Space saving. Free up space.**

Place your JULABO Circulator right next to an application, another unit, or wall. That saves space. This is made possible by eliminating vents and connections on the sides.

**Stable.**

Rubber feet allow for a secured footing of your CORIO to prevent damage to your laboratory equipment.

**Tidy.**

The special drain tap for easy draining of bath fluids without tools.

**Touching permitted.**

Optimum safety. The ergonomic plastic handle protects your fingers from hot surfaces.

**100% Checked.**

100% testing. 100% quality. Each JULABO Circulator undergoes thorough quality testing before leaving the factory.

**Green technology.**

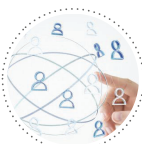
Development consistently applied environmentally friendly materials and technologies.

**JULABO. Quality.**

Highest standards of quality for a long product life.

**Quick start.**

Individual JULABO consultation and comprehensive manuals at your disposal.

**Satisfied customers.**

11 subsidiaries and more than 100 partners worldwide guarantee fast and qualified JULABO support.

**Timer. Integrated.**

CORIO circulators include an integrated timer function. When the set time has elapsed, a signal sounds and the device switches off. Setting range: 0 ... 999 minutes.

**Connection. Easy.**

Inclined pump connections (M16x1) facilitate the connection of applications. Each unit includes 2 barbed fittings of 8/12 mm diameter each.

**Brilliant.**

Very bright display makes it easy to read even from a distance.

**Everything at the front.**

All operating controls and safety functions are accessed easily and comfortably from the front.

**Exact.**

You can rely on it. PID1 control and 'Active Cooling Control' make the new CORIO precise and perfect.

**Locked in.**

The lockable power plug guarantees safe connection. More process safety.

**Switch on. And off you go.**

Intelligent operating concept. Ready for operation with just a few quick and easy steps.

**Powerful. Adjustable.**

Strong pressure pump, continuously adjustable.

**Early warning system for low liquid level.**

Maximum safety for your application. Optical and audible alarm allows user to refill bath fluid in time.

**Connectivity.**

Remote control made easy. CORIO CP circulators feature a USB connection and RS232 interface.