

APAQ C130^{TC}

Basic Programmable 2-wire Transmitter for Thermocouple



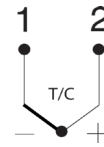
The APAQ C130^{TC} is a modern transmitter with high reliability and great performance. External influences such as ambient temperature, vibration, moisture and EMC interference have minimal influence on the measurement result, thanks to the robust design.

- Type: Digital
- Input: TC
- Output: 4-20 mA
- Isolation: Unisolated
- Measuring channels: 1 channel

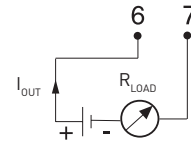
Specifications:

Input	
TC type B - Pt30Rh-Pt6Rh (IEC 60584)	0...+1820 °C / +32...+3308 °F
TC type E - NiCr-CuNi (IEC 60584)	-270...+1000 °C / -454...+1832 °F
TC type J - Fe-CuNi (IEC 60584)	-210...+1200 °C / -346...+2192 °F
TC type K - NiCr-NiAl (IEC 60584)	-270...+1300 °C / -454...+2372 °F
TC type N - NiCrSi-NiSi (IEC 60584)	-270...+1300 °C / -454...+2372 °F
TC type R - Pt13Rh-Pt (IEC 60584)	-50...+1750 °C / -58...+3182 °F
TC type S - Pt10Rh-Pt (IEC 60584)	-50...+1750 °C / -58...+3182 °F
TC type T - Cu-CuNi (IEC 60584)	-270...+400 °C / -454...+752 °F
Adjustments	
Minimum span	
TC type B	700 °C / 1260 °F
TC type R, S,	300 °C / 540 °F
TC type E, J, K, T	50 °C / 90 °F
TC type N	100 °C / 180 °F
Zero adjustments	Any value within range limits
Output	
	4-20 mA, temperature linear
Sensor failure indication	
	Upscale (≥ 21.0 mA) or downscale (≤ 3.6 mA)
NAMUR compliance	
	Current limitations and failure currents acc. to NAMUR NE 43
Response time	
	0.4 to 26 s, adjustable filtering level
Ambient temperature	
Storage and operation	-40 to +85 °C / -40 to +185 °F
Galvanic isolation	
	None
Power supply	
	6 to 32 VDC
Typical accuracy	
	Max. of [CJC not included]
TC type R, S, T	± 2.0 °C or ± 0.2 % of span / ± 3.6 °F or ± 0.2 % of span
TC type B (<100 °C / <212 °F)	not specified
TC type B (100 °C...400 °C / 212 °F...752 °F)	± 10 °C / ± 18 °F
TC type B (>400 °C / >752 °F)	± 2.0 °C or ± 0.2 % of span / ± 3.6 °F or ± 0.2 % of span
TC type E, J, K	± 1 °C or ± 0.2 % of span / ± 1.8 °F or ± 0.2 % of span
TC type N (-100...+1300 °C)	± 1 °C or ± 0.2 % of span / ± 1.8 °F or ± 0.2 % of span
TC type N (-270...-100 °C)	± 2.0 °C / ± 3.6 °F
Mounting	
	DIN B head or larger, DIN-rail (with adapter)
Vibration	
	Acc. to IEC 60068-2-6, test Fc, 10...2000 Hz, 10 g
EMC	
	EN 61326-1 and EN 61326-2-3
Configuration	
	App Inor Connect via NFC

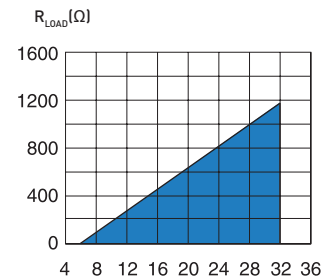
Input connections



Output connections



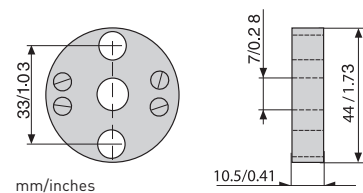
Output load diagram



Supply voltage U (V DC)

$$R_{LOAD} = (U - 6) / 0.022$$

Dimensions



Ordering information

APAQ C130 ^{TC}	70C1300211
Head mounting kit	70ADA00017
DIN-rail Adapter + Screw (10 pcs)	70ADA00027