



TONE & PROBES

701K-G PROFESSIONAL TONE TRACING KIT

TESTING | TROUBLESHOOTING | ACCURACY

Product Features:

Tempo's tone and probe tracing kit allows professional technicians to identify wires from a bundle, to monitor voltage passing through the circuit, to check breaks in the circuit and to trace wires through walls. The Tempo Tracing Kit includes the generator tone which injects a signal onto the cable to be traced and the tracing probe which is used to trace out the wire. Quick, Reliable, Connections.



TRACE FASTER.

Clear warble tone allows you to trace telephone, data, and security cables faster.



WORK EASIER.

Easier signal strength viewing and three listening modes: speaker, headset, or butt-in telephone.



STAY SAFE.

Enhanced voltage protection (up to 150 V DC).

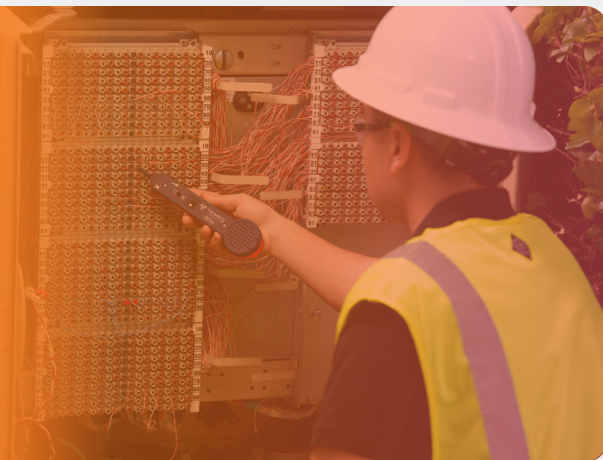
Features

- Industry standard tracing for voice, data, and video wiring
- Headset and Adjustable Gain Control (200EP-G)
- LED Worklight - view behind furniture, inside racks, and other dim lighting conditions
- LED Tone Proximity Indicator illuminates brighter the closer you get to the correct pair (closer to the tone)
- Detect Faults - one or two line telephone service, voltage/polarity and shorts/continuity (77HP-G)
- Distinct Tracing Signatures - two warble tones available for easier tracing
- Enhanced Voltage Protection - up to 150 V DC
- Metal or Plastic Tips - Use the best tip for the job
- Includes: 77HP-G Tone Generator, 200EP-G Tracing Probe, modular plug, alligator test leads, RJ11/45, and socket adaptor





TONE & PROBES



Specifications:

TONE SPECIFICATIONS (77HP-G/6A)

Talk Battery (into 600Ω):	4.6 VDC
Output Power (into 600Ω):	+10 dBm
Resistive Short Visual Indication:	<10 kΩ
Resistive Short Audio Indication:	<200Ω
Output Frequency (nominal)	Alternating-890/960 Hz
Warbling-Slow: 1.3 Hz/Fast: 6 Hz	
Voltage Protection (into 600Ω):	150 VDC
Battery:	9 VDC (NEDA 1604, JIS 006P, or IEC 6LF61)
Dimensions:	32 mm (1.25") x 64 mm (2.5") x 57 mm (2.25")
Weight (max):	128 g (4.5 oz.)
Operating Temperature:	0 °C to 50 °C (32 °F to 122 °F)
Storage Temperature:	-50 °C to 75 °C (-58 °F to 167 °F)

PROBE SPECIFICATIONS (200EP-G)

Gain (nominal):	30 dB
Input Impedance (nominal):	100 MΩ
Metal Tip Resistance:	0Ω
Plastic Tip Resistance:	300Ω
Headset:	3.5 mm stereo plug; 8 ohms minimum
Battery:	One 9 VDC (NEDA 1604, // JIS 006P, or IEC 6LR61)
Battery Life (nominal):	>50 hours
Dimensions:	231 mm (9.0") x 55 mm (2.2") x 28 mm (1.1")
Weight:	145 g (5.2 oz)
Operating/Storage Temperature:	0 °C to 50 °C (32 °F to 122 °F)

Order Information:

CAT. NO.	DESCRIPTION
701K-G	Professional Tone & Probe Tracing Kit
701K-G/6A	Professional Tone & Probe Tracing Kit w/ABN test clips
701K-G/6A-BOX	Professional Tone & Probe Tracing Kit w/ ABN test clips (plain box packaged)
200B-G	Basic Tone Probe
200EP-G	Professional Tone Probe
77M-G	Basic Tone Generator
77HP-G	Professional Tone Generator (Alligator clips)
77HP-G/6A	Professional Tone Generator (ABN clips)

CAT. NO.	DESCRIPTION
PRT-1	Plastic Tips for 200B, 200EP, 200FP, and 200XP
RPT-2	Plastic Tips for 200GX
RMT-1	Metal Tips for 200B and 200EP Probes
700C	Tone and Probe Carrying Case
711CS	Tone and Probe Carrying Case with belt hook
200C	Leather Belt Holster for 200 Series Tone Probe Amplifiers
77CS	Leather Belt Holster for Classic 77 Series Tone Generators

TC-701K-G 03/20



TEMPO
COMMUNICATIONS

Renewed Vision. Innovation Forward.

1.888.610.7664



www.calcert.com

sales@calcert.com