

Your solution source for predictive maintenance  
and monitoring instruments since 1977



- Tachometers
- Totalizers
- Timers
- Stroboscopes
- Vibration Meters
- Speed Sensors
- Fiberscopes
- Ultrasonic Leak Detectors
- Recording Tachometers



 **MONARCH INSTRUMENT**

1.888.610.7664

 [www.calcort.com](http://www.calcort.com)

[sales@calcort.com](mailto:sales@calcort.com)



**Example Applications:**

- Centrifuges
- Saw blades
- Grinders
- Elevators/escalators
- Engines
- Motors
- Conveyor belts
- Fans
- Propellers
- Vibration Studies

Pocket Laser Tach 200



**"Safety First"**

Safe and Accurate Non-Contact Measurements-View Target & Display Simultaneously, a Monarch Exclusive.

**Two Tachs in One ... the only portable laser tachometer available with both Remote Contact and Remote Sensors.**

Optional plug-in Remote Sensors with 8 foot cable. (25 foot cables available). See page 9 for details.



Remote Optical Sensor (ROS-P) Gap 36 inches



Remote Magnetic Sensor (MT-190-P) Gap 0.25 inches



Remote Infrared Sensor (IRS-P) Gap 0.50 inches

Remote Contact Assembly (RCA) with 6 foot (1.82m) cable, Contact Tips and 10 cm Linear Contact Wheel (Shows optional 12 inch circumference Linear Contact Wheel)



Optional RCA



TTL pulse Input/output cable with BNC connectors



Protective Carry Pouch with belt loop (optional)



PLT200 shown with optical sensor and TTL output cable



PLT200 and PT99 have a 1/4 20 threaded bushing for fixed mounting

The rugged and versatile Pocket Laser Tach is ideally suited for non-contact, contact and linear speed measurements. For indoor or outdoor applications.

**Pocket Laser Tach 200 (PLT200)** is a digital, battery-powered portable optical tachometer, which operates up to 25 feet (8 meters) from a reflective target using a class 2 laser light source. The ergonomic design allows safe, direct line-of-sight viewing of both the target and the display at the same time, while providing a non-slip rubber surface for single hand operation.

**Multi-Function For Pro-Active Maintenance**

PLT200 is a 32 function Tachometer/Ratemeter, Totalizer/Counter and Timer (stopwatch), which is programmable in both Imperial and Metric rates. Includes two phono plug connectors for our optional Remote Contact Assembly (RCA) or remote sensors. The PLT200 also has a TTL compatible pulse output to trigger devices like vibration data collectors or stroboscopes. The KIT is supplied complete with a Remote Contact Assembly including concave and convex tips and a 10 cm linear speed wheel all in a latching carrying case.

Pocket Laser Tach 200 Kit includes: Tachometer, RCA, Contact Tips, 10cm Linear Contact Wheel, 5 feet of Reflective Tape and a Latching Carrying Case.



PLT200 Kit

**Specifications PLT200**

- Display: 5 Digits, 5 Alphanumeric LCD
- Range(s): \*Optical: 5 to 200,000 RPM  
\*\*Contact: 0.5 to 20,000 RPM

Rates	10cm Contact Wheel	12 inch circumference Contact Wheel
Inch/min	1.969 to 78,740 IPM	6.000 to 144,000 IPM
Feet/min	0.164 to 6,561.7 FT/M	0.500 to 12,000 FT/M
Yard/min	0.055 to 2,187.2 YPM	0.167 to 4,000.0 YPM
Cm/min	5.000 to 200,000 cm/M	15.240 to 365,760 cm/M
M/min	0.050 to 2,000.0 M/M	0.153 to 3,657.6 M/M

- Totalizer: 1-999,990 (events or length)
- Timer: 99:59.9 Min, sec, tenths
- Accuracy: Optical: ±0.01% of reading  
Contact: ±0.05% of reading (rpm)
- Resolution: 0.001 to 10 RPM (range dependent)
- Operating Distance: 2" to 25' (5cm to 7.62m), ±70° from perpendicular
- Memory: Maximum, Minimum and Last
- Power: (2) "AA" 1.5 VDC batteries (30 hours)
- Environmental: 5° to 40°C (40° to 105°F)  
80% RH up to 31°C (88°F)
- Dimensions: 6.92 "H x 2.4"W x 1.6"D  
(17.58 x 6.10 x 4.06cm)
- Weight: 7 oz. (210 g)

\* performance subject to intensity of ambient light irradiation.  
\*\* also reads units per second and per hour.



**Ordering Information**

Pocket Laser Tach 200 Tachometer, N.I.S.T. traceable certificate of calibration, 12 inches of Reflective Tape.  
Pocket Laser Tach 200 Kit Tachometer with Latching Carrying Case, RCA, Tips and Linear Speed Wheel, Battery, 5 foot roll Reflective Tape, N.I.S.T. traceable certificate of calibration.

ROS-P Remote Optical Sensor with Mounting Bracket and 8 foot cable for Pocket Laser Tach 200 only.

ROS-P-25 Same as above with 25 foot cable.

T-5 Reflective Tape, 5 foot roll, 1/2" wide.

TTL pulse output cable

Latching Carrying Case

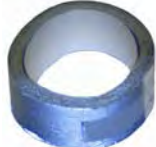
## Pocket-Tach PT99

RoHS

**Pocket Tach 99** (PT99) is a digital, battery-powered portable non-contact optical tachometer, which operates up to 36 inches from a reflective target using a bright red LED light source. The ergonomic design allows safe, direct line-of-sight viewing of both the rotating target and the display at the same time, while providing a non-slip rubber surface for single hand operation. Pocket Tach 99 is the value-leader of the world-class Pocket Tach Series from Monarch.



Protective Carry Pouch with belt loop (optional)



T-5 Reflective Tape 5' x 1/2" wide roll



PLT200 and PT99 have a 1/4 20 threaded bushing for tripod mounting



Pocket Tach 99

- Example Applications:**
- Grinders
  - Abrasives
  - Motors
  - Engines
  - Pumps

### Specifications PT99

• Display:	5 Digits, 5 Alphanumeric LCD
• Range:	5 to 99,999 RPM
• Accuracy:	±0.01% or ±1 Digit
• Resolution	0.001 to 1.0 RPM
• Autoranging:	1 Digit RPM
• Fixed:	1 Digit RPM
• Operating Range:	2 inches to 36 inches, ±45°
• Memory:	Maximum, Minimum and Last
• Power:	(2) "AA" 1.5 VDC batteries (60 hours)
• Environmental:	5° to 40°C (40° to 105°F) 80% RH up to 31°C (88°F)
• Dimensions:	6.92 "H x 2.4"W x 1.6"D (17.58 x 6.10 x .06cm)
• Weight:	7 oz. (210 g)

### Ordering Information

Pocket-Tach 99 Tachometer, Battery & 6 inches Reflective Tape.  
Carry Pouch  
T-5 Reflective Tape, 5 foot roll, 1/2" wide.

# PORTABLE TACHOMETERS (Non-Contact with Pistol Grip)

## Phasar-Laser Tach Series

NIST

**Phasar-Laser** combines the accuracy and safety of a non-contact optical tachometer with the convenience and ease of operation of a pistol grip instrument, housed in a rugged steel enclosure. The tachometer provides a convenient visible red laser for easy targeting along with a latching trigger for hand held operation and a mounting bushing for tripod mounted use.

**Phasar-Laser-R** provides for an optional remote sensor for difficult to reach locations in addition to the standard internal measurement optics.

### Features

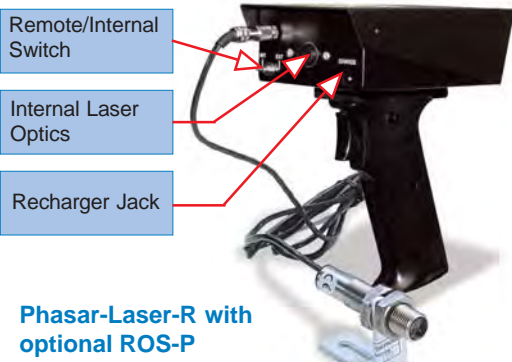
- Convenient pistol grip design
- Rugged steel enclosure
- Safe non-contact operation to 10 feet (3 m) and 45 degrees from reflective tape
- On-target and low battery indicators
- Last measurement memory



Phasar-Laser

### Example Applications:

- Engines
- Dynamometers
- Pumps
- Fan blades
- Centrifuges
- Motors



Phasar-Laser-R with optional ROS-P

Specifications	Phasar-Laser and Laser-R
Range	5-100,000 RPM
Accuracy	±1 RPM or 0.01% of reading
Resolution	1 RPM
Display	6 digit, 0.5" high Liquid Crystal Display
Power On	Pistol grip trigger with latching "on" Switch
Operating Range	10 feet (3m) and 45° from reflective tape
Power	(4) "AA" (LR6) Alkaline batteries or *optional NiCad batteries and AC recharger

### Ordering Information

Phasar-Laser Tachometer, 12" of Tape, and Alkaline Batteries  
Phasar-Laser Kit Tachometer, Recharger, 5 foot roll of Tape, NiCad Batteries in Latching Case  
Phasar-Laser-R Kit Tachometer, Recharger, Remote Optical Sensor, 5 foot roll of Tape, NiCad Batteries in Latching Carrying Case



Nova-Strobe dbx

## Common Applications:

- Non-contact RPM
- Diagnostic Inspection
- Bent blades/shafts
- Slipping/worn belts
- Printing Press
- Stop-action Inspection
- Textiles



Optional protective rubber cover

**Nova-Strobe x** - The standard for high intensity multi-function portable stroboscopes. Models are available with digital displays, battery or AC power, and a useful range of features which provide unmatched performance and value. Four models range from the Nova-Strobe **dbx** Deluxe, the most versatile battery powered digital stroboscope with internal phase shifting, down to the Nova-Strobe **bax** Basic, the most cost effective AC powered digital stroboscope.

Both the battery powered Nova-Strobe **dbx** and AC powered Nova-Strobe **dax** provide a range of 30 to 20,000 flashes per minute and an accuracy of  $\pm 0.002$  of setting. Flash rates are easily adjusted to fractional RPM by a coarse/fine control knob. Individual TTL compatible input and output jacks are provided for 'daisy chaining' of multiple strobes, triggering from an external source, or providing a trigger signal to external equipment.

Both dbx and dax provide internal phase shifting to keep the target precisely in view. Both provide x2 and  $\div 2$  capability for distinguishing actual RPM from harmonic frequencies. In addition, 9 user presettable memory flash rates for repetitive measurements and storage of the last flash rate measured are included.

**Features** All Nova-Strobes, Deluxe and Basic:

- Internal rechargeable batteries or AC powered models
- Weighs less than 2.0 Lbs. for easy handling
- More than 20% brighter Xenon light than competitors
- Electronic switching provides continuous cool operation
- Tripod mounting bushing in handle
- Low battery indicator (for battery powered models)

In addition, Nova-Strobe **dbx** and **dax** Plus models have:

- N.I.S.T. Traceable Certificate of Calibration included
- Internal phase shifting for easy reference target viewing
- Tachometer mode, speed measurement up to 250,000 RPM
- Power for optional sensors

Nova-Strobe dbx Deluxe



Select optional sensors for tachometer mode (see page 9)

TTL compatible input/output  
1/8" (3.5mm) phone plugs

Nova-Strobe bbx/bax Basic Digital LCD Display



Nova-Strobe dbx Kit



## Ordering Information

Nova-Strobe **bax** 115 Stroboscope, AC powered  
 Nova-Strobe **bax** 230 Stroboscope, AC powered  
 Nova-Strobe **dax** 115 Stroboscope, AC powered  
 Nova-Strobe **dax** 230 Stroboscope, AC powered  
 Nova-Strobe **bbx** 115/230 Stroboscope, battery Powered, universal PSC-2U (115/230 VAC) recharger (USA, UK, AUS, EURO plug)  
 Nova-Strobe **dbx** 115/230 Stroboscope, battery powered, universal PSC-2U (115/230 VAC) recharger (USA, UK, AUS, EURO plugs)  
 Also available in Kit form including: Stroboscope Recharger, spare lamp and carrying case.

Specifications	Nova-Strobe dbx, Deluxe Battery Powered	Nova-Strobe dax, Deluxe AC Powered	Nova-Strobe bbx, Basic Battery Powered	Nova-Strobe bax, Basic AC Powered
Range Flashes/Minute	30-20,000 FPM (Flashes Per Minute)		30-10,000 FPM (Flashes Per Minute)	
Display	6 Digit Numeric and 5 digit Alphanumeric LCD			
Accuracy/Resolution	0.002% of setting or +/- 1 lsd /0.01 FPM			
Flash Energy/Duration	230 mJoule up to 3450 FPM / 8-20 $\mu$ sec			
Average Power-Watts	>13W above 3450 FPM			
Flash Tube & Life	High Power Xenon - 100 million flashes typical			
External Triggers - in/out 1/8" (3.5mm) Phone Jacks	TTL (24Vdc Max) Input. Provides 3.3 Vdc TTL output			N/A
Tachometer Mode	5-250,000 RPM - Use with Optional Remote Sensor			N/A
Programmable Memory	Yes	Yes	N/A	
Internal Phase Shift	Yes	Yes	N/A	
Operating Time	2 hours typical @ 1800 FPM	Continuous	2 hours typical @ 1800 FPM	Continuous
Power Supply	Internal NiMH rechargeable batteries	115 Vac, 50-400 Hz or 230 Vac, 50-400 Hz	Internal NiMH rechargeable batteries	115 Vac, 50-400 Hz or 230 Vac, 50-400 Hz
Weight	1.9 Lbs. (.86 kg)	1.5 Lbs. (0.68 kg)	1.9 Lbs. (.86 kg)	1.5 Lbs. (0.68 kg)
Size (L x W x H)	Body: 9" x 3.66" x 3.56" (229 x 93 x 90 mm); Reflector Housing: 4.8" (122 mm) diameter; Handle: 4.25" (108 mm) long			

## Phaser-Strobe pbx

RoHS NIST CE

The **Phaser-Strobe pbx** incorporates the unique design features of the Nova-Strobe dbx with an increased operating range of 30 to 50,000 flashes per minute, as well as external phase shifting. The unique digital adjustment knob can select the decade for adjustments, so coarse and fine adjustments of flash rates are made quickly and with significantly better resolution than competitive units. The memory feature of the **Phaser-Strobe pbx** allows nine flash rates to be stored - displayed in flashes per minute or flashes per second. **Phaser-Strobe pbx** operates with internal rechargeable batteries or continuously from AC line power with the power supply/recharger.

**Features:**

- N.I.S.T. Traceable Certificate of Calibration included
- Phase Shift adjustable as phase angle or time with resolution to 0.01° and 0.01 msec
- Virtual RPM mode provides slow motion viewing for high speed events
- Backlit alphanumeric LCD shows flash rate, degrees, time
- Store and recall nine memory settings
- TTL compatible input/output jacks, power for optional sensors
- Tachometer mode from Remote Sensors (see page 9)

Specifications	Phaser-Strobe pbx
<b>Flash Range</b>	30-50,000 FPM (Flashes/Minute) 0.5-830 FPS (Flashes/Sec) (Hz)
<b>Accuracy</b>	±0.002% of Setting +/- least significant digit
<b>Digital Adjustment Knob</b>	36 detents per revolution and blinking decade selection
<b>Flash Rate Resolution (Internal Triggering)</b>	0.01 to 1.0 FPM (Menu Selectable)
<b>Operating Time</b>	2 hours typical @ 1800 FPM or continuous AC power
<b>Phase Delay - Degrees</b>	0.1 to 359.9 degrees
<b>Time Delay - Seconds</b>	0.01 to 1000 msec.
<b>Virtual RPM (Slow Motion)</b>	0-200 VRPM
<b>Flash Energy (Typical)</b>	230mJoule up to 3450 FPM
<b>Flash Duration (Typical)</b>	8-20 usec
<b>Average Power - Watts</b>	11W @ 3000 FPM; >13W @ 3450 FPM
<b>Tachometer Mode</b>	5-250,000 RPM from external trigger
<b>External Input</b>	Input Pulse - 0.5 usec min, TTL to 24V max (1/8" phone plug)
<b>Trigger Output/Remote Sync</b>	3.3V TTL Compatible 40 usec pulse-Positive/Negative
<b>Power</b>	Internal rechargeable batteries with AC power supply/recharger
<b>Weight</b>	1.9 Lbs. (0.85 kg) including batteries



Phaser-Strobe pbx



- Common Applications:**
- Calibration of Tachometers
  - Diagnostic Inspection
  - Engine R&D
  - Textiles
  - Centrifuges
  - Shaker Tables



Compatible with Remote Sensors (see page 9).

**Ordering Information**  
 Phaser-Strobe pbx 115/230 - Stroboscope with PSC-pbxU (115/230 Vac) Power Supply/Recharger  
 Phaser-Strobe pbx Kit 115/230 - Same as above with Spare Lamp and Latching Carrying Case

# PORTABLE STROBOSCOPES (for use with Vibration Data Collectors)

## Vibration-Strobe vbx

RoHS NIST CE

The **vbx vibration strobe** is uniquely designed to provide precise, instantaneous synchronization to a number of data collectors and FFT Analyzers triggered by an accelerometer. Built for portable applications, the **vbx** is the perfect lightweight phase analysis tool. **vbx** allows for the measurement of phase without stopping the machinery to install reflective tape. Phase analysis is quick and accurate using the Filter Bandwidth Selector and the Relative Phase Adjustment. Unique "Tracking Filter" maintains phase lock to input pulse. **vbx** can power and be triggered by accelerometers with or without data collectors.

**Kit includes:** Strobe, accelerometer interface cable, universal p.s./recharger, spare lamp in carry case.

Specifications	Vibration-Strobe vbx
<b>Flash Range</b>	30-50,000 FPM (Flashes/Minute) 0.5-830 FPS (Flashes/Sec) (Hz)
<b>Accuracy</b>	±0.002% of Setting +/- least significant digit
<b>Digital Adjustment Knob</b>	36 detents per revolution and blinking decade selection
<b>Flash Rate Resolution (Internal Triggering)</b>	0.01 to 1.0 FPM (Menu Selectable)
<b>Indicators</b>	Battery Level, On Target, Time, Auto, Alt, Tach, Lock, and EXT icons
<b>Operating Time</b>	2 hours typical @ 1800 FPM or continuous AC power
<b>Phase Delay - Degrees</b>	0.1 to 359.9 degrees
<b>Tracking Filter</b>	Selectable Wide and Narrow Bandwidths. Filter may not lock below 100 fpm
<b>Time Delay - Seconds</b>	0.01 to 1000 msec.
<b>Virtual RPM (Slow Motion)</b>	0-200 VRPM
<b>Flash Energy (Typical)</b>	230mJoule up to 3450 FPM
<b>Flash Duration (Typical)</b>	8-20 usec
<b>Average Power - Watts</b>	11W @ 3000 FPM; >13W @ 3450 FPM
<b>Tachometer Mode</b>	5-250,000 RPM from external trigger
<b>External Input</b>	Input Pulse - 0.5 usec min, TTL to 24V max (1/8" phone plug)
<b>Trigger Output/Remote Sync</b>	3.3V TTL Compatible 40 usec pulse-Positive/Negative
<b>Power</b>	Internal rechargeable batteries with AC power supply/recharger



Vibration Strobe vbx



**Ordering Information**  
 Contact Factory for available Models.



Palm Strobe x

**Common Applications:**

- Data Collectors
- Fans
- Printing Presses
- R&D
- Utilities
- Felt Belts/Conveyor
- Vibration Studies
- Textiles

**Ordering Information**

Palm Strobe x 115/230 - Stroboscope with PSC-2U (115/230Vac) recharger \*

Palm Strobe x Pak 115/230 - Same as above with spare battery and holster

Palm Strobe x Kit 115/230 - Stroboscope with PSC-2U (115/230 Vac) recharger \*, Spare Lamps and Latching Carrying Case

Palm Strobe x Deluxe Kit - Stroboscope and Battery with PSC-2U (115/230 Vac) recharger \*, Spare Lamps & Battery, Holster and Latching Carrying Case

\* Includes USA, Australian, UK and Euro plug adapters.

**PALM STROBE x** Offers excellent brightness, exceptional features, rugged construction and extra long battery life. Unique one-touch joystick-type button allows single hand operation for fast fractional RPM tuning. Select mode of operation for internal tuning, external TTL pulse input, tachometer display and x2 ÷2 functions. Eight memory positions provide rapid recall of user defined frequencies.

**Features:**

- Patented Plug-in Battery Pack
- Easy One Hand Operation
- Light weight, Pocket Size
- Flash Rates to 12,500 FPM
- Tachometer Mode from Self Powered Sensors
- TTL Compatible Input/Output (3.5mm phono plug)

**Unlimited Power:**

World's First Stroboscope with removable, rechargeable battery pack (patented).

Palm Strobe x shown with optional protective rubber cover

Specifications	Palm Strobe x Series
<b>Internal Mode Range</b>	100 - 12,500 FPM (Flashes per Minute)
<b>Light Power</b>	7.9 watts @ 6000 FPM, 150 mJoules up to 3100 FPM
<b>Flash Lamp Life</b>	100 million flashes typical
<b>Flash Duration</b>	10 - 30 microseconds typical
<b>Display</b>	6-digit alphanumeric backlit LCD display
<b>Flash Rate Resolution</b>	0.1 FPM
<b>Flash Rate Accuracy</b>	Greater of ±0.01% of reading or ±0.5 FPM
<b>Tachometer Mode</b>	5 to 250,000 RPM
<b>External Input</b>	0 to 5 Vdc (12 Vdc max.) TTL compatible, positive edge triggered
<b>Output Pulse</b>	0 to 5 Vdc typical- 350 µsec positive pulse (3.5mm 1/8" phono plug)
<b>Run Time</b>	2 Hours typical @ 1800 FPM >1 Hour typical @ 6000 FPM
<b>Memory</b>	8 programmable flash rates and last flash rate at power down
<b>Adjustment</b>	Four quadrant tuner button with blinking decade select for flash rate up and down, multiply by 2 and divide by 2
<b>Modes</b>	Internal, External, Tachometer, Preset, x or ÷2, Locked On
<b>Battery Power</b>	Removable 6Vdc rechargeable battery pack
<b>Recharger(s)</b>	100-240Vac, 50/60Hz, includes 4 interchangeable adapters
<b>Weight</b>	1.2 lbs. (0.55 kg) including battery
<b>Strobe Dimensions</b>	3.04 x 9.34" (77 x 237 mm)

## PERMANENT MOUNT STROBOSCOPES

## MVS Machine Vision Strobe

RoHS 

MVS Machine Vision Strobe

The **MVS Machine vision stroboscope** is designed for fixed installation in any application requiring continuous stroboscopic visual inspection. The MVS has an extremely bright xenon light output with adjustable pulse width and focal distance for optimized target illumination. Connect your existing trigger signal or the optional Frequency Controller with LCD. Connect multiple units together in parallel for applications with wide illumination area requirements. Use the optional Audio Interface Box and microphone to create stunning audio driven visual effects.

**Features:**

- Continuous (24/7) cool operation
- Maximum flash rate of 9000 FPM
- Rugged fan cooled aluminum housing
- Tripod mounting bushing
- Dependable and versatile
- 115 or 230Vac input power

**Inspection Applications:**

- Labels
- Textiles
- Paper
- Packaging
- Bottling
- Fluid Droplets

**Optional Audio Interface Box and Microphone****Optional Frequency Controller with LCD****Ordering Information**

MVS 115 115Vac powered Machine Vision Strobe with TTL input cable

MVS 230 230Vac Machine Vision Strobe with TTL input cable

MVS Frequency Controller with LCD with power supply and input/output cable

MVS Audio Interface Box with power supply and interface cables

MVS Audio Microphone with mounting hardware

Specifications	MVS Machine Vision Strobe
<b>Range</b>	1 to 9000 Flashes/Minute (150Hz)
<b>LCD Display (optional)</b>	6 Digit Numeric and 5 Digit Alphanumeric LCD
<b>Flash Energy/Duration</b>	450 mJoule up to 4000 FPM / 10 to 100 microseconds
<b>Light Output Power</b>	20 watts average
<b>Trigger to flash delay</b>	5 microseconds
<b>Operating temp</b>	32 to 104 deg. F (0 to 40 deg. C) max 80% Humidity
<b>Size/Weight</b>	5.75"L x 4.36"W x 5.0"H / 1.5 lbs.
<b>External Trigger in/out</b>	TTL (3.3 to 24Vdc max)
<b>Input Power</b>	Available with 115Vac 50/60Hz or 230Vac 50/60Hz



The **Examiner 1000** overall vibration meter and electronic stethoscope is the ideal tool for cost-effective predictive maintenance. This meter is simple to operate with only one button and volume adjustment. Troubleshoot bearings and lubrication with the digital LCD and stethoscope features to enhance machinery reliability. Compare your vibration results by using the ISO 10816 Severity Chart right on the meter. **N.I.S.T. traceable calibration is available.**

**Features:**

- Electronic Stethoscope-troubleshoot while listening to the bearing
- Measure vibration in:
  - Acceleration-** perfect for high-speed applications
  - Velocity-** in English or Metric per ISO 10816
  - Acceleration Envelope-**high-pass filter method



- Example Applications:**
- Bearings
  - Gearboxes
  - Lubrication
  - Pumps
  - Motors
  - Fans

Examiner 1000

SPECIFICATIONS		EXAMINER 1000
<b>Amplitude Ranges</b>	Acceleration:	0.01 to 19.99g (RMS)
	Velocity:	0.01 to 19.99 in/sec (RMS) 0.1 to 199.9 mm/sec (RMS)
	Envelope:	0.01 to 19.99 ge (PEAK)
<b>Frequency Ranges</b>		Overall: 10 Hz to 10 kHz Envelope: 0.5 kHz to 10 kHz
<b>Display Indications</b>		LCD 3.5 digit with Measurement, Hold and Low Battery
<b>Vibration Sensor</b>		Piezoelectric Accelerometer 100 mV/g
<b>Output</b>		Audio: (3.5 mm) mini plug Sensor Power: 12 Vdc @ 2 mA
<b>Power</b>		(2) "AA" cell batteries
<b>Operating Time</b>		20 hours continuous without phones
<b>Environmental</b>		-14 to 122 °F (-10 to 50 °C)
<b>Dimensions</b>		6.3 x 3.3 x 1.25" (152 x 83 x 32 mm)
<b>Weight</b>		2.85 lbs (1.30 kg)

VIBRATION SEVERITY PER ISO 10816-1						
	Machine		Class I small machines	Class II medium machines	Class III large rigid foundation	Class IV large soft foundation
	in/s	mm/s				
Vibration Velocity Vrms	0.01	0.28				
	0.02	0.45				
	0.03	0.71			good	
	0.04	1.12				
	0.07	1.80				
	0.11	2.80			satisfactory	
	0.18	4.50				
	0.28	7.10			unsatisfactory	
	0.44	11.2				
	0.71	18.0				
1.10	28.0			unacceptable		
1.77	45.9					



Examiner 1000 Kit with OnTime Trending Software

Overall Vibration Severity Chart, located on the front panel of the Examiner 1000, provides instant status of measured machinery.

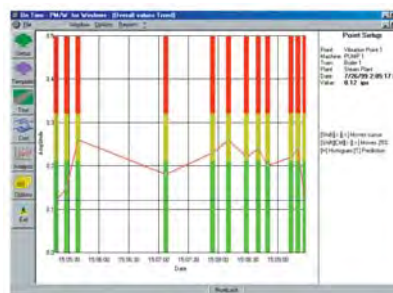
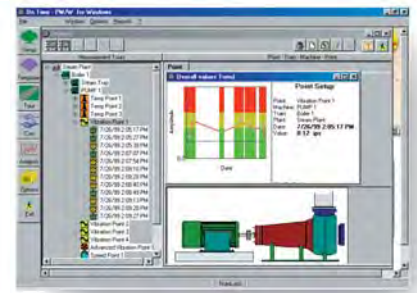
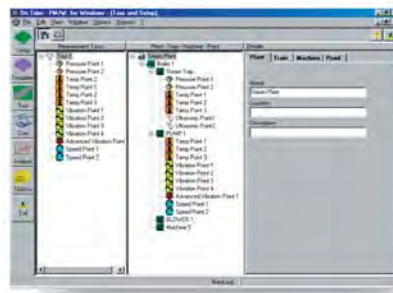
**OnTime Trending Software** is a simple-to-use, graphical program designed for condition-based maintenance through the routine trending of vibration and process information. Trending is the best method to judge the dynamic operating conditions of your machinery. **OnTime** helps you to manage all key machinery operating conditions.

**Trend:**

- overall vibration readings
- temperature
- speed
- process measurements of any type

**OnTime** is easy to set-up. Building the user-defined database of collection points is simple and intuitive. Construct entire Plants with complex machines and data collection points in minutes. Cut, paste, copy and edit-all the familiar windows features are here.

**OnTime** graphically displays automatically built trends of the data entered. User defined alarms are set and if violated, an immediate visual alarm is displayed in the software. This allows for instant identification of machines which require corrective action. Compare any type of data.



**Ordering Information**  
 Examiner 1000 System Vibration Meter, Sensor Pak, Headphones, Carrying Case, OnTime GP Software  
 Examiner 1000 Kit Vibration Meter, Sensor Pak, Headphones, Carrying Case and OnTime GPLite Software  
 Examiner 1000 Vibration Meter with Sensor Pak, Headphones, Carrying Case, No OnTime Software included  
 OnTime GP Software for Windows 95/98, XP and NT 4.0



ACT-3X Panel Tachometer/Ratemeter/Totalizer

The ACT Series consists of two models - one tachometer and one tachometer/ratemeter/totalizer. Both feature universal inputs for two and three wire sensors providing signals of 0-5V TTL or 0-1.1Vac to 0-50 Vac. Both models operate from all Monarch sensors (see Page 9) and display in fixed or floating decimal point format. The ACT-3X dual channel input provides the best feature set of any panel or bench top instrument available today.

**Features:**

**ACT-1B (5-99,999 RPM)**

- Economically priced
- Output options: 4-20 mA, 0-5 Vdc or TTL pulse

**ACT-3X (5-999,990 RPM)**

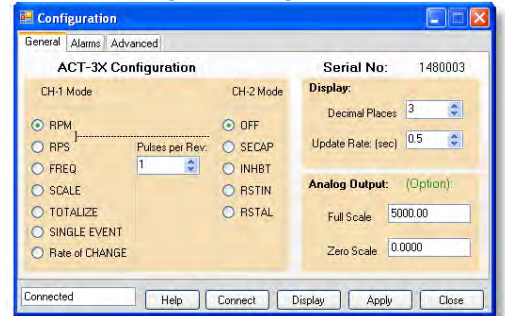
- N.I.S.T. Traceable Certificate of Calibration included
- Standard TTL pulse repeater output
- Optional 4-20mA, 0-5Vdc, and 2 alarm outputs
- Optional Serial, USB or Ethernet communications
- Single event speed capture from start and stop pulses, in units such as mph, cm/sec, etc. Using two sensors - for linear rate of travel on second input channel.



**PM Remote Software**

Both the ACT-1B and the ACT-3X can be used with the Windows based PM Remote Software to further enhance their capabilities. Use your PC to customize the configuration of the ACT-1B and ACT-3X or view real-time data over the communications interface. Live data can also be streamed directly into Microsoft Excel™. PM Remote Software is included with the optional USB Programming Cable for the ACT-1B and the ACT-3X (with standard serial option) and is included with the ACT-3X when ordered with RS232C serial, USB or Ethernet communication options.

**PC Configurable using PM Remote Software**



**Ordering Information**

PM Remote Software and USB Programming Cable: for use with ACT-1B and ACT-3X (with standard 3.5mm phono connector).

Specifications	ACT-1B	ACT-3X
<b>Speed Range</b>	5-99,999 RPM	5-999,990 RPM (Speeds below 5 RPM possible with multiple pulses/revolution)
<b>Accuracy</b>	±1 RPM or 0.005% of reading	±0.001% of reading or ±1 of displayed value (standard gate) ±0.006% of reading or ±1 of displayed value (fast gate).
<b>Resolution</b>	1 RPM	Up to 0.001RPM, 10 RPM (100,000 to 999,990 RPM).
<b>Totalizer/Counter</b>	N/A	Display Range: 0.001 to 99,999
<b>Input Configuration</b>	Universal inputs for all Monarch Sensors or TTL input or 1.5 to 50Vac input.	
<b>Alarm Output</b>	N/A	2 Form C relay contacts rated 1A at 230 Vac, can be set as failsafe.
<b>Alarm Capability</b>	N/A	Two alarm setpoints: set as High or Low, latching or non-latching Hysteresis and low limit lockout are programmable.
<b>Analog Output</b>	Voltage (AO): 0 to 5Vdc, 5mA max load or Current (IO): 4-20mA (500 ohms max). 1-5Vdc with 250 ohm resistor.	
<b>Pulse Repeater</b>	0-5V TTL compatible. One pulse out for each pulse in.	
<b>Communications</b>	Optional (3.5mm phono plug)	Standard (3.5mm phono plug), Optional RS232C, USB type B, or Ethernet
<b>Scale Factor</b>	N/A	0.0001-9999.9
<b>Totalize/Count</b>	N/A	1-99,999
<b>Display</b>	5 digits, 0.56" (14 mm) high red LED	
<b>Display Update</b>	2x per second above 120 RPM	
<b>Dimensions</b>	1/8 DIN by 4.5" (114 mm) deep	
<b>Input Power</b>	<b>Standard:</b> 100-240Vac, 50/60Hz <b>Optional:</b> 12 or 24 Vdc ±20%, Isolated 5 Watts.	
<b>Sensor Power</b>	5Vdc or 12Vdc or optional 24Vdc to sensor	

**Ordering Information**

**ACT-1B -**

**ACT-3X -**

- Input Power**
- 1 100-240Vac 50/60Hz
  - 2 Isolated 12Vdc ±20%
  - 3 Isolated 24Vdc ±20%

- Pulse Output**
- 0 No
  - 1 Yes

- Sensor Power**
- 1 12Vdc
  - 2 5Vdc
  - 3 24Vdc

- Analog Output**
- 0xxxxx None
  - 1xxxxx 0-5Vdc Non-iso.
  - 2xxxxx 4-20mA Non-iso.
  - 3xxxxx 0-5Vdc isolated
  - 4xxxxx 4-20mA isolated
- xxxxxx = must specify full scale RPM

- Input Pulses Per Rev.**
- xxx = Specify (001 to 999)

- Input Power**
- 1 100-240Vac 50/60Hz
  - 2 Isolated 12Vdc ±20%
  - 3 Isolated 24Vdc ±20%

- Sensor Power**
- 1 12Vdc
  - 2 5Vdc
  - 3 24Vdc

- Analog Output**
- 0 None
  - 1 0-5Vdc Non-iso.
  - 2 4-20mA Non-iso.
  - 3 0-5Vdc isolated
  - 4 4-20mA isolated

- Communications**
- 0 Standard Serial (phono plug)
  - 1 RS232C (9 pin D shell)
  - 2 USB (USB type B)
  - 3 Ethernet (RJ45)

- Alarm Outputs**
- 0 None
  - 1 2 Form C relays rated 1 amp @ 230Vac

- BN Modification**
- 0 None
  - 1 Mod. for use w/ Bentley Nevada or Eddy probes



## for Tachometers & Stroboscopes or stand alone use

**ROS (Remote Optical Sensor):** Threaded stainless steel remote optical sensors have a visible red LED light source and green LED 'On Target' indicator. Performs over a wide speed range and operating envelope.

**Common usage:** Wide range of general purpose applications in relatively clean environments.



Operating Distance	3 feet (1 m) and 45° from reflective tape
Speed Range	1-250,000 RPM
Operating Temperature	-14° to 158°F (-10° to 70°C)
Power Required	3.3 to 15 Vdc @ 45 mA
Output Signal	TTL Same as Source
Standard Cable	8 Feet (2.4 m)
Dimensions	2.9" (L) x 0.625" diameter (73 x 16mm)

**ROS-HT (Remote Optical Laser Sensor High Temp):** Threaded stainless steel optical sensor with visible white light source. Ideal for automotive and truck cooling system testing up to 257°F (125°C)

**Common usage:** Automotive and heavy truck cooling fan speeds.



Operating Distance	2 feet (61 cm) and 45° offset from target
Speed Range	1-50,000 RPM
Operating Temperature	-13° to 257° F -25° to 125° C
Power Required	6-24 Vdc @ 40mA
Output Signal	TTL Same as Source
Standard Cable	25 Feet (7.6 m)
Dimensions	2.9" (L) x 0.625" diameter (73 x 16mm)

**ROLS (Remote Optical Laser Sensor):** Threaded stainless steel remote optical laser sensors have a visible red laser light source and green LED 'On Target' indicator. Performs over a wide speed range and operating envelope.

**Common usage:** Wide range of applications where distance to target is large



Operating Distance	Up to 25 feet (7.62 m) and 60° offset from target
Speed Range	1-250,000 RPM
Operating Temperature	-40° to 180° F -40° to 80° C
Power Required	3.3-15 Vdc @ 35mA
Output Signal	TTL Same as Source
Standard Cable	8 Feet (2.4 m)
Dimensions	3.12" (L) x 0.71" (M16 x 18 x 79.4mm)

**IRS-W or IRS-P:** Ideal sensor for working up to 0.5" (12 mm) from high speed equipment or other applications providing only contrasting light and dark surfaces or beam interruption by solid objects as small as 0.30" (1mm).

**Common usage:** Dentist and other high speed drills, slots or gear teeth. Does not require reflective tape. Use black/white CAD drawing.



Operating Distance	0.5" (12 mm)
Speed Range	1-999,990 RPM
Operating Temperature	-10° to 212°F (-23° to 100°C)
Power Required	3.3 to 15 Vdc
Output Signal	TTL Same as Source
Standard Cable	8 Feet (2.4 m)
Dimensions	2.9" (L) x 0.625" diameter (73 x 16mm)

**M-190W or M-190P (Magnetic Sensor):** Most popular sensor for use with 60 tooth 20 pitch gears. Sensor mounts within 0.005 inches (0.127 mm) of a minimum 0.1 inch (2.5 mm) target.

**Common usage:** Ferrous metals, primarily gear teeth.



Operating Distance	0.005" (0.127 mm) gap with 0.1" target (2.5mm) min.
Speed Range	1-99,999 RPM
Operating Temperature	-100° to 225°F (-73° to 107°C)
Power Required	None (Self Generating)
Output Signal	190V P-P
Standard Cable	8 Feet (2.4 m)
Dimensions	2.0" (L) x 0.625" (50 x 16mm)

**MT-190W or MT-190P (Magnetic Sensor):** Amplifier extends operating gap to 0.25 inches (6.35 mm) from the target. Frequently used on gears as the M-190, but can also sense bolt heads or shaft keys and provides a TTL output signal that is equal to the source voltage.

**Common usage:** Ferrous metals including bolt heads or shaft keys for on-line systems.



Operating Distance	0.25" (6.35mm) gap with 0.1" target (2.5mm) min.
Speed Range	1-99,999 RPM
Operating Temperature	-100° to 225°F (-73° to 107°C)
Power Required	3.3 to 24 Vdc, 4mA
Output Signal	TTL Same as Source
Standard Cable	8 Feet (2.4m)
Dimensions	2.0" (L) x 0.625" (50 x 16mm)

**GE-200HP:** Ideal sensor for detecting gasoline engine RPM. Up to 12 inch (304 mm) working distance from ignition coil or magneto.

**Common usage:** 2-cycle and 4-cycle gasoline/petrol engines.



Operating Distance	Up to 12 inches (304mm)
Speed Range	200-30,000 RPM
Operating Temperature	0° to 175°F (-18° to 80°C)
Power Required	3.3 to 24 Vdc, 4mA
Output Signal	TTL Same as Source
Standard Cable	15 Feet (4.5 m)
Dimensions	2.16" (L) x 0.82" (55 x 21 mm)

**P5-11:** A two wire probe style inductive sensor for use up to 0.2 inches (5 mm) from 0.5 inch (12 mm) metallic target such as bolt head or shaft locking key.

**Common usage:** Permanent installation in harsh industrial environments.



Operating Distance	0.2" (5mm) from 0.5" (12mm) metallic target
Speed Range	1-60,000 RPM
Operating Temperature	-4° to 140° F (-20° to 60° C)
Power Required	7.7 to 9 Vdc, 3mA
Output Signal	Namur (DIN 19 234)
Standard Cable	6 Feet (1.8 m)
Dimensions	1.3" (L) x 0.43" (32 x 11 mm)

**PS-12:** A three wire threaded IP67 metal sensor outputs an open collector PNP pulse. Operates at a 0.15 inch (4mm) gap with a .45 inch (12mm) target. Includes red LED on target indicator.

**Common usage:** Permanent installation in harsh industrial environment. Online vibration data collectors



Operating Distance	0.15" (4mm) from 0.5" (12mm) metallic target
Speed Range	1-60,000 RPM
Operating Temperature	-10° to 160° F (-25° to 75° C)
Power Required	6 to 36 Vdc, 15mA
Output Signal	PNP open collector
Standard Cable	6 Feet (1.8 m)
Dimensions	2.0" (L) x 0.48" (diameter) (50 x 12 mm)

**NOTES:** W = tinned wire leads, P = 1/8" (3.5mm) phono plug connector. ROS is available with 8 or 25 foot cable. Additional cable length for all sensors (up to 500 feet)



SPSR-115/230

Common Applications:

- Vibration Studies
- Fans/Blades
- Engines/Motors
- Balancers
- Tach Input
- Data Acquisition

The unique SPSR Series of Self-Powered Sensors provide a TTL compatible pulse output from any of four input sensors (see page 9 for details):

- A laser light source (ROLS-P)
- A visible optical red LED light source (ROS-P)
- An infrared light source (IRS-P)
- An amplified magnetic sensor (MT-190P)

See Page 9 for detailed sensor specifications

The TTL compatible pulse output is switch selectable as either positive going 0-5V pulses or negative going 5-0V pulses provided on a BNC connector. Internal rechargeable batteries provide 40 hours of operation between charges. For continuous operation, all SPSR configurations can be powered by 115Vac, 230Vac or 9-15Vdc.

Self-powered sensors are a critical element for providing one TTL pulse per revolution for vibration analyzers, spectrum analyzers, stroboscopes, data acquisition equipment, tachometers, balancers, waveform analyzers and magnetic tape recorders.

Remote Optical Laser Sensor (ROLS-P)

Remote Optical Sensor (ROS-P)



Magnetic Trigger Sensor (MT-190P)



Infrared Sensor (IRS-P)



1 SPSR-IM with PSC-2U



How to Select your custom SPSR and sensor

- 1 Begin with the SPSR-IM Interface Module and PSC-2U
- 2 Select the sensor(s) best suited for your application

Ordering Information

SPSR-115/230 includes: SPSR-IM, PSC-2U, ROS-P and 12 inches of reflective tape  
 SPSR-IM includes: PSC-2U, 115/230 Vac power supply/re-charger (USA, AUS, UK and EURO plugs).  
 CA-DCSPSR: Cigarette Lighter DC Power adapter with 6 foot cable



Cigarette Lighter DC Power adapter with 6 foot cable (optional)

Specifications	SPSR Series
Range (RPM)	Same as sensor
Output Signal	TTL compatible pulse, 0-5V or 5-0V
Pulse Width	Determined by size of target and rotational speed
Output Connector	BNC
Power	Built in rechargeable battery pack (NIMH), 4.8Vdc



Smart Laser Sensor is an internal battery-powered optical speed sensor utilizing a visible Class 3R Laser for a TTL pulse output. Operating range up to 65 feet (19.8 m) with reflective tape and up to 3 feet\* (1 m) from contrasting color targets, keyways, bolt heads or blades.

- "Smart" auto gain provides best performance in picking up target reflections.
- "On Target" indicator
- TTL pulse output signal inverter switch
- Manual sensitivity knob provides dynamic fine tuning of sensor response
- Signal/Pulse/RS232 Output DIN connector port
- External DC power/recharger port for continuous operation (24/7)
- Tripod mounting bushing (1/4 - 20 UNC)
- Optional RS232, DB9 Pin connector with tinned wire leads



\* performance subject to intensity of ambient light irradiation.

Specifications	Smart Laser Sensor
Optical:	Class 3R (per IEC 60825-1) visible laser 650nm @ 3 mW peak power
Operating Range:	up to 65 feet (19.8 m) from T-5 reflective tape
Speed Range:	1-500,000 RPM
Output Signal:	TTL 5-0 VDC (user selectable polarity), RS232
Operating Temp:	32° to 104°F (0° to 40°C)
Dimensions:	5.41(L) x 2.35(W) x 2.14" (H) (13.74 x 6.43 x 5.43cm)
Mounting:	1/4 - 20 UNC bushing for tripod



Ordering Information  
 SLS-115/230  
 Smart Laser Sensor with 115/230 VAC PR Universal recharger, SLS-CA-BNC cable and 12 inches of Reflective Tape

The DC1250 is a feature rich data acquisition system offering 2 universally configurable isolated inputs for measuring DC voltage, DC current, thermocouples and RTD's as well as frequency and pulse inputs. 4 internal alarm setpoints, 2 alarm relay outputs and 1 digital control input are all standard. A maximum sample storage rate of 100 samples per second can be set for both channels allowing for capture of short duration process signal anomalies. CompactFlash™ cards up to 2 Gigabyte size can be used allowing many data points to be stored over long periods of time.

The DC1250 can be used in conjunction with many of Monarch's speed measurement sensors. Power for sensors is provided from the DC1250 rear terminals. Measure, display and record RPM ranges from 5 - 600,000. Choose the sensor best suited for your application or take your existing signal directly into the DC1250.



Data Chart 1250

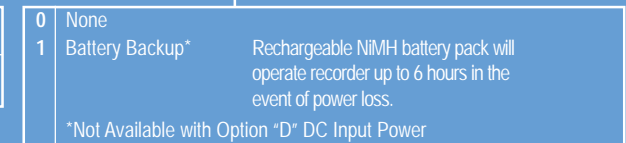
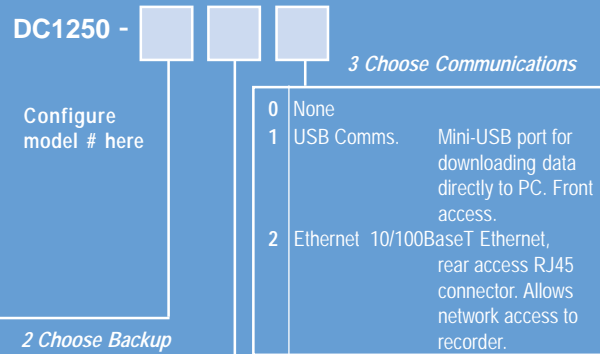


### Temperature Inputs

<b>Thermocouple:</b>	<b>Accuracy:</b> 0.3% of full scale (typical). Ambient Temperature Sensor Accuracy: ±1.5°C
Type	Range
J	-100 to 760°C ±2°C (-148 to 1400°F ±3°)
K <sup>1</sup>	-100 to 1000°C ±2°C (-148 to 1832°F ±3°)
K <sup>2</sup>	0 to 1370°C ±2°C (32 to 2498°F ±3°)
T	-240 to 400°C ±2°C (-400 to 750°F ±3°)
E	-80 to 400°C ±2°C (-112 to 750°F ±3°)

<b>RTD:</b>	<b>Accuracy:</b> 0.3% of full scale (typical). <b>Resolution:</b> 0.1°C
<b>Internal current source:</b> 1mA	
Type	Range
100 Ohm Pt 385	-100 to 750°C (-148 to 1380°F)
100 Ohm Pt 392	-100 to 750°C (-148 to 1380°F)
	2 or 3 wire.

### Ordering Information



### DataChart DC1250 Specifications (abbreviated)

<b>Input Power:</b>	
<b>Standard:</b>	9 Vdc +/- 0.5Vdc @ 5VA (depends on external loads) provided by external AC wall transformer, non-isolated. 100-240Vac 50/60Hz
<b>Option:</b>	Isolated 12-24 Vdc input power available (not compatible with internal battery pack option below).
<b>Option:</b>	Internal battery pack provides uninterrupted operation and controlled shutdown during blackout. 6Vdc, 2400mAH NIMH Backup Time; 6 HRS. typical (depends on external Load).
<b>Outputs:</b>	2 outputs 5Vdc @ 50mA to power external sensors.
<b>No. of Channels:</b>	2 universal, user selectable.
<b>Isolation:</b>	300V AC/DC channel input to chassis ground
<b>Input Types:</b>	
<b>DC Voltage</b>	
<b>Ranges:</b>	0-250mV; 0-1.25V; 0-2.5V; 0-5V; 0-12.5V; 0-25V
<b>Accuracy:</b>	0.1% of reading
<b>Resolution:</b>	0.025% of full scale
<b>DC Current</b>	
<b>Ranges:</b>	0-20mA; 4-20mA; 0-50mA; 10-50mA
<b>Accuracy:</b>	0.1% of reading excluding 250 ohm external shunt (required).
<b>Resolution:</b>	0.025% of full scale
<b>Frequency Input:</b>	
<b>Range:</b>	0 - 10,000 Hz / 0 - 600,000 RPM
<b>Accuracy:</b>	Freq: ±1 Hz; RPM: ± 1 RPM below 9,999 RPM; ±10 RPM above 9,999RPM
<b>Input:</b>	Low <1.0Vdc; High >3.0 <12.0Vdc
<b>Pulse width:</b>	10 microsecond minimum.
<b>Input Impedance:</b>	>100k ohms
<b>Measure Rate:</b>	Up to 100 samples/sec per channel.
<b>Math Function:</b>	Y = mx + b; average, hi peak, low peak and totalization.
<b>Media:</b>	CompactFlash™ to 2 GB.
<b>Display:</b>	LCD Graphics, 160 x 80 pixels, black FSTN with white LED backlight. User controlled backlight level and contrast adjust.
<b>User Interface:</b>	5 button keypad (dual function buttons).
<b>Clock:</b>	Auto leap year and daylight savings adjustment. Internal battery back-up.
<b>Relay Output:</b>	Two alarm outputs: 30V 0.25A Form A relays
<b>Isolated Input:</b>	One input, 5 to 12Vdc activation @ 10mA typical.
<b>Audible:</b>	Internal beeper (multiple tones).
<b>Dimensions:</b>	Front panel: 96mm x 96mm (1/4 DIN) x 152mm (3.78 x 3.78 x 6 inches).

### 1 Choose Input Power

U	Universal AC Adapter	100-240Vac wall adapter with interchangeable Plug Set
D	DC Input Power	12-24Vdc input power Isolated

### 2 Choose Backup

0	None	
1	Battery Backup*	Rechargeable NiMH battery pack will operate recorder up to 6 hours in the event of power loss.

\*Not Available with Option "D" DC Input Power

### Accessories

Model No.	Description	Model No.	Description	Model No.	Description	CompactFlash™ Memory Cards
Navigator	Windows Compatible Software for graphic analysis, printing transfer and exporting	MAS250R	250 ohm Precision Resistor for current inputs. 0.1% 0.5 watt	THS-W	Temperature/Humidity Probe with 8 foot cable.	MC256MBCF 256 Megabyte
CFCR	CompactFlash™ Card Reader USB 2.0	NIST-1250	N.I.S.T. Calibration with data			MC512MBCF 512 Megabyte
						MC1024MBCF 1 Gigabyte
						MC2048MBCF 2 Gigabyte

*UltraPro AG500 Ultrasonic Meter and Stethoscope*

The **UltraPro AG500** is a powerful ultrasonic leak detector and electronic stethoscope for use in construction, maintenance and manufacturing wherever precision gaseous leak detection or diagnostics are required.

Ultrasound is composed of high-frequency sound waves above the range of human hearing. **UltraPro** uses this technology to sense frequencies ranging from 18 to 42 kilohertz, which are electronically translated down into the audible range. Predictive Maintenance uses airborne/structure-borne ultrasound technology to locate leaks in any gaseous systems and to troubleshoot bearings, injectors, solenoid or valve operations. **UltraPro** features a unique Automatic Gain Control which automatically filters the signal to provide the best signal-to-noise ratio, suppressing background noise and pinpointing leaks. The **UltraPro** circuit simplifies operation, removing complicated adjustment knobs and filter switches. **UltraPro** offers superior electronics with rugged industrial packaging and a protective rubberized case in a simple-to-use ultrasonic meter.

**Features:**

- Automatic Gain Control
- Simple Operation
- 10 Element LED Bargraph Display
- Industrial Rubber Holster
- Air and Contact Probes
- Audio Output (3.5mm headphone jack) with Volume Control
- Earbud headphones included

**Common Applications:**

- Steam Traps
- Vacuum/Air Leaks
- Bearings/Valves
- Pressure Leaks
- Water Leaks

**UltraPro AG500 Ultrasonic Leak Detector****Ordering Information**

**UltraPro AG500 System** Detector, Air and Contact Probes, Headset, Tone Generator, 9v Batteries and Latching Carrying Case.

**UltraPro AG500 Kit** Same as above but without Tone Generator.

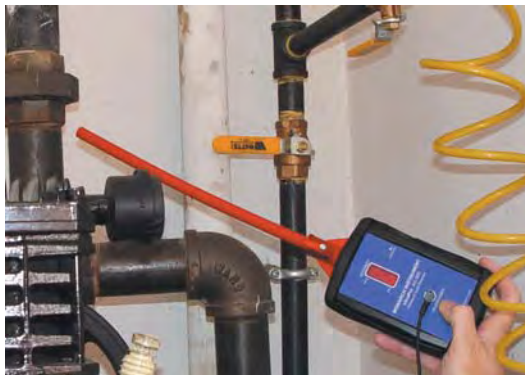
**Tone Generator** Generator and Battery



UltraPro AG500 System includes: Detector, Headset, Air and Contact Probes, Tone Generator, Batteries and Padded Nylon Carry Case.



Monarch Ultrasonic Tone Generator is a battery-powered continuous tone source of 40 kHz. It effectively allows you to "pressurize with noise". It is capable of 155 dB and transmits up to 40 feet. Ideal for enclosed vessels, tanks and buildings. Easily locate seal leakage.

**Locate Pin-Hole Leaks**

Using the air probe you can locate pin-hole leaks up to 10 feet away. Find pressurized or vacuum leaks on all types of gases such as air, freon, nitrogen, propane, etc.

**Listen to Bearings, Gear Boxes and Steam Traps**

Use the contact probe to listen to bearings, gearboxes, valves, steam traps etc. Easily compare noise levels between like objects.

**Water/Air Leaks in Vehicles and Vessels**

Place the tone generator inside a vehicle, closed vessel, container or building and search for leaking seals and gaskets around doors and windows.

## FSI and FSX Series Flexible Fiberscopes

Monarch Flexible Fiberscopes are perfect for inspecting interior areas which are difficult to view. Optical inspection can save thousands of dollars in preventing unnecessary disassembly of complex machines. With the **FSI** or **FSX Fiberscopes**, visual inspection can confirm your diagnosis, ensure proper assembly and welded joints or even locate a dropped component.

**FSI and FSX Features:**

- Superior Resolution 7400 Pixels
- Water/Chemical Resistant
- 40° Field of View
- 10mm and 6mm Diameters Available
- Bending Radius down to 3 inches

- Common Applications:**
- Automotive/Marine
  - Security
  - Manufacturing
  - Construction
  - Maintenance
  - HVAC
  - Electrical
  - Engines
  - Gear Boxes



FSI Flexible Fiberscope



Monarch FSI Series Flexible Fiberscopes are self-illuminating with either LED or Halogen lamps. Both 10mm and 6mm diameters are available in lengths of 24, 36 and 48 inches.

Monarch FSX Series Flexible Fiberscopes require an optional external light source. (Order the Scorpion Xenon flashlight). Only 6mm diameters are available in lengths of 24, 36, 48, 60, 72, 84 and 96 inches.

**Ordering Information**  
 FSI-24-6-H Self-illuminating, 24" length, 6mm diameter, Halogen lamp.  
 FSI-36-6-H Same as above in 36" length.  
 FSI-36-6-L Same as above with LED lamp.  
 FSI-24-10-L Self-illuminating, 24" length, 10mm diameter, LED lamp.  
 FSI-36-10-L Same as above in 36" length.  
 FSI-48-10-L Same as above in 48" length.  
 FSX-24-6 External illumination, 24" length and 6mm diameter.  
 FSX-36-6 Same as above in 36" length.  
 FSX-48-6 Same as above in 48" length.  
 FSX-60-6 Same as above in 60" length.  
 FSX-72-6 Same as above in 72" length.  
 FSX-84-6 Same as above in 84" length.  
 FSX-96-6 same as above in 96" length.  
 Scorpion Halogen Flashlight for FSX series fiberscopes



Monarch FSI and FSX flexible fiberscopes include padded latching carry case with operation manual (optional clip on mirror shown).



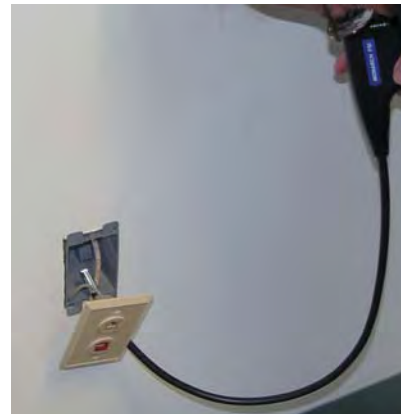
Monarch FSI 10mm Series Flexible Fiberscope shown with powerful bright white LED illumination and optional clip on 45 degree mirror attachment. An optional clip on retrieval magnet is also available.

**Plumbing and Construction**



Inspect drains for blockages and lost items. Inspect behind walls for water or insect damage. Watertight tips eliminate worry of damage.

**Electrical and HVAC**



Inspect electrical wire routing and condition or HVAC ducts for leaks and dust buildup.

**Gas and Diesel Engines**



Inspect pistons, cylinder walls and T-belts. Look inside A/C ducts for mold and mildew buildup. Find oil and water leaks in hidden areas.