



**MONARCH INSTRUMENT**

*Instruction Manual*



**Track-It™ Pressure Logger with Display  
and Current Transmitter**



## Safeguards and Precautions



1. Read and follow all instructions in this manual carefully, and retain this manual for future reference.
2. Do not open the unit in a high humidity environment; it will cause condensation inside the unit.
3. Do not make wiring connections or changes while power is on.
4. Do not operate this device in flammable or explosive atmospheres.
5. This device has no power switch. It will be in operation as soon as power is connected.
6. This unit is designed to operate from 24Vdc; DO NOT under any circumstances connect to AC mains.
7. Do not use this instrument in any manner inconsistent with these operating instructions or under any conditions that exceed the environmental specifications stated.
8. There are no user serviceable parts in this instrument. Refer service to a qualified technician.



**In order to comply with EU Directive 2012/19/EU on Waste Electrical and Electronic Equipment (WEEE):** This product may contain material which could be hazardous to human health and the environment. DO NOT DISPOSE of this product as unsorted municipal waste. This product needs to be RECYCLED in accordance with local regulations, contact your local authorities for more information. This product may be returnable to your distributor for recycling - contact the distributor for details.

Monarch Instrument's Limited Warranty applies.

---

Track-It is a trademark of Monarch Instrument.

Android and Google Play are trademarks of Google, Inc.

The Android robot is reproduced or modified from work created and shared by Google and used according to terms described in the Creative Commons 3.0 Attribution License.

Excel is either a registered trademark or trademark of Microsoft Corporation in the United States and/or other countries.

---

## **TABLE OF CONTENTS:**

<b>1.0</b>	<b>INTRODUCTION.....</b>	<b>1</b>
<b>2.0</b>	<b>GETTING STARTED.....</b>	<b>2</b>
2.1	Install USB Driver and Track-It Software .....	2
2.2	Connect Logger and Start Track-It Software.....	3
2.3	Configure Logger .....	3
<b>3.0</b>	<b>INSTALLATION.....</b>	<b>4</b>
<b>4.0</b>	<b>POWER / TRANSMITTER CONNECTIONS .....</b>	<b>5</b>
<b>5.0</b>	<b>BUTTONS AND MENU.....</b>	<b>7</b>
5.1	Menu Modes .....	7
5.2	Menu Options .....	8
<b>6.0</b>	<b>LCD DISPLAY .....</b>	<b>10</b>
<b>7.0</b>	<b>LED .....</b>	<b>12</b>
<b>8.0</b>	<b>TRACK-IT PC SOFTWARE .....</b>	<b>12</b>
8.1	Preferences .....	13
8.2	Input Setup .....	14
8.3	Output Setup.....	15
8.4	Display Setup .....	16
8.5	Menu Setup.....	17
<b>9.0</b>	<b>TRACK-IT TRANSPORT APP .....</b>	<b>18</b>
<b>10.0</b>	<b>SPECIFICATIONS .....</b>	<b>19</b>
10.1	Measurement.....	19
10.2	General .....	19
10.3	Operating Environment .....	22
10.4	Compliance .....	22
<b>11.0</b>	<b>ACCESSORIES .....</b>	<b>23</b>

## 1.0 INTRODUCTION

The Track-It Pressure Logger with Display and Current Transmitter is a 24V DC powered watertight (IP65) compact data logger with an isolated 4 to 20mA current transmitter output for pressure.

It can be configured to record both Pressure and Temperature up to 130,000 samples or Pressure alone, to maximize data storage space. Real time data, alarms and min/max information can be displayed on the multi-line LCD. The pressure transmitter output current (4-20mA) can be scaled by the user to provide maximum resolution over the desired pressure span. Power and mA out connection is via a 4 pin DIN 43650 IP65 "Solenoid Valve" connector on the rear panel. The unit is easily configured using the free downloadable Track-It PC Software. There is a mini-USB connector on the rear of the unit allowing connection to a PC for programming and data upload. Data upload can also be done with an Android™ device using the Transporter App available on the Google Play™ store.

The logger can be programmed to record data from once every two seconds to once a day. The recording can be initiated by the user to commence immediately, manually via the keypad buttons, at some preset time in the future, or on an alarm condition. Current output does not depend on record-rate or sample-rate; it updates in real time at approximately 8 times per second.

The display can be programmed to display pressure in various engineering units depending on pressure range. It can also display temperature, minimum and maximum values, percentage of memory used, time and date.

The Track-It pressure logger with display has a rugged watertight anodized aluminum and stainless steel housing. The pressure sensor has a standard  $\frac{1}{4}$ "-NPT or  $\frac{1}{2}$ "-NPT fitting.

## 2.0 GETTING STARTED

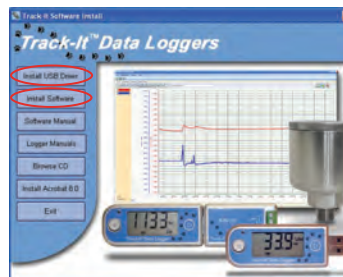
### 2.1 Install USB Driver and Track-It Software

**IMPORTANT: Do NOT plug the Track-It Data Logger into the USB port until AFTER the USB Driver and Track-It Software have been installed.**

Unzip the downloaded file to a local directory on your PC.

Double-click "**CD\_Start.exe**". This will launch the Track-It Data Loggers installation screen shown right:

1. Click "**Install the USB Driver**" and follow the prompts. Click "**Continue Anyway**" if you see the message about software installation.
2. Click "**Install Software**" and follow the instructions to complete the installation. The software is now ready for use.



Logger and Software manuals may also be accessed from the installation screen.

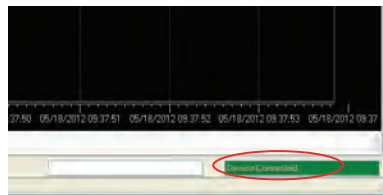
## 2.2 Connect Logger and Start Track-It Software

Plug the Track-It logger into an available USB port on the PC using the supplied cable. If the Found New Hardware Wizard appears, follow the prompts to complete the installation.

Start the Track-It Software by double-clicking the Track-It icon (shown right) on your PC desktop or from the Start menu.

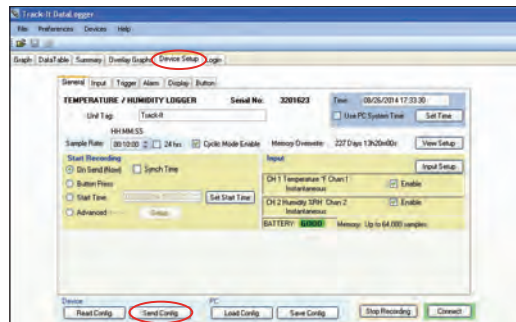


If the USB drivers installed properly you will see “Device Connected” displayed in the lower right hand corner of the Track-It Software window.



## 2.3 Configure Logger

Select the “Device Setup” tab as shown below. The software will automatically retrieve and display the data logger configuration.



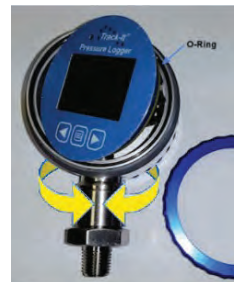
Review default factory configuration settings and make any necessary changes—sample rates, triggers, alarms, etc. Be sure that the time and date is set properly.

Click the **“Send Config”** button under the Device Configuration section of the window. **Your data logger is now operational!**

### 3.0 INSTALLATION

The logger can be ordered with various pressure sensor ranges to cover most applications. Sensors have a  $\frac{1}{4}$ " NPT or  $\frac{1}{2}$ "-NPT thread, dependent on pressure range, that is intended to screw into the pressure source. Make sure to use suitable tape or thread sealant/dope on the threads before inserting the logger into the port. Use an adjustable wrench on the **SENSOR NUT** to tighten the device into the port and test for leaks.

Once installed the dial can be rotated 300 degrees about the sensor to the intended viewing direction. The gauge face can also be rotated  $\pm 90$  degrees by undoing the blue bezel, lifting the front panel and associated electronics and rotating it to the desired position. Ensure the O-ring is in place before replacing the bezel. Do not stress any of the internal wiring.



#### 4.0 POWER / TRANSMITTER CONNECTIONS



The Logger has a 4 pole DIN43650 solenoid valve style connector on the rear panel for power and current out connections.

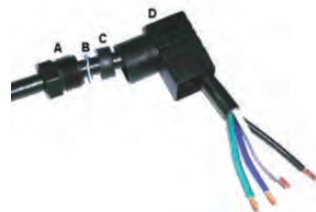
A mating plug (Hirschmann GDS 307) and flat gasket (Hirschmann GDS 307-4) are supplied. The plug is a Form C connector with 3 Poles + Ground, 9.4 mm pin spacing, with a black fiberglass reinforced polyamide housing, and a PG 7 cable entry which accommodates a 4.5 mm to 6 mm (0.177 to 0.236 inch) cable. It has screw termination connections for field installation and is water and dust proof to IP 65 standards when used with the supplied gasket. The cover can be inserted on the inner plug in one of four 90° orientations.




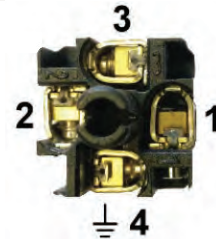
The output is an isolated 4 to 20mA current source with a 12Vdc compliance voltage capable of driving loads up to 600 Ohms with 24Vdc power.



To connect, remove the screw and plug base from the housing. Thread the cable through the PG7 gland (A), metal washer (B) and rubber washer (C). Insert the wires into the plug housing (D) and strip the wire ends ~0.24" (6mm).

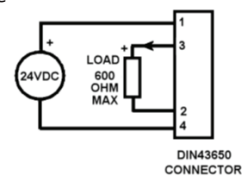


The plug has four compression screw connections. Match pin numbers printed on the connector against numbers displayed in the image right – note that pin 4 is not marked and is the ground pin - .

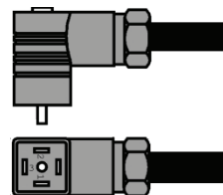


Make a note of the wire colors, insert the stripped ends of the wires into the connections and secure with the screw. The connections are as follows:

- 1) Power +24V DC
- 2) mA isolated output -
- 3) mA isolated output +
- 4) Power 24VDC COM



Once wired, insert the plug into the housing – note the orientation of the plug housing. When connecting the plug to the socket ensure the gasket is between the plug and socket. Tighten the screw.



## 5.0 BUTTONS AND MENU

If the display is off, pressing any button will turn it on for the duration set in the Track-It PC Software.

There are 3 buttons: ◀ (left arrow), MENU  and ▶ (right arrow).


Pressing the ◀ or ▶ buttons will scroll the display through the various display values as set in the Track-It PC Software. This includes Pressure, Temperature, Date/Time, Memory Usage, Max/Min for Pressure and/or Temperature.



### 5.1 Menu Modes

There are two menu modes: the **Regular** menu and the **Admin** menu. What is visible in each menu is a function of how the device is programmed using the PC software. See section [8.5 Menu Setup](#). Some menu items are context sensitive.

The **Regular** menu is accessed by pressing the  MENU button.

The **Admin** menu is accessed by pressing and holding the ◀ (left arrow) button then pressing the  MENU button.

In the menu mode the ◀ button is the escape or exit button, the ▶ button is the accept/change button and the MENU button will move to the next menu item. The display will automatically exit back to the real time display if there is no activity for 10 seconds.

The content of each menu is set up in the Track-It PC Software. In addition, the admin menu can be locked in which case the user at

the logger cannot enter this menu and will receive a LOCK message.  
See section [8.5 Menu Setup](#).

## 5.2 Menu Options

(In alphabetical order – the actual order in which these items appear is dependent on settings in the Track-It PC Software)

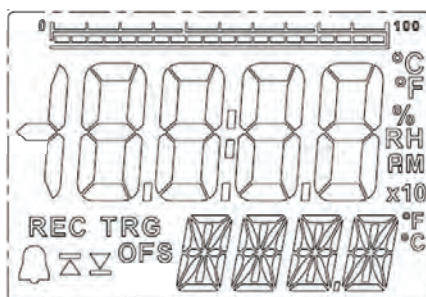
Back Light	<b>BKLT</b> – AUtO/OFF – In Auto Mode the backlight will come on whenever the display is on. Press ► button to toggle auto/off status.
Clear Alarm	<b>Clr ALRM</b> – Will clear any pending Alarm. Press ► button to clear. (Only visible during Alarm.)
Clear Minimum	<b>Clr MIN</b> – Will clear minimum values for Pressure and/or Temperature. Press ► button to clear. It depends on whether Pressure or Temperature is displayed when menu is pressed and if Pressure maximum is selected in the display menu in the Track-It Software.
Clear Maximum	<b>Clr MAX</b> – Same as above for Maximum.
Cycle Mode	<b>CYCL</b> – On/OFF – If on, display will toggle between Pressure and Temperature.
Bar Graph	<b>BAR</b> – On/OFF – Turns the bar graph on or off. Press ► button to toggle on/off status.
Decimal Point	<b>DCPT</b> – AUtO, 0, 1 – Used to set preferred number of decimal places. Auto will use all the

digits and adjust the number of digits after the decimal accordingly.

Engineering Units	<b>Unit</b> – Used to change the engineering units for the pressure display. The lower line will show the current engineering units. Use the ► to scroll through the available units and press ◀ to accept. Not all units are available depending on the full scale value of the sensor. The choice is limited by the number of digits on the display.
Record On/Off	<b>rEC</b> – ON/OFF – Will toggle the record mode of the unit (Only visible if record mode set to “Button Press” in the Track-It PC Software). Press ► button to toggle on/off status.
Zero Mode	<b>ZERO</b> – OFF/EnAb – Will enable the zero offset feature. Available only in the <b>Admin</b> menu. If Off (not enabled) the Zero Set menu item will not display.
Zero Set	<b>ZERO</b> – SEt/OFF – Will set the current Pressure value to zero (offset into relative mode). Press ► button to toggle between modes. SEt will activate relative mode, OFF will set to absolute mode. NOTE: When set, the OFS icon will show on the display. This menu item is only visible if the Zero Mode is <b>enabled</b> in the Admin menu and the Admin menu is NOT Locked.

## 6.0 LCD DISPLAY

The display has 4½ 7-segment digits to show actual values of pressure and temperature. There is also a line of 4 alphanumeric digits used to display ASCII text (e.g. Pressure Units). The display is optionally backlit. If the pressure is greater than 19999, the resolution is set to 10 units and is indicated by the x10 icon. The maximum value displayed is therefore 199990.



There is a bar graph at the top of the display (which can be turned off by the user) giving an analog indication of values relative to 100% which is the full scale value of the sensor. Note that in the pressure offset mode the bar graph indicates the absolute value of the pressure as a function of full scale.

In addition to these values, the display can be scrolled using the ◀ or ▶ buttons and may show (depending on configuration) minimum and maximum values of pressure and temperature, date as day/month (24.07) or month/day (07.24), time in 12 or 24 hour format (12 hour format will be indicated by AM or PM – 08:30 AM), and memory usage as a % of available memory. Values shown are set in the display setup using the Track-It PC Software. See section [8.4 Display Setup](#).

There are various icon indications on the display that indicate the following:

**REC** Indicates the unit is currently recording. This icon will blink at a 2 second rate.

**TRG** Indicates the unit is currently triggered and waiting to record. Record is initiated by time delay, alarm or button depending on configuration.



Indicates an Alarm condition with the following -  
 Indicates High Alarm,  Indicates Low Alarm.



On its own (no Alarm) indicates Maximum value. Visible when scrolling through display if set.



On its own indicates Minimum value. Visible when scrolling through display if set.

**OFS** Indicates the reading has been offset and is relative. (Zero mode active).

**x10**

Indicates the current numerical value displayed must be multiplied by 10.



Bar graph shows percentage of full scale (0 to 100%) of the value indicated. This can indicate Pressure, Temperature or percentage of memory used when recording. Note that in the Pressure offset mode the bar graph will show the percentage of full scale of the absolute value not the offset value currently displayed. The bar can be disabled in the menu.

## 7.0 LED

There is an LED (Light Emitting Diode) above the display to the left. This LED is user programmable using the Track-It PC Software (see section [8.4 Display Setup](#)) and can indicate that the unit is recording (**Green** blink) or an Alarm condition exists (**Red** blink). It will also blink **green** when serial communication is taking place through the USB port.

## 8.0 TRACK-IT PC SOFTWARE

***IMPORTANT: Before using your Track-It Data Logger it needs to be configured. You must first download and install the USB Drivers and PC Software. Please refer to section [2.0 Getting Started](#).***

The free Track-It Software runs on a PC and gives the user complete control in programming the logger and allows for the upload, examination and archiving of data recorded on the logger and setting the current output. The operation of the Track-It Software is described in its own manual which is accessed via the Help - Manual option.

Some of the features of Track-It Software are:

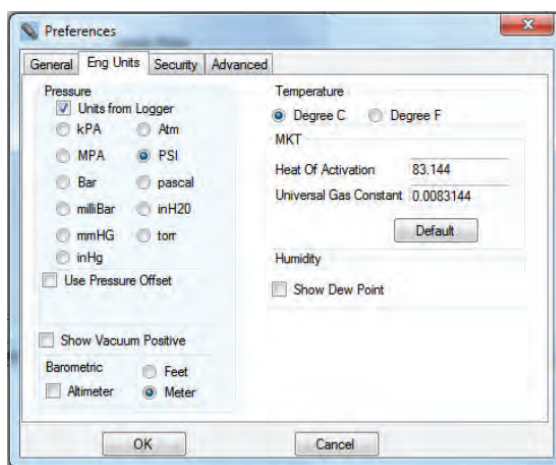
- Delayed recordings, fixed duration recordings by time or number of samples, multiple record times, manual record by button press, record on alarms
- Sample rates from 2 seconds to 24 hours. Instantaneous, average, maximum or minimum values
- Two Alarms, high or low, latched or momentary and record under these alarm conditions
- Display of data graphically, digitally or tabular formats with alarm indication

- Export user selected data in CSV formats for import into Excel®. Filter data to be exported.
- Scale output current to user specified pressure range

There are a number of unique options specifically for this Display Pressure Logger with Current Transmitter which are covered in the following sections.

### 8.1 Preferences

Select “Preferences” then the “Eng Units” tab. You will see the pop-up box shown below.



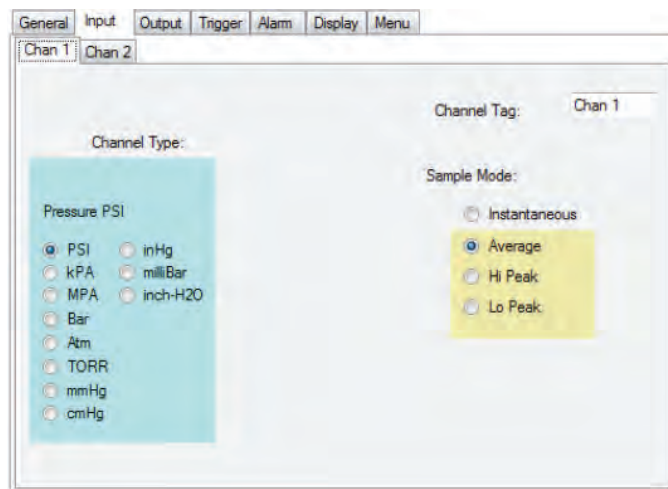
These Engineering Units apply to the data read from the Logger and displayed on the graph or in the data table.



If the “Units from Logger” box is checked - the selection of engineering units here is ignored and the engineering units used will be as set by default in the Logger. If the “Units from Logger” box is unchecked, then the unit selected here will override that set in the Logger.

## 8.2 Input Setup

Under the “Device Setup” tab select the “Input” tab and the “Chan 1” tab.



This setting allows the user to select the default engineering units that will be displayed on the Logger LCD Display. Note that not all engineering units are available; it depends on the full-scale range of

the pressure sensor, as some values will be too large to display on the Logger. Note also that these units may be changed locally at the Logger if the menu is set up to allow this. See section [8.5 Menu Setup](#).

The units selected here will be used when reading data from the Logger unless overridden in the Preferences menu.

The Pressure channel cannot be disabled – the Logger will always record Pressure.

Note that selecting anything other than “Instantaneous” for Sample Mode (the Logger only takes a reading at the Record Rate) will cause the Logger to take readings at the highest sample rate .

The “Chan 2” tab is similar but for the Temperature channel. The Temperature channel can be disabled in which case the Logger will only record Pressure, not Temperature and Pressure.

### 8.3 Output Setup

The current output can be scaled by the user. Under the “Device Setup” tab select the “Output” tab. This will display the setting for the current output of the attached device. The user can set the pressure values corresponding to the 4mA or zero scale and 20mA or full scale

General Input Output Trigger Alarm Display Menu

☒ Default

Current Output:

Full Scale(20mA): 150.00 PSI

Zero Scale(4mA): 0.00 PSI

Read From Device

output. The logger will scale the output linearly to pressure between the two set points.

If “Default” is checked the output will be 4mA at 0 pressure and 20mA at the full scale pressure of the device. The scaling cannot be changed in default mode. The pressure is set and shown in the units selected under the “Input” tab.

The settings from the attached device can be refreshed using the “Read from Device” button if not in default mode.

NOTE: The new settings will not be updated in the device until the user sends a configuration file using the “Send Config” button.

## 8.4 Display Setup

Under the “Device Setup” tab select the “Display” tab.

These settings allow the user to decide what is displayed on the Logger LCD display and defines the function of the LED.

The “Display List” column shows the available functions that are available to be displayed on the Logger. The “LCD Display” column are the functions that will be displayed on the Logger. The user can move the options between the columns by selecting the option (clicking on it) and using the arrow keys. Note that Pressure cannot be moved from the LCD display.

“Decimal Places:” will define how the data is displayed. Auto will always use the maximum number of digits available.

“LCD Time Out:” determines how long the LCD display will be on before blanking.

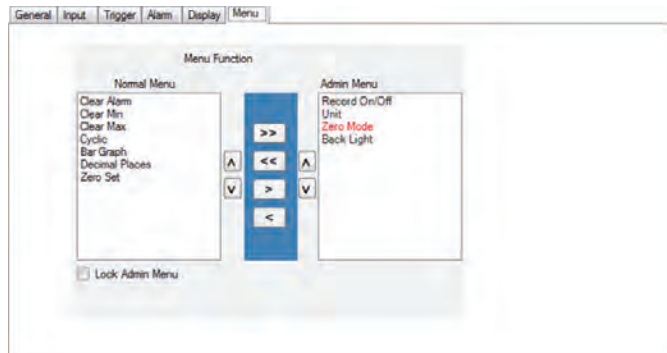
The “Time:” and “Date:” formats can be selected as shown.

The “Display Average” checkbox enables the real-time update to be a rolling average of the last four readings. This will quiet a noisy display but does affect the response of the readout.

## **8.5 Menu Setup**

Under the “Device Setup” tab select the “Menu” tab.

This setting allows the user to determine which menu functions appear in the Normal menu and which appear in the Admin menu. Menu items will appear in the Logger menus in the order of top to bottom in the lists. By highlighting a menu item (clicking on it) the user can manipulate its position using the arrow buttons. The Zero Mode cannot be moved from the Admin menu.



If the “Lock Admin Menu” box is checked the user will not be able to access the Admin Menu features at the Logger, and the Zero Set menu option (display offset) will not be available in the Normal Menu.

## 9.0 TRACK-IT TRANSPORT APP



Track-It Transport is a free Application for Android that allows you to use your device for Android to start and stop recording and transfer data using a USB On-the-Go cable.



Scan for Application  
for Android

## 10.0 SPECIFICATIONS

**Note:** Product specifications are subject to change without notice.

### 10.1 Measurement

<b>Pressure Ranges:</b>	Various pressure ranges absolute and gauge. Check ordering information
<b>Accuracy:</b>	±0.25% Full Scale typical (incl. linearity, repeatability and hysteresis)
<b>Resolution:</b>	0.01%. Display 4½ Digits. Max 2 decimal places.
<b>Compensated Range</b>	-10°C to +70°C typical
<b>Temperature Coeff.</b>	0.02% Full Scale/°C. (> 580 PSI or 4MPa) 0.03% Full Scale/°C. (< 580 PSI or 4MPa)
<b>Overpressure Rating:</b>	1.5 times max
<b>Port connection:</b>	¼" or ½" NPT Male
<b>Sensor Housing &amp; Diaphragm:</b>	Stainless Steel 316L    Fill: Silicon Oil
<b>Temperature Range:</b>	-20 to +85°C / -4 to 185°F Accuracy: ± 5°C Resolution: 0.1°C / 0.2°F

### 10.2 General

<b>Record:</b>	<b>Sample Rates:</b> User configured 1 every 2 seconds up to 1 every 24 hours
	<b>No. of Samples:</b> 130,000 (depends on setup)

<b>Record Trigger:</b>	Two independent triggers. Multiple trigger modes: Instantaneous, button control, on alarm, time and date (start and stop), day of week
<b>Record Mode:</b>	Fill to end of memory or cyclic, number of samples, time duration
<b>Display:</b>	Two line, 4½ digit 7-segment LCD and 5-digit alphanumeric display with custom icons, multi-segment bar graph for 0-100% indication, backlit
<b>Alarms:</b>	2 user programmable alarms. High or Low
<b>Communication:</b>	Mini USB connection
<b>Software:</b>	Track-It Software—Program device, view data (historic or real time), export to spreadsheet
<b>Battery:</b>	Internal rechargeable Li-Ion. Not user serviceable. Allow 24 hours to fully recharge when connected to power.
<b>Enclosure:</b>	Material: Anodized 6061 Aluminum and 316L Stainless Steel
<b>Dimensions:</b>	2.94" (74.6mm) diameter x 1.82" (46.3mm) deep x 4.78" (121.4mm) tall including port threads (see diagram on page 21)
<b>Weight:</b>	0.85 lbs (385.55 grams)
<b>Power:</b>	24Vdc ±10% 1.2W max

**Isolated Current Out:**

Range: 4 to 20mA (Min. 3.6mA, Max. 21.5mA)  
User scalable for pressure.

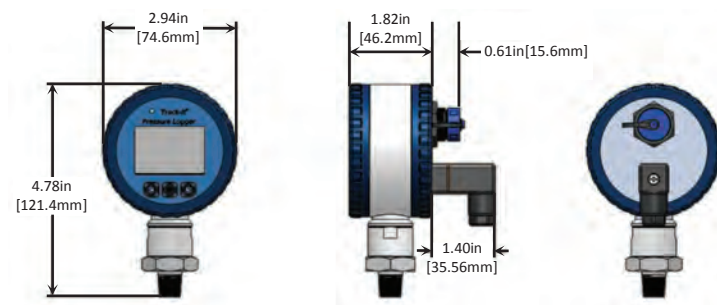
Isolation: 500V to 24Vdc power

Compliance Voltage: 12Vdc @24Vdc supply (Min 11V  
@21.6Vdc supply)

Accuracy:  $\pm 0.06\%$

Resolution:  $6\mu\text{A}$

Update rate: 125 msec typical





### **10.3 Operating Environment**

**Temperature:** -20 °C to +85 °C (-4 °F to 185 °F)

**Humidity:** 100%

**Environmental:** IP65. Note: USB connector cover must be in place.

### **10.4 Compliance**

#### **10.4.1 Battery Compliance**

The Lithium-Ion battery used in this product meets the requirements of **UN DOT 38.3**.

#### **10.4.2 EU Declaration of Conformity**

## **11.0 ACCESSORIES**

<b>O-Rings</b>	Replacement O-Ring Seal, 2-Pack
<b>Garden Hose Adapter</b>	Brass Coupling
<b>USB 2.0 Cable</b>	USB 2.0 to 2.0 mini 6-foot cable
<b>USB On-The-Go Cable</b>	USB Cable for use with Android devices
<b>USB Extension Cable</b>	3-foot USB Extension Cable
<b>Track-It Software</b>	Track-It Software on CD
<b>DIN46350 Mating Plug with Gasket</b>	Hirshmann GDS 307 mating plug and GDS 307-4 gasket for DC Power and Current Out connection
<b>CAL-N.I.S.T</b>	N.I.S.T. Traceable Certificate of Calibration / Recalibration

*Check out our other product lines...*



**Handheld  
Tachometers**



**Panel  
Tachometers**



**Portable  
Stroboscopes**



**Machine Vision  
Stroboscopes**



**Speed Sensors**



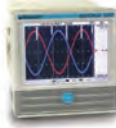
**Temperature/  
Humidity Sensors**



**Vibration Meters**



**Paperless Recorders**



**Track-It™ Data Loggers**

Printed in the U.S.A.

Copyright 2016 Monarch Instrument, all rights reserved

1071-4396-210-1216