

I N S T R U C T I O N S

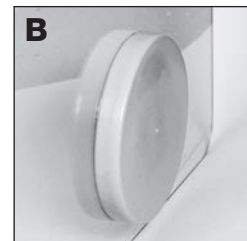
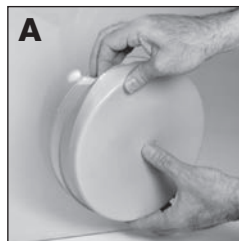


Installing Hand Port Cover

Catalog No. H50025-0008

Applying Cover Over 8" Diameter Port Opening:

- A. Place cover over the outer edge of port.
- B. Work cover over the side of the port, gently stretching sides as necessary, until the entire cover sits flush against the port.



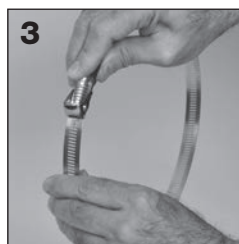
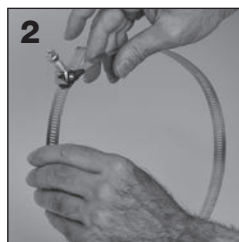
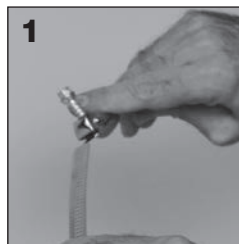
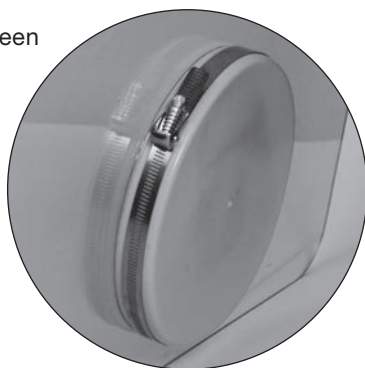
Secure Cover With Band Clamp:

The band clamp is shipped in the fully opened position.

- 1.) Push screw up until it is perpendicular to the band and disengaged from the slots of the clamp.
- 2.) Insert approximately 1 inch of the free end of the slotted band under the screw.
- 3.) Push screw down until it is parallel to the band and engaged with the slots of the band clamp.
- 4.) Place the Band Clamp over the Cover midway along the cylindrical part of the cover.
- 5.) Turn the screw clockwise with a 5/16" nut driver or a flat screw driver to create a snug fit.
- 6.) Tighten firmly until the band cannot move.

CAUTION: Do not overtighten.

NOTE: There should be no space between the band clamp and the cover.



Suggested complementary products:

Description	Catalog No.
Glove box sleeved gloves	H50025-0408, 0409, 0410
Safety goggles	H24873-0000



950025035 - 01/13

Scienceware® is a registered TM of Bel-Art Products.

Bel-Art Products assumes no obligation or liability for any advice furnished by it, or for results obtained with respect to these products. All such advice is given and accepted at the buyer's risk.



1.888.610.7664



www.calcerc.com

sales@calcerc.com