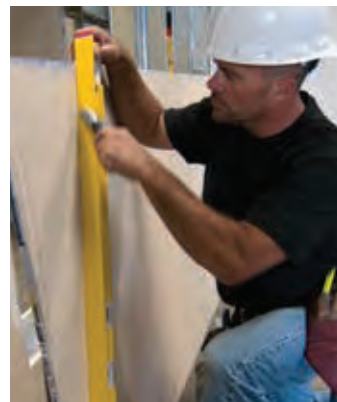


## Type R 300

- STABILA's strongest, twist-resistant R-frame built for the most demanding job sites.
- Extra wide measuring surface for increased stability – no tip overs.
- Three straight edges for marking and cutting.
- Continuous grip over the entire length.
- Bridge over the horizontal vial increases the strength of the frame.
- Easy to clean fender smooth finish.
- Shock absorbing endcaps protect frame when dropped.
- STABILA vial installation technology delivers long-term accuracy.



STABILA 

1.888.610.7664

 [www.calcert.com](http://www.calcert.com)

[sales@calcert.com](mailto:sales@calcert.com)

## Type R 300 - Specifications

### Type

Accuracy - top read

Accuracy - bottom read

Vial type

End caps

Special feature

### Length

48"

72"

96"

### R 300

1/32" @ 72"

1/32" @ 72"

1 x horizontal

2 x vertical

Anti-slip end caps / Shock absorbing / Removable

Strong R-Beam frame

### Part No.

41048

41072

41096

## Application / Additional features



### Extremely durable:

Twist resistant five-chamber "R" frame. Developed for the most demanding jobs.



### Extremely stable:

Extra wide measuring surface. High level of protection from tipping over.



### Precision marking:

3 accurate marking and cutting edges over the full length.



### Continuous grip:

Handrail with finger hold over the full length. Continuous bridge over the horizontal vial.



### Removable end caps:

Allows exact positioning and transferring lines tight into corners.

