

# Detroit Switch, Inc.

## 222 MIL Spec Control Switches

### SERIES 222-20 AND 222-25 HIGH PRESSURE SWITCHES

For further information: See Form 1870—Drawing TS-1903-1

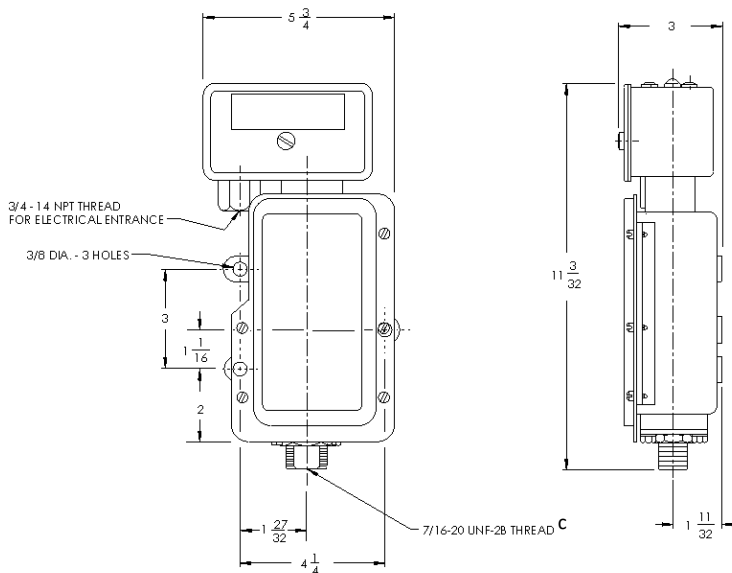
#### STANDARD FEATURES:

- 1) Internal 1 – 1/4 hex nut range adjustment.
- 2) SPST circuitry is standard on model NB14. SPDT is standard on model NB13. SPST circuitry is not available on model NB13.

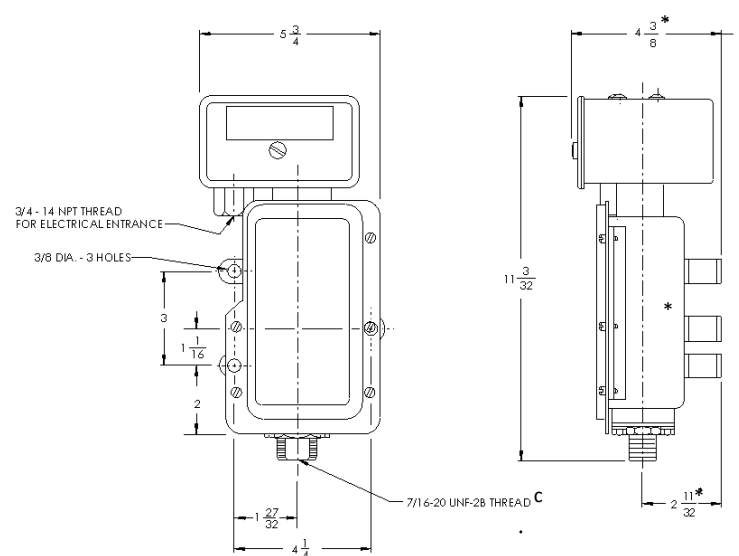
PRESSURE RANGES						
DIFFERENTIALS LISTED ARE FOR STANDARD CIRCUITRY <sup>a</sup>						
MODEL	RANGE (PSIG)	DIFFERENTIAL (PSIG) <sup>b</sup>				MAXIMUM PRESSURE (PSIG)
		MINIMUM		MAXIMUM		
		LOW END	HIGH END	LOW END	HIGH END	
B13	500 - 5000	75	100	220	240	5600
B14	250 - 3000	40	60	80	90	5600

- a) A differential is the difference between the opening and closing (make/break) points of the switch contacts.
- b) Wider differentials are available on application.
- c) 1/4" NPT female and other pressure connections and wetted materials are available on application.
- d) Specials may change power element size.
- e) Pin electrical connectors are available on application.

Note: All dimensions are for roughing in typical controls and are approximate



**Series 222-20**



\*May be wider for other circuitry

**Series 222-25**

For vital applications (≤ 10 milliseconds of contact bounce).