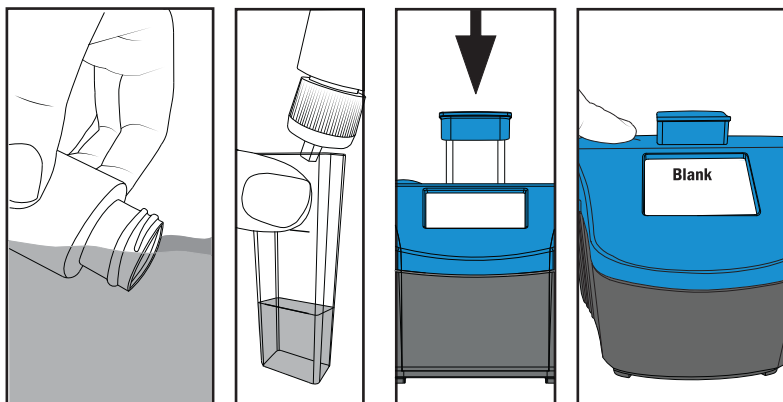


BLANK (CALIBRATION)

1 Blank



1. Fill sample bottle (0689) with water sample. Replace cap.
2. Fill clean tube (0205) to the 5 mL line with water sample. Cap tube with **blue** cap.
3. Insert tube into the ColorQ 2x.
4. Press button to turn meter on . When "Blank" appears press button to "Blank" the meter, and go to Free Chlorine (FCL).

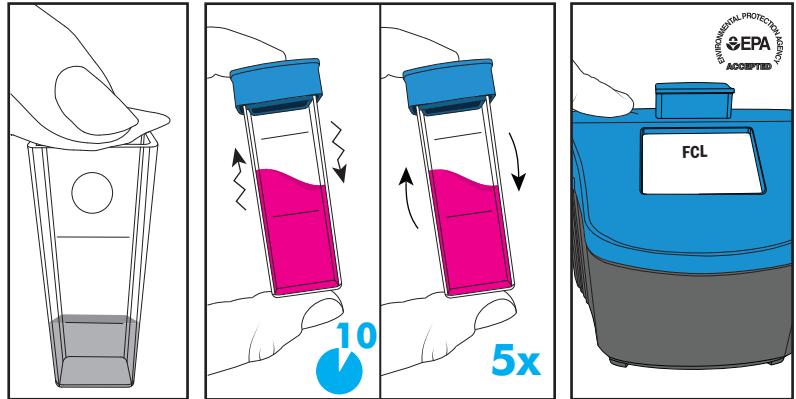
WARNING! This set contains chemicals that may be harmful if misused. Read cautions on individual containers carefully
Not to be used by children except under adult supervision.

FREE CHLORINE

ColorQ 2x Range
0-10 ppm Chlorine

2 FCL

DPD 1 IG 6903A-J/6903A-CN-J



1. Add 1 **DPD 1 IG** Tablet to same tube.
2. Cap tube with **blue** cap. Shake for 10 seconds. Invert slowly 5 times to mix.
3. Insert tube into the ColorQ 2x.
4. Press button to read "FCL" Free Chlorine.
5. Press button to go to "TCL" Total Chlorine. Remove tube.



*Reagent is a potential health hazard.

READ SDS: lamotte.com **Emergency information:**

Chem-Tel USA 1-800-255-3924 Int'l, call collect, 813-248-0585

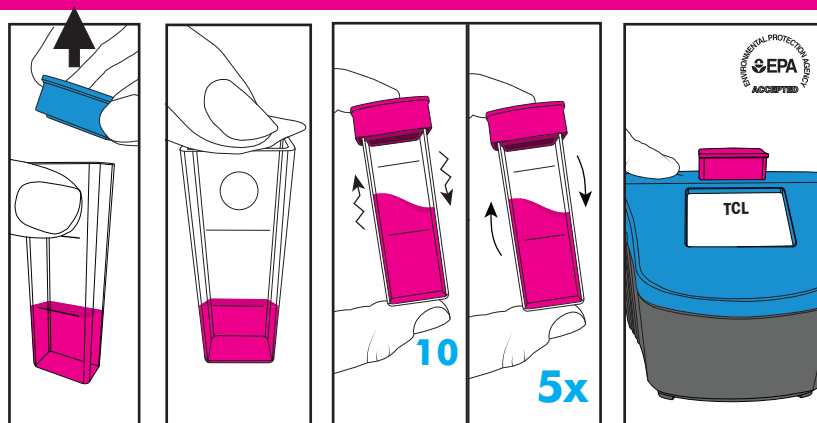


TOTAL CHLORINE

ColorQ 2x Range
0-10 ppm Chlorine

③ TCL

DPD 3 IG 6197A-J/6197A-CN-J



1. Remove cap from reacted FCL tube.
2. Add 1 **DPD 3 IG** Tablet to the same tube.
3. Cap tube with **pink** cap. Shake for 10 seconds. Invert slowly 5 times.
4. Insert tube into the ColorQ 2x.
5. Press button to read "TCL" Total Chlorine.
6. Press button to return to "Blank" or hold button until ϕ is displayed. Remove tube.

0 - 8 ppm FCL and TCL results EPA Accepted. See www.lamotte.com for details.

INTERFERENCES: bromine, chlorine dioxide, iodine, oxidized manganese and chromium, and ozone.

Color 2x[®] Low Range Chlorine

Order Code 2102

- Read the instructions before testing.
- Press button to turn meter ON and OFF ☺
- Quickly press button twice to skip a test.
- Cap the tubes securely to prevent leaks.
- Do not interchange color-coded caps.
- Dry the tubes before placing them in the chamber.
- Rinse tablet crusher after each use. Brush and rinse tubes, caps and tablet crusher after testing.
- Allow the tubes to dry before returning them to the case.
- The tube specified in the test procedure must be used.
- Use only LaMotte reagents. Cap securely.
- If unit should auto-off during testing, rinse and fill a tube. Repeat Blank and return to testing.
- ☼ = Cap tube to eliminate stray light.



62102 09.27.2023

