

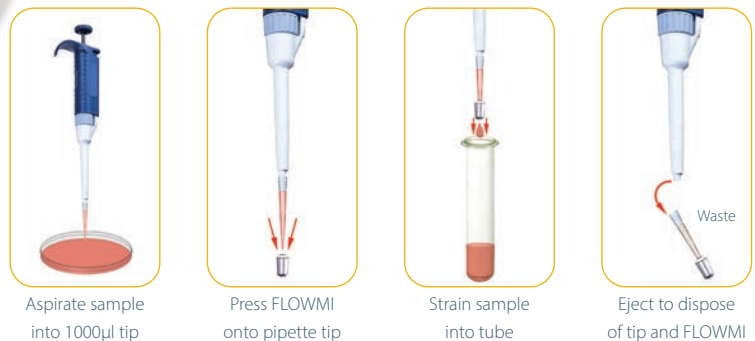
## Flowmi™ Cell Strainers for 1000 Microliter Pipette Tips



### Preserve Small Volume Samples and Avoid FLOW and FACS\* Clogs

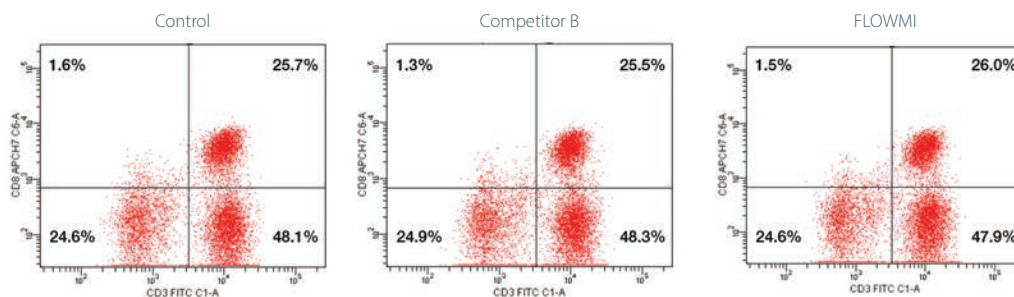
- Fast and efficient filtering of small volume samples (up to 1000µl) prior to FLOW or FACS\* analysis; decreases potential for clogging
- Preserves sample volume, removes cell aggregates and creates uniform single cell suspensions
- Fits most 1000µl tips including Fisherbrand Sure-One, VWR brand, Axygen, Nichiryo and Eppendorf and more
- Sterile, 40µm or 70µm porosity

### Flowmi – Smart. Effective. Innovative.



### FLOWMI™ Delivers Results You Can Count On

Cytograms of CD-Chex™ Plus cells from left to right – Control (non-filtered); Sample filtered using Competitor; and Sample filtered using FLOWMI. Cytograms and “Percent of Parent” data demonstrate no loss of specific cell types using FLOWMI vs. competing filter.



⚠ See page 49

| Catalog No. | Porosity  | Quantity / Pack |
|-------------|-----------|-----------------|
| H13680-0040 | 40 Micron | 50              |
| H13680-0070 | 70 Micron | 50              |

Recommended for use with samples having a maximum concentration of 2 million cells/ml (40µm) or 4 million cells/ml (70µm).